

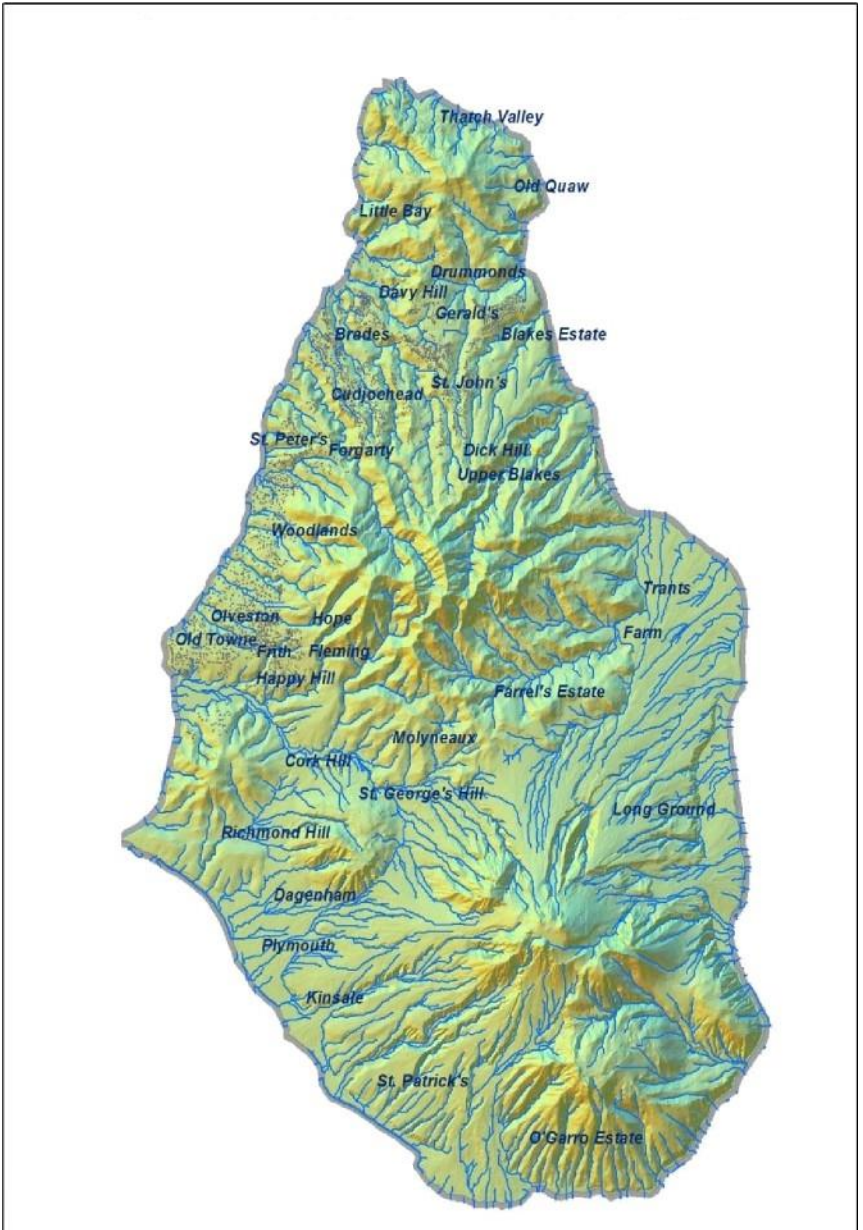


Montserrat at a Glance

2023 Population & Housing Census Quick Facts



Map 1: Map of Montserrat



Source: GIS System, Physical Planning Unit, MALHE

Acknowledgments

The Statistics Department, Montserrat (SDM), sincerely thanks everyone who played a role in the success of the 2023 Population and Housing Census (PHC).

We are especially grateful to those who participated in the Census and those who supported our public awareness campaign - your contributions were truly invaluable.

Our sincere thanks to our parent ministry, the Ministry of Finance & Economic Management, as well as Radio Montserrat ZJB, the Geographical Information System Unit (GIS), Department of Information Technology and E-Government Services (DITES), and the Government Information Unit (GIU) for their vital support throughout this important undertaking.

Special acknowledgment is extended to the staff of the Statistics Department, and our PHC staff, including the census management team, enumerators, supervisors, data coders, and headquarters staff, for their tireless dedication and hard work during and after the field collection.

We are also profoundly grateful to Caribbean Community (CARICOM) and to the National Statistical Offices of Grenada, Antigua & Barbuda and St. Kitts & Nevis for their unwavering support.

About Statistics Department Montserrat (SDM)

The Statistics Department of Montserrat is the sole Government agency responsible for compiling, analyzing and disseminating economic, social and demographic statistics about Montserrat.

Copyright Notice

Users may apply or process this data, provided that the Statistics Department Montserrat is acknowledged as the original source of the data.

The data will also be made available on the Government of Montserrat's website at <https://www.gov.ms/government/ministries/ministry-of-finance-economic-management/statistics-department/> and SDM's website at <https://statistics.gov.ms/publications/>.

Contact Information

For further information, suggestions and comments, please contact:

Statistics Department
Ministry of Finance & Economic Management
Government of Montserrat
P O Box 292
Brades
Montserrat

Tel: (664) 491-3797/94 or 495-3797

Fax: (664) 491-4632

Email: statistics@gov.ms

Contents

Acknowledgments	iii
About Statistics Department Montserrat (SDM)	iv
Copyright Notice	iv
Contact Information	iv
Introduction	1
Technical Notes	3
Definition of Terms used in this Publication	5
Topics included in the 2023 Population & Housing Census	28

List of Tables

Table 1: Usual Resident Population by Five-Year Age Group and Sex 2023	7
Table 2: Enumerated Population by Enumeration District and Sex – 2023	9
Table 3: Private Households by Enumeration District – 2023	16
Table 4: Ownership of Private Dwellings – 2023	17
Table 5: Population by Major Country of Birth by Sex – 2023	18
Table 6: Emigration by Year and Sex between May 2011 and September 2023	20
Table 7: Literacy Status of Enumerated Population 10 years and older by Ten-Year Age Group – 2023	22
Table 8: Highest Level of Education Reached: Enumerated Population 15 Years and Over by Ten-Year Age Group – 2023	23
Table 9: Self-Reported Cases of Diabetes – Enumerated Population by Age Group and Sex – 2023	24
Table 10: Self-Reported Cases of Hypertension – Enumerated Population by Age Group and Sex – 2023	24
Table 11: Marital Status: Enumerated Population 16 Years and Over –2023	25

List of Figures

Figure 1: Population Pyramid Showing Usual Resident Population - 2023	8
Figure 2: Percentage Change in Population of Enumeration District - 2011 and 2023 Censuses.....	10
Figure 3: Population Trends: 1970 – 2023.....	11
Figure 4: Geographic Distribution of Population: 2001 – 2023.....	11
Figure 5: Population by Major Religious Denominations: 1991 – 2023	12
Figure 6: Toilet Facilities: 1991 – 2023	12
Figure 7: Usual Resident Population by Ethnicity – September 2023.....	19

List of Maps

Map 1: Map of Montserrat	2
Map 2: Map of Montserrat Showing Enumerated Population by Region and Sex – 2023.....	13
Map 3: Map of Montserrat Showing Enumerated Population by Enumeration District – 2023	14
Map 4: Map Showing Distribution of Montserradians Across Enumeration Districts - 2023.....	26
Map 5: Map Showing Distribution of Non-Montserradians Across Enumeration Districts - 2023	27

List of Infographics

Infographic 1: 2023 Population and Housing Census Household Characteristics.....	15
Infographic 2: Countries/Territories of Migration 2011 - 2023.....	21

Introduction

The first recorded census of Montserrat was commissioned by Sir William Stapleton, a former governor of Montserrat and later the governor of the Leeward Islands. Regular censuses began in 1871 when the British Empire initiated systematic population counts. On Montserrat, Population and Housing Censuses are conducted every ten years, with the last census occurring in 2011. The 2023 Population and Housing Census, initially scheduled for 2021, was postponed due to the COVID-19 pandemic.

Between September 2023 and January 2024, the Statistics Department of Montserrat carried out the field collection phase of the 2023 Census. Under careful supervision, enumerators and supervisors collected data on housing stock and individuals residing in private households. Additionally, the Statistics Department team gathered information on institutional and non-private dwelling populations, including persons in hospitals, care homes, prisons, and guesthouses. All data collected corresponded to the reference day, September 12, 2023, designated as Census Day.

Census interviews were conducted using electronic questionnaires on tablets, employing a Computer-Assisted Personal Interview (CAPI) methodology, a transition from paper-based questionnaires used during previous population and housing censuses. This system integrated Geographic Information System (GIS) technology, enabling the collection of geo-coded data alongside operational details, such as interview dates and times, to facilitate real-time monitoring of data collection. Each enumerator was provided with a tablet and assigned a specific enumeration area, ensuring that all records were accurately tagged by location.

The dataset was meticulously cleaned and prepared for analysis under the guidance of Ms. Cal Ghee, a Census Consultant from the Office of National Statistics (United Kingdom).

In previous censuses, both de facto (individuals present on the island on census day) and de jure (usual residents) population counts were published. However, the 2023 Census primarily focused on the usual resident population. While data was collected that allows for the calculation of a de facto count, only the de jure population will be reported. The usual resident population includes individuals present on the island (for the last six months leading up to the census), those temporarily away, or those intending to reside in Montserrat for six months or more.

This approach provides a more accurate representation of Montserrat's resident population for planning and decision-making.

This publication includes two population figures: the total population, comprising all individuals, and the enumerated/household population, which reflects those living in private dwellings where census questionnaires were completed.

Notably, this is the first detailed publication derived from the 2023 Census, as previous releases of census data were limited to infographics shared with the public. The information is presented through tables, graphs, infographics, and digitized maps, showcasing a subset of the census results.

Technical Notes

The primary goal of conducting a census is to collect comprehensive and accurate data about the population and housing stock within a specific geographic area. The information gathered serves as a foundation for effective planning, policymaking, resource allocation, and program development by governments, businesses, and organizations. It is also essential for monitoring social and economic progress, evaluating public services, and meeting national and international reporting obligations.

Census exercises often face challenges with data collection, requiring adaptive strategies to ensure accuracy and coverage. During the census, overlooked dwellings were addressed by providing enumerators with tablets with built-in maps, and logs that ensured that every household was captured. Ahead of the field collection phase, supervisors and enumerators determined the precise boundaries of each enumeration area within allocated districts for surveying. Hard-to-reach individuals, due to irregular schedules or mobility, were contacted through multiple attempts at varying times. If no household member was available, revisits were conducted up to three times before involving supervisors. For households refusing to participate, supervisors employed strategies to address concerns and encourage cooperation. Despite these challenges, the 2023 Census results were not significantly affected by non-participation, the Statistics Department achieved a 98.6% response rate.

To prepare enumerators and supervisors for the field, comprehensive training sessions were conducted to standardize the data collection approach. Enumerators were trained to ensure accuracy in responses, employing probing techniques to clarify answers without causing frustration to respondents. When proxy responses were provided - where one household member answered on behalf of another - enumerators were instructed to record responses as accurately as possible, accepting "Don't Know" as a final option when necessary. The training emphasized professionalism, patience, and respect, fostering trust and encouraging respondent cooperation. Supervisors were trained to ensure full coverage and quality assurance throughout the census.

The adoption of Computer-Assisted Personal Interviewing (CAPI) technology streamlined the data collection process, enhancing efficiency and accuracy. Supervisors and the Census Management Team leveraged CAPI to monitor data collection in real time, ensuring timely interventions and thorough coverage. This system allowed for a comprehensive review process, where supervisors checked

enumerator submissions to ensure completeness and accuracy. The supervisor-to-enumerator ratio, maintained at approximately 1:6, provided effective oversight and guidance throughout the collection phase.

The Information Technology (IT) team was instrumental in addressing technical challenges providing real-time troubleshooting support, resolving issues related to tablet performance and software glitches. The team along with the GIS Unit, Mrs. Lavern Rogers-Ryan ensured the smooth functioning of geospatial tools, which enabled precise mapping and monitoring of enumeration areas. This support was critical in confirming complete coverage and verifying enumerators' adherence to assigned areas.

Following the data collection phase, a rigorous data cleaning and editing process was undertaken to ensure the reliability and consistency of the data. Errors, inconsistencies, and gaps were addressed systematically, and the final dataset was prepared using SPSS software under the guidance of Census Consultant Mr. Edwin St. Catherine of Data Point Solutions Inc. (St. Lucia). The cleaned dataset served as a robust foundation for detailed analysis, enabling the production of accurate statistics to inform decision-making and policy formulation.

Data Confidentiality:

The information within the census database enables the creation of detailed tables for enumeration areas, villages, and their respective units. Ensuring the privacy of individuals is of utmost importance and is a key factor in designing data collection and processing systems. Consequently, microdata - such as names, local addresses, or any unique identifiers that could reveal the identity of respondents - are neither disseminated nor shared. To uphold confidentiality, all data presented in this or any other publication from the Statistics Department are aggregated.

Definition of Terms used in this Publication

General descriptions of terms and concepts used in this publication are provided below. Footnotes to the tables and commentaries are provided where applicable.

Citizenship: A citizen is a legal national of a country, which may be acquired by birth or through naturalization or registration. The naturalization for adults or the registration process for children must be complete in order for the person to be considered a citizen.

Dwelling: A dwelling is any building where people live either privately (private dwelling) or collectively (non-private dwelling). A dwelling must have direct access from the street or common landing, staircase, passage or gallery where occupants can enter or leave without passing through anybody else's living quarters.

Emigration: Departure from a place of abode, natural home, or country for life or residence elsewhere.

Enumeration Districts: These are geographical areas established by the Statistics Department for data collection and reporting purposes.

Enumerated / Household Population: Individuals residing in private households who were directly administered the full census questionnaire, providing complete information during the data collection process.

Ethnicity: Ethnicity refers to people sharing a common history and distinctive cultural characteristics. A person's ethnic group refers to the customs and culture of the particular group.

Marital Status: Marital status indicates the legal status of a relationship - whether single, married widowed, etc.

Private Household: One or more persons living together, that is, sleeping most nights of the week and sharing at least one daily meal in a private dwelling, is known as a private household.

Rent-free: No member of the household pays rent for the occupancy of the dwelling. The dwelling may be owned by relatives or even friends who are not members of the household and who have consented to this arrangement. Other rent-free arrangements include where the Government, a business or some other institution provides free living quarters to its employees.

Usual Place of Residence: This is the place of residence where the respondent would name in reply to the question 'Where do you live?' For persons with more than one home, usual residence is the one at which the person spends the greater part of the year. Where a person recently moves into a household or dwelling, as long as he or she intends to make his or her home at that place, that person is considered a usual resident.

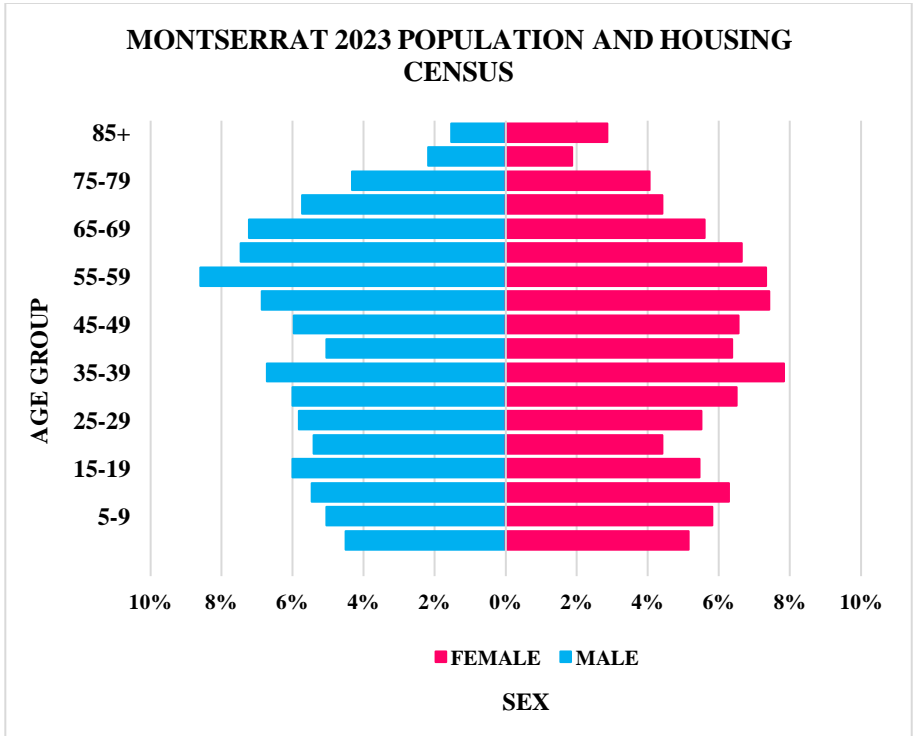
Usual Resident Population: This includes all individuals whose usual place of residence is Montserrat, encompassing those living in private households, non-private dwellings, and institutional facilities

Table 1: Usual Resident Population by Five-Year Age Group and Sex 2023

Age Group	Sex		Total
	Male	Female	
0-4	99	113	212
5-9	111	128	239
10-14	120	138	258
15-19	132	120	252
20-24	119	97	216
25-29	128	121	249
30-34	132	143	275
35-39	148	172	320
40-44	111	140	251
45-49	131	144	275
50-54	151	163	314
55-59	189	161	350
60-64	164	146	310
65-69	159	123	282
70-74	126	97	223
75-79	95	89	184
80-84	48	41	89
85+	34	63	97
Total	2,197	2,199	4,396

Source: Statistics Department, MONTSERRAT

Figure 1: Population Pyramid Showing Usual Resident Population - 2023



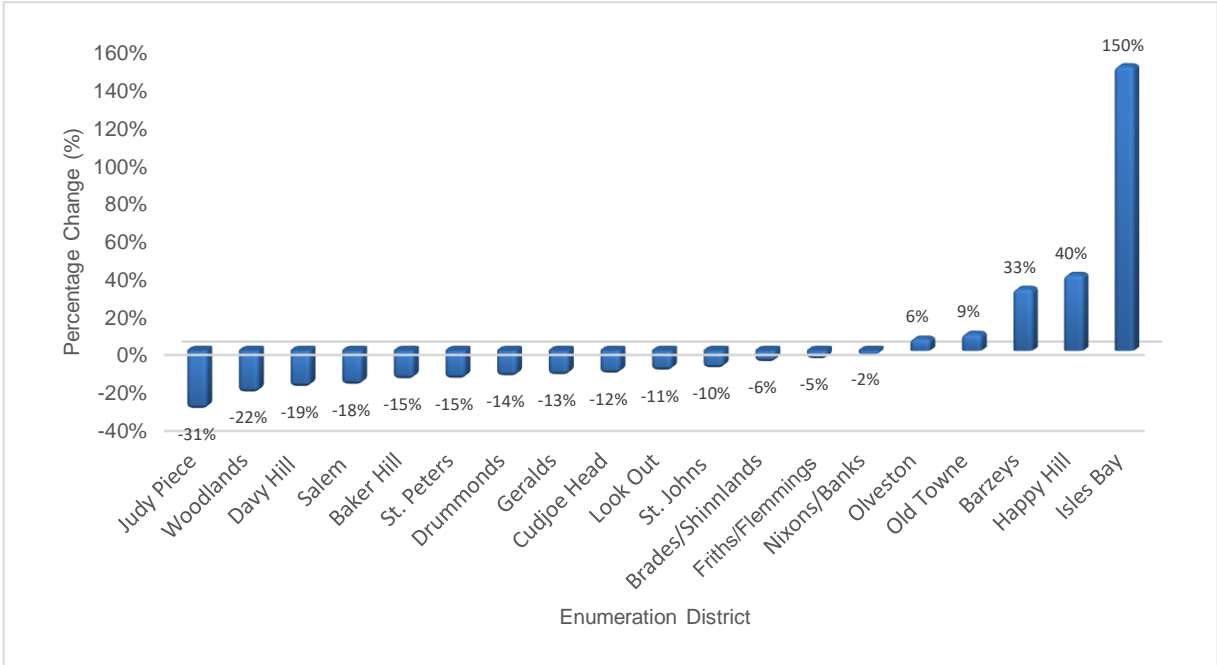
Source: Statistics Department, MONTSERRAT

Table 2: Enumerated Population by Enumeration District and Sex – 2023

Enumeration District	Sex		Total
	Male	Female	
Isles Bay	9	6	15
Happy Hill	11	10	21
Friths/Flemmings	84	75	159
Salem	146	131	277
Old Towne	30	31	61
Oveston	154	146	300
Woodlands	90	118	208
St. Peters	187	187	374
Cudjoe Head	56	64	120
Nixons/Banks	58	70	128
Brades/Shinnlands	185	198	383
Baker Hill	94	104	198
Barzeys	95	100	195
Davy Hill	206	216	422
St. Johns/Mongo Hill	201	194	395
Gerals	54	64	118
Judy Piece	83	83	166
Look Out	305	295	600
Drummonds	61	64	125
Total	2,109	2,156	4,265

Source: Statistics Department, MONTSEERRAT

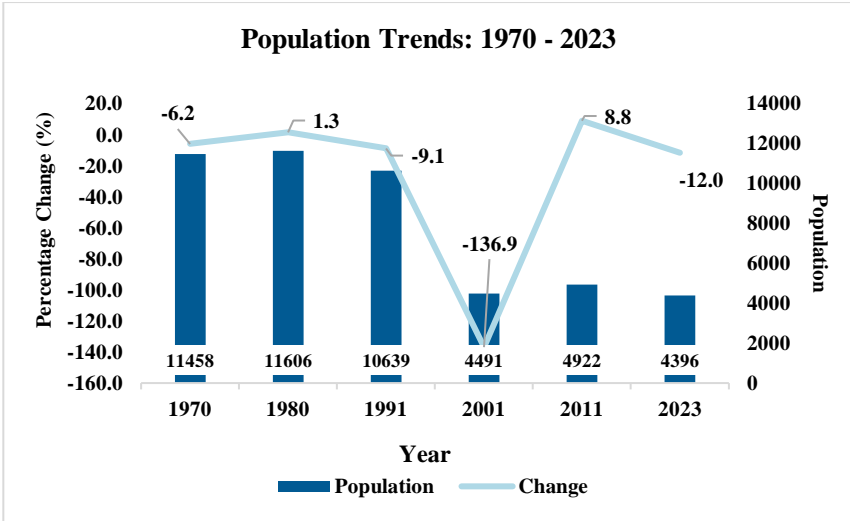
Figure 2: Percentage Change in Population of Enumeration District - 2011 and 2023 Censuses



Source: Statistics Department, MONTERRAT

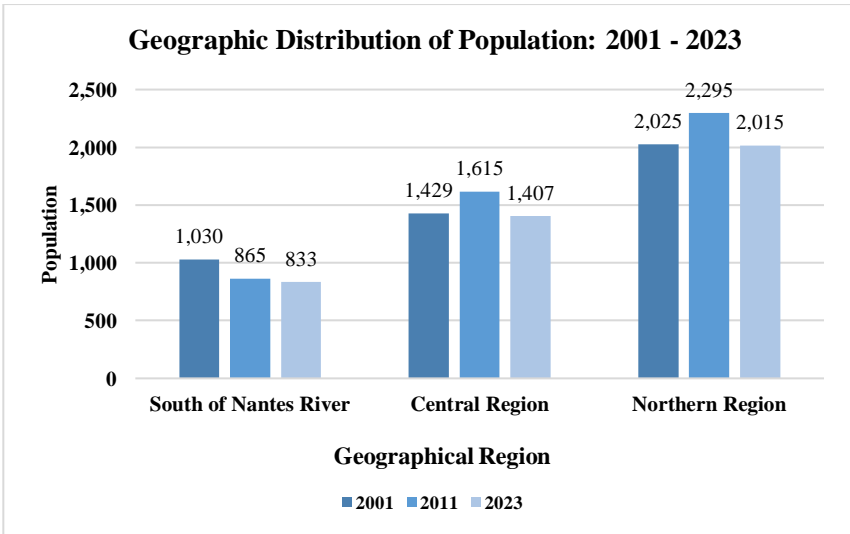
Census Trends

Figure 3: Population Trends: 1970 – 2023



Source: Statistics Department, MONTSERRAT

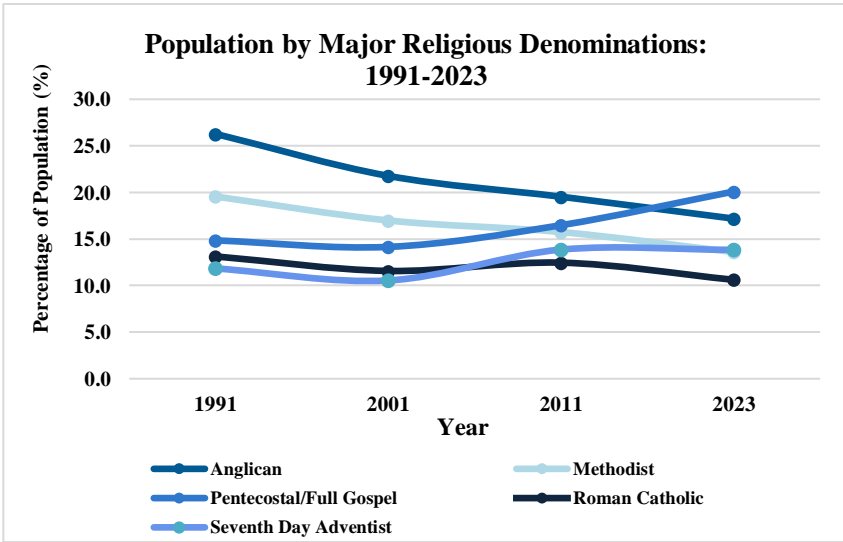
Figure 4: Geographic Distribution of Population: 2001 – 2023



Source: Statistics Department, MONTSERRAT

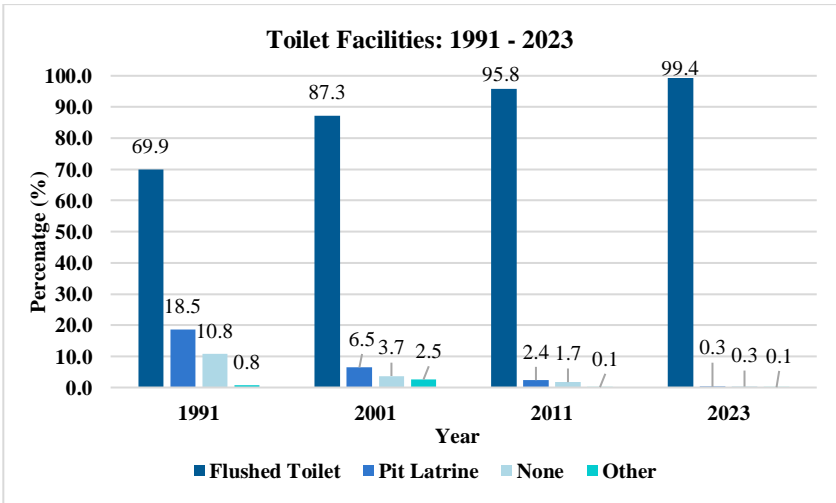
Census Trends

Figure 5: Population by Major Religious Denominations: 1991 – 2023



Source: Statistics Department, MONTSERRAT

Figure 6: Toilet Facilities: 1991 – 2023



Source: Statistics Department, MONTSERRAT

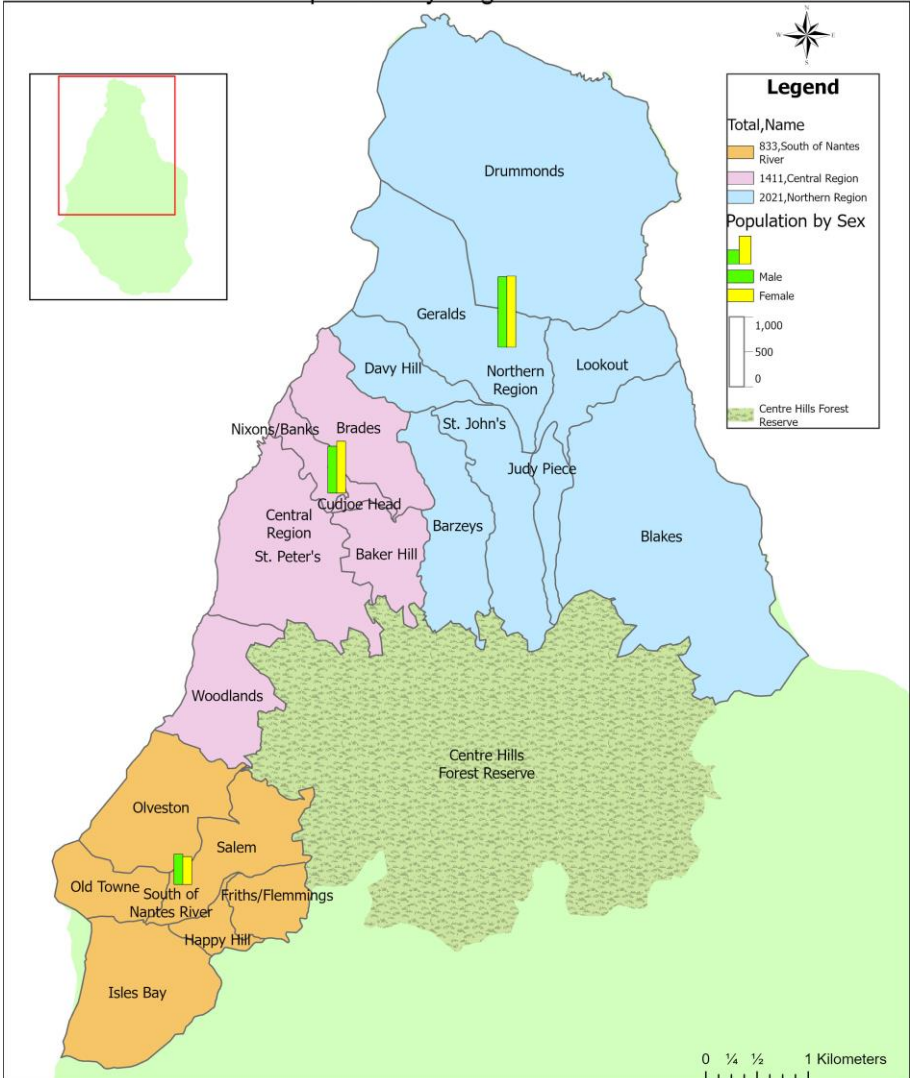
Map 2: Map of Montserrat Showing Enumerated Population by Region and Sex – 2023



MONTSERRAT POPULATION AND HOUSING CENSUS 2023



Population by Region and Sex



Data Source: Statistics Department, Montserrat
 Map Produced by: GIS Centre, MALHE (17/12/24)

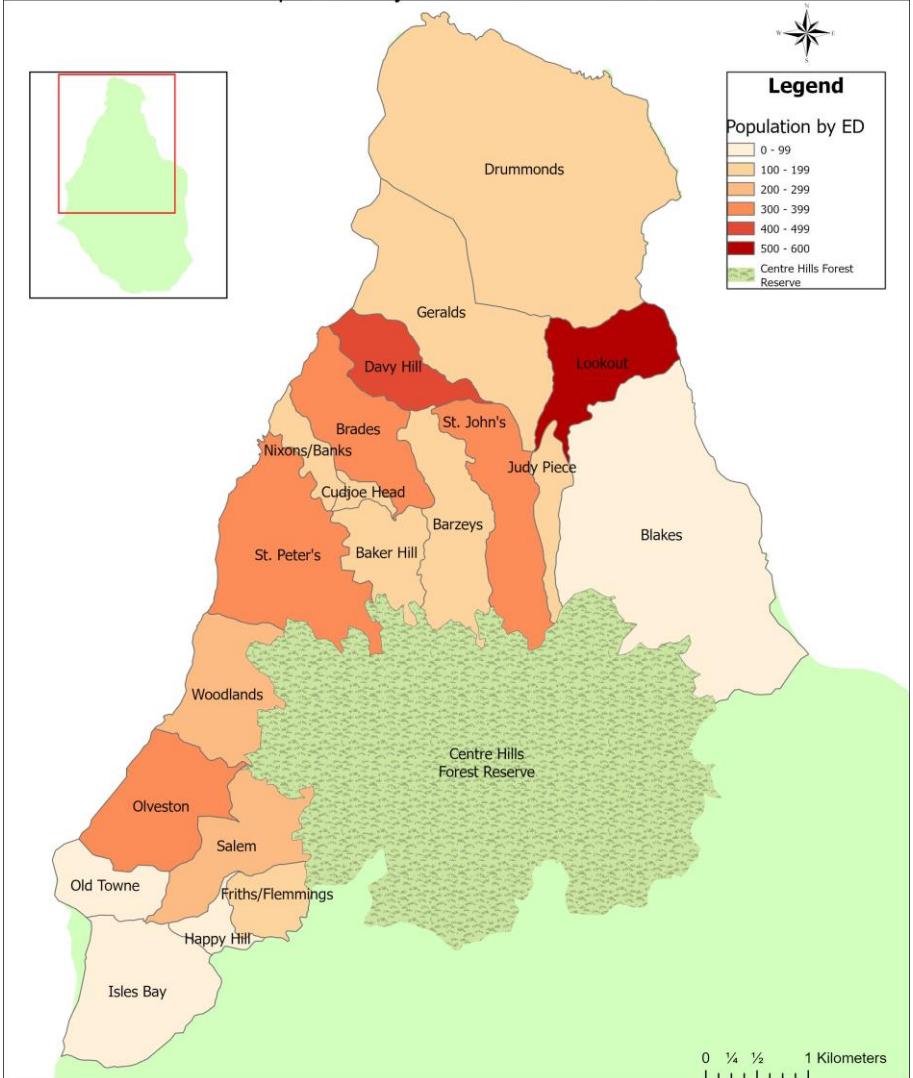
Map 3: Map of Montserrat Showing Enumerated Population by Enumeration District – 2023



MONTERRAT POPULATION AND HOUSING CENSUS 2023



Population by Enumeration Districts



Data Source: Statistics Department, Montserrat
 Map Produced by: GIS Centre, MALHE (17/12/24)

Infographic 1: 2023 Population and Housing Census Household Characteristics



2023 POPULATION AND HOUSING CENSUS HOUSEHOLD CHARACTERISTICS

HOUSEHOLDS



OWNERSHIP OF ASSETS



67.1%
OF HOUSEHOLDS OWN A MOTOR VEHICLE



66.0%
OF HOUSEHOLDS OWN A RADIO OR STEREO



98.4%
OF HOUSEHOLDS OWN A GAS OR ELECTRIC STOVE



8.3%
OF HOUSEHOLDS OWN AIR CONDITIONING

UTILITIES AND SANITATION



Access to Water
99.5%
OF HOUSEHOLDS HAVE WATER PIPED INTO DWELLING



Toilet Facilities
99.4%
OF HOUSEHOLDS HAVE A FLUSHED TOILET

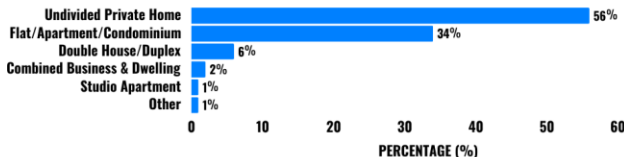


Electricity
99.2%
OF HOUSEHOLDS USE PUBLIC ELECTRICITY



Bathing Facilities
99.1%
OF HOUSEHOLDS HAVE INDOOR BATHING FACILITIES

OCCUPATION OF DWELLING BY TYPE



32.2%
OF HOUSEHOLDS ENGAGE IN CROP PRODUCTION



COMMUNICATION TECHNOLOGY



83.3%
OF HOUSEHOLDS HAVE INTERNET ACCESS



29.3%
OF HOUSEHOLDS HAVE ACCESS TO A FIXED LINE TELEPHONE



78.0%
OF HOUSEHOLDS HAVE ACCESS TO TELEVISION



website: www.statistics.gov.ms
email: statistics@gov.ms
instagram: [statistics_mni](https://www.instagram.com/statistics_mni)
facebook: [statisticsdepartmentmontserrat](https://www.facebook.com/statisticsdepartmentmontserrat)

Statistics Department Montserrat
"Better data, Better lives"

Table 3: Private Households by Enumeration District – 2023

Enumeration District	No. of Private Households
Isles Bay	9
Happy Hill	9
Friths/Flemmings	71
Salem	143
Old Towne	39
Olveston	166
Woodlands	107
St. Peter's	194
Cudjoe Head	59
Nixons/Banks	64
Brades/Shinnlands	199
Baker Hill	104
Barzeys	99
Davy Hill	217
St. Johns/Mongo Hill	204
Geralds	58
Judy Piece	84
Look Out	360
Drummonds	76
Total	2,262
<i>Enumerated Population</i>	4,265
<i>Average Household Size</i>	1.9

Source: Statistics Department, MONTSERRAT

Table 4: Ownership of Private Dwellings – 2023

Type of Ownership	Private Households	
	No.	Percent (%)
Owned:		
Outright	838	37.2
With mortgage	406	18.0
Rented:		
Private	680	30.1
Government	102	4.6
Leased	19	0.9
Rent Free	187	8.3
Other	12	0.5
Don't Know	3	0.1
Not Stated	5	0.3
Total	2,252	100

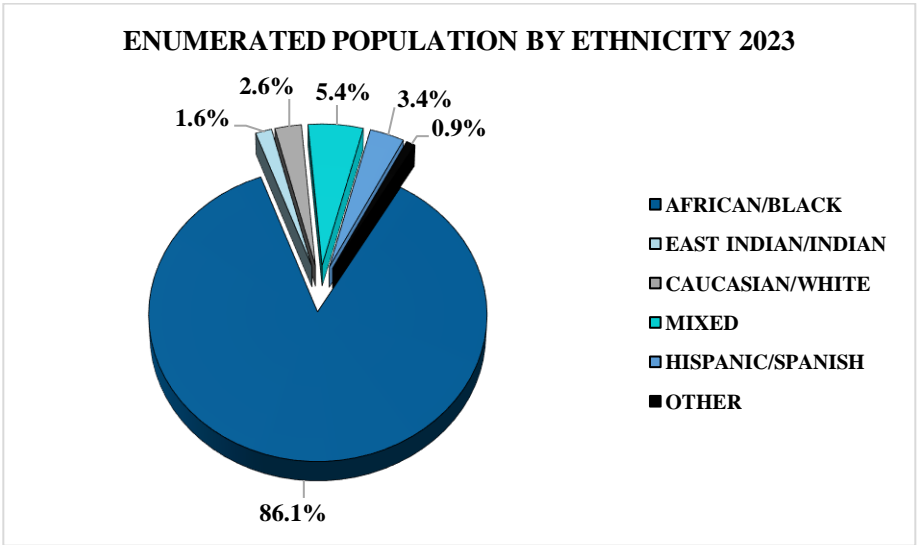
Source: Statistics Department, MONTSERRAT

Table 5: Population by Major Country of Birth by Sex – 2023

Country of Birth	Male	Female	Total	Percentage (%)
Montserrat	1251	1138	2389	56
Guyana	175	228	403	9.4
Jamaica	142	195	337	7.9
United Kingdom	69	85	154	3.6
Dominica	67	82	149	3.5
Haiti	62	69	131	3.1
Dominican Republic	44	80	124	2.9
Antigua and Barbuda	60	62	122	2.9
United States of America	35	29	64	1.5
Saint Kitts and Nevis	24	39	63	1.5
Others/Not Stated	180	149	329	7.7
Total	2,109	2,156	4,265	100

Source: Statistics Department, MONTSERRAT

Figure 7: Usual Resident Population by Ethnicity – September 2023



Source: Statistics Department, MONTSERAT

* Other includes Amerindian/Carib, Chinese, Portuguese

Table 6: Emigration by Year and Sex between May 2011 and September 2023

Year	Sex		Total
	Male	Female	
2011	7	8	15
2012	4	6	10
2013	9	2	11
2014	7	6	13
2015	13	13	26
2016	14	8	22
2017	18	16	34
2018	16	19	35
2019	10	23	33
2020	8	12	20
2021	23	29	52
2022	36	47	83
2023	26	40	66
N/A	-	-	5
Total	191	229	425

Source: Statistics Department, MONTSERRAT

N/A: Not available

Note: This data represents individuals who migrated from existing households.

However, if an entire family or a person living alone migrated, such cases were not captured in these statistics.

Infographic 2: Countries/Territories of Emigration between 2011 and 2023

COUNTRIES OF MIGRATION

2011- 2023



Table 7: Literacy Status of Enumerated Population 10 years and older by Ten-Year Age Group – 2023

Age Group	Literacy Status			Total
	Yes	No	Don't Know	
10 - 19 Years	504	4	0	508
20 - 29 Years	450	2	0	452
30 - 39 Years	584	6	1	591
40 - 49 Years	511	5	0	516
50 - 59 Years	632	14	0	646
60 - 69 Years	541	19	1	561
70 years and over	499	39	1	539
N/A	-	-	2	2
Total	3,721	89	5	3,815

Source: Statistics Department, MONTSERRAT

N/A— Not Available

Note: A literate person is one who can, with understanding, both read and write a short, simple statement on his or her everyday life.

Table 8: Highest Level of Education Reached: Enumerated Population 15 Years and Over by Ten-Year Age Group – 2023

Age Group	Highest Education Level Reached										Total
	None/No Schooling	Complete Primary	Incomplete Primary	Complete Secondary	Incomplete Secondary	Tertiary- Non- University	Tertiary- University	Other	Don't know	Not stated	
15 - 19 Years	0	16	0	125	76	31	4	0	0	0	252
20 - 29 Years	1	3	4	232	22	123	65	1	1	0	452
30 - 39 Years	3	15	5	237	70	109	148	0	2	2	591
40 - 49 Years	3	16	9	177	60	97	147	0	4	3	516
50 - 59 Years	11	52	27	197	80	103	167	0	6	3	646
60 - 69 Years	9	144	62	100	34	93	110	0	3	6	561
70 Years and Over	8	196	93	59	21	53	88	0	12	10	540
N/A	-	-	-	-	-	-	-	-	-	-	1
Total	35	442	200	1,127	363	609	729	1	28	24	3,559

Source: Statistics Department, MONTSERRAT

N/A: Not available

Table 9: Self-Reported Cases of Diabetes – Enumerated Population by Age Group and Sex 2023

Age Group	Sex		Total
	Male	Female	
Under 30 years	2	4	6
30 - 34 years	0	2	2
35 - 39 years	2	4	6
40 - 44 years	2	2	4
45 - 49 years	8	15	23
50 - 54 years	11	15	26
55 - 59 years	16	31	47
60 - 64 years	33	31	64
65 - 69 years	37	28	65
70 years and older	62	87	149
Total	173	219	392

Source: Statistics Department, MONTSERRAT

Table 10: Self-Reported Cases of Hypertension - Enumerated Population by Age Group and Sex 2023

Age Group	Sex		Total
	Male	Female	
Under 30 years	5	9	14
30 - 34 years	2	5	7
35 - 39 years	6	17	23
40 - 44 years	8	16	24
45 - 49 years	15	34	49
50 - 54 years	21	49	70
55 - 59 years	35	56	91
60 - 64 years	32	52	84
65 - 69 years	48	54	102
70 years and older	118	134	252
Total	290	426	716

Source: Statistics Department, MONTSERRAT

Table 11: Marital Status: Enumerated Population 16 Years and Over – 2023

Age Group	Marital Status								Total
	Single / never married	Married	Civil partnership	Legally separated	Divorced	Widowed	Don't know	Not stated	
16 - 19 years	197	0	0	0	0	0	0	0	197
20 - 29 years	414	31	0	1	2	0	1	3	452
30 - 39 years	446	130	0	1	9	0	0	5	591
40 - 49 years	315	166	0	5	23	5	0	2	516
50 - 59 years	329	235	0	11	55	13	0	3	646
60 - 69 years	256	202	2	11	49	41	0	0	561
70 years and over	163	209	2	10	45	106	1	2	538
N/A	-	-	-	-	-	-	-	3	3
Total	2,120	973	4	39	183	165	2	18	3,504

Source: Statistics Department, MONTSERRAT

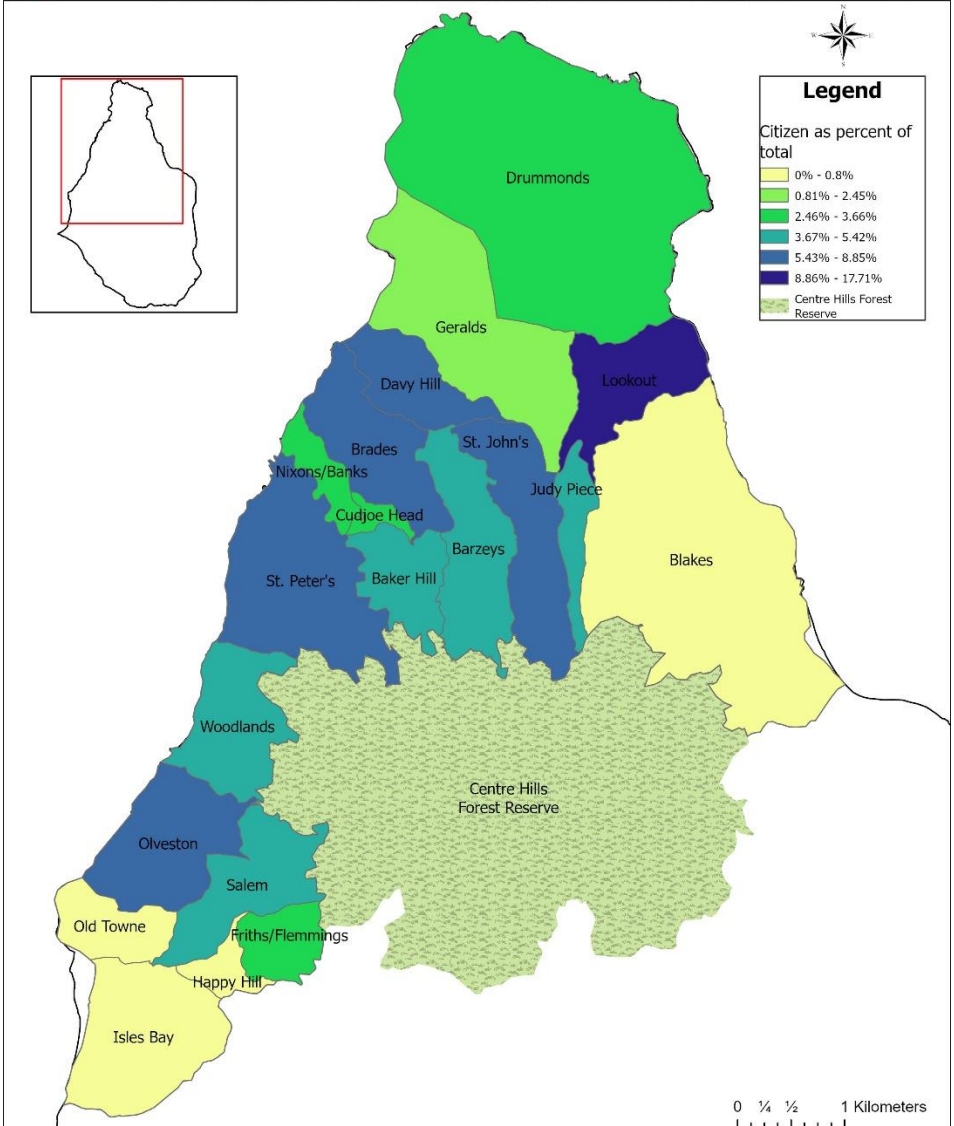
N/A: Not available

Map 4: Map Showing Distribution of Montserratians Across Enumeration Districts - 2023



MONTSERRAT POPULATION AND HOUSING CENSUS 2023

Distribution of Citizens Across Enumeration Districts



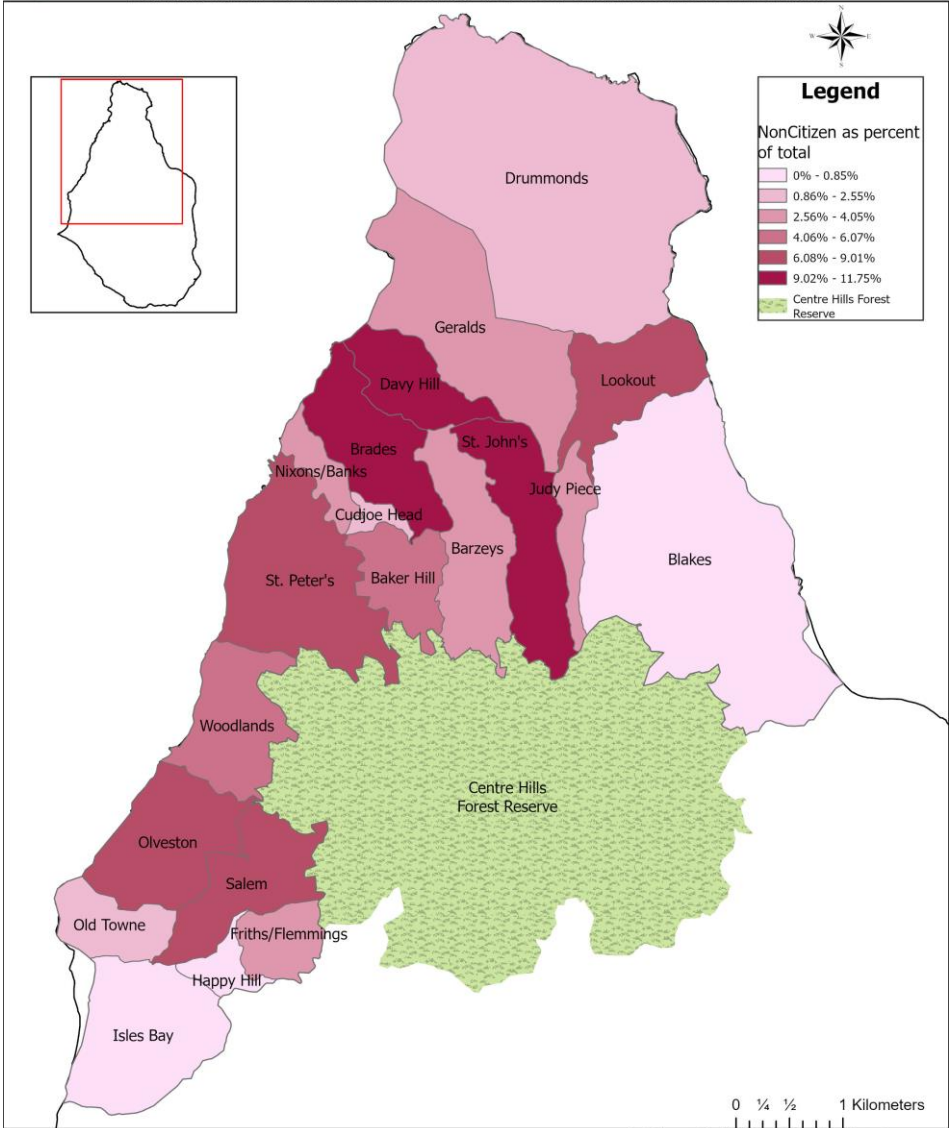
Data Source: Statistics Department, Montserrat
 Map Produced by: GIS Centre, MALHE (17/12/24)

Map 5: Map Showing Distribution of Non-Montserratians Across Enumeration Districts - 2023



MONTSERRAT POPULATION AND HOUSING CENSUS 2023

Distribution of Non-Citizens Across Enumeration Districts



Data Source: Statistics Department, Montserrat
 Map Produced by: GIS Centre, MALHE (17/12/24)

Topics included in the 2023 Population & Housing Census

Person Characteristics	Building & Living Quarters /Household Characteristics
<ul style="list-style-type: none"> • Personal Characteristics • Migration Birthplace & Residence • Disability • Health • Mental Health • Literacy • Education • Access to Mobile Phone and Internet • Training • Economic Activity • Employment • Income • Unemployed or Inactive • Financial Support • Agriculture & Fisheries • Unpaid Care & Domestic Work • Marital & Union Status • Fertility • Child Mortality 	<ul style="list-style-type: none"> • Characteristics of Occupied Building • Dwelling Unit • Housing Units by Facilities • Household Equipment, Appliances & Other Facilities • Environment • Crime • Covid-19 • International Migration (Emigration)

