

# STATISTICAL COMPENDIUM 2019-2022

Telling Montserrat's Story Through Data

-  Statistics Department Montserrat
-  +1 (664) 491-3797(4)/495-3797
-  statistics@gov.ms
-  <https://statistics.gov.ms>
-  statistics\_mni
-  statisticsdepartmentmni



## About Statistics Department Montserrat (SDM)

The Statistics Department of Montserrat is the sole Government Agency Responsible for compiling, analyzing and disseminating economic, social and demographic statistics about Montserrat.

## Copyright Notice

Users may apply or process this data, provided that the Statistics Department Montserrat is acknowledged as the original source of the data.

The data will also be made available on the Government of Montserrat's website at <https://www.gov.ms/?s=statistics> and our website at <https://statistics.gov.ms/publications/>

Published by

**GOVERNMENT OF MONTSERRAT**  
Statistics Department Montserrat

Ministry of Finance & Economic Management  
Government of Montserrat  
P O Box 292  
St. Johns

Telephone: (664) 491-3797 (4)  
Mobile: (664) 495-3797

Email: [Statistics@gov.ms](mailto:Statistics@gov.ms)

Website: [www.statistics.gov.ms](http://www.statistics.gov.ms)



Statistics Department Montserrat



## *OUR MOTTO*

Telling Montserrat's Story through data - Better Data, Better Lives.

## *OUR MISSION*

To collect, process, compile, analyze, interpret and disseminate statistical data for the use of the Public and Private sectors of Montserrat and for Regional and International organizations. We pride ourselves in working diligently as a team to produce timely, reliable, and relevant official statistics that are internationally comparable.

## *OUR VALUES*

At the Statistics Department Montserrat, we value –

Confidentiality

Professionalism

Integrity

Quality

Service to Internal and External Customers

Excellence and

Growth & Development.

## Foreword

Welcome to this comprehensive statistical compendium!

Statistics is not merely a field of study; it is a language that unlocks the stories hidden in data, true to our Department's motto – Telling Montserrat's story through data, Better data, Better lives - Every number represents a story waiting to be told.

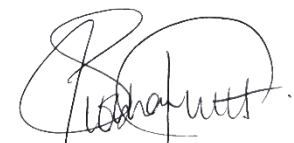
As you delve into the contents, I hope you will gain a deeper appreciation for the beauty of numbers and their ability to reveal meaningful insights. The tables within this document are ideal for statistical exploration, providing a concise and structured representation of our raw information. You will encounter a diverse array of tables, each offering a glimpse into different aspects of life on Montserrat. From economic indicators to demographic profiles and historical records - these tables are a testament to the power of data in illuminating our understanding of the complex tapestry of life on Montserrat.

I extend my gratitude to our dedicated team lead by Statistician Jasmine Jno-Baptiste, who have poured their expertise and passion into crafting this compendium. Their efforts have resulted in a compilation that offers practical wisdom and intellectual curiosity on our beloved Montserrat.

I encourage you to explore these pages with an open mind. Embrace the challenges that statistics presents, for it is through understanding and application that we truly harness its potential. Whether you are a seasoned data analyst, a curious researcher, or a student, this compendium has something to offer you.

May this indispensable resource aid in your quest for knowledge, insight, and evidence-based decision-making.

Wishing you an enlightening and rewarding exploration ahead!



*Siobhan N. N. Tuitt*  
*Chief Statistician*

## Table of Contents

<b>THE ECONOMY</b> .....	11
Table 1.1 – GDP by Economic Activity in Current Prices (CP) EC\$M 2019 – 2022.....	11
Table 1.2 – GDP by Economic Activity in Constant Prices (KP) EC\$M 2019 – 2022 .....	12
Table 1.3 – Contribution to GDP by Economic Activity in Current Prices (CP) EC\$M 2019 – 2022 .....	13
Table 1.4 – Contribution to GDP by Economic Activity in Constant Prices (KP) EC\$M 2019 – 2022 .....	14
Table 1.5 – Expenditure on Gross Domestic Product in Current Prices EC\$ 2016 – 2022.....	15
Table 1.6 – Balance of Payments Transactions BPM6 in EC\$M 2019 – 2022 .....	16
<b>BANKING AND FINANCE</b> .....	18
Table 2.1 – Commercial Banks: Assets EC\$'000s, 2019.....	18
Table 2.2 – Commercial Banks: Liabilities EC\$'000s, 2019.....	19
Table 2.3 – Commercial Banks: Total Deposits by Depositors EC\$'000s, 2019.....	19
Table 2.4 – Commercial Banks: Total Loans and Advances by Borrowers EC\$'000 2019.....	20
<b>MERCHANDISE TRADE</b> .....	21
Table 3.1 – Value of Imports, Exports and Balance of Trade EC\$M 2019 – 2022.....	22
Table 3.2 – Value of Imports by section of the SITC EC\$M 2019 – 2022.....	22
Table 3.3 – Value of Domestic Exports by section of the SITC EC\$M 2019 – 2022.....	23
Table 3.4 – Value of Re-Exports by section of the SITC EC\$M 2019 – 2022.....	23
Table 3.5 – Value of Imports Classified by section of the SITC EC\$ 2019 – 2022 .....	24
Table 3.6 – Percentage of Value of Imports from CARICOM 2019 – 2022.....	26
Table 3.7 – Sand and Aggregate Exports (Tonnage) 2019 – 2022.....	26
<b>CONSUMER PRICE INDICES</b> .....	27
Table 4.1 – Annual Average National Consumer Price Indices (CPI By Major Categories) 2019 – 2022.....	27
Table 4.2 – Consumer Price Index (monthly) 2019.....	28
Table 4.3 – Consumer Price Index (monthly) 2020.....	29
Table 4.4 – Consumer Price Index (monthly) 2021.....	30
Table 4.5 – Consumer Price Index (monthly) 2022.....	31
Table 4.6 – Annual Inflation Rates by Major Expenditure/Category ( <b>Period Average %</b> ): 2019 – 2022.....	32
Table 4.7 – Annual Inflation Rates by Major Expenditure/Category ( <b>End of Period %</b> ): 2019 – 2022.....	32
Table 4.8 – Monthly Inflation to Date 2022 from 2019 .....	33
Table 4.9 – Average Price of Selected Household Items 2019 – 2022.....	34
<b>LABOUR FORCE</b> .....	35
Table 5.1 – Labour Force Survey Key Findings – 2020.....	35
Table 5.2 – Labour Force by Age and Sex – 2020 .....	35
Table 5.3 – Employment Population by Sex Age Group – 2020 .....	36

Table 5.4 – Employment by Occupational Grouping and Sex – 2020.....	36
Table 5.5 – Labour Force Participation Rate by Sex and Age Group – 2020 .....	37
<b>CONSTRUCTION</b> .....	<b>38</b>
Table 6.1 – Construction Activity EC\$M (monthly) 2019.....	38
Table 6.2 – Construction Activity EC\$M (monthly) 2020.....	38
Table 6.3 – Construction Activity EC\$M (monthly) 2021.....	39
Table 6.4 – Construction Activity EC\$M (monthly) 2022.....	39
<b>TRANSPORT AND COMMUNICATION</b> .....	<b>40</b>
Table 7.1 – Number of Accidents (monthly) 2019 – 2022.....	40
Table 7.2 – Day of Accidents 2019 – 2022 .....	40
Table 7.3 – Accidents by Area 2019 – 2022 .....	41
Table 7.4 – Number of Vehicles Registered 2019 – 2022.....	42
Table 7.5 – New Vehicles Registered by type 2019 – 2022.....	42
Table 7.6 – Cargo Landed and Loaded Tonnage (monthly) 2019 – 2022 .....	43
Table 7.7 – Vehicle Imports (monthly) 2019 – 2022.....	43
Table 7.8 – Vehicle Imports by Type 2019 – 2022.....	44
Table 7.9 – Passenger Arrivals by Mode (monthly) 2019 – 2022 .....	44
Table 7.10 – Passenger Departures by Mode (monthly) 2019 – 2022.....	45
<b>TOURISM</b> .....	<b>46</b>
Table 8.1 – Tourism Statistics 2019 – 2022.....	47
Table 8.2 – Tourist (Stay-over) Arrivals by Country of Origin 2019 – 2022.....	48
Table 8.3 – Excursionist (Same day) Arrivals by Country of Origin 2019 – 2022.....	49
Table 8.4 – Visitor Arrivals (monthly) 2019 – 2022 .....	49
Table 8.5 – Visitor Arrivals by Mode of Entry (monthly) 2019 – 2022 .....	50
Table 8.6 – Cruise Passenger Arrivals (monthly) and Cruise Calls 2019 - 2022 .....	50
Table 8.7 – Yacht Arrivals and Calls (monthly) 2019 – 2022 .....	51
<b>AGRICULTURE AND FISHING</b> .....	<b>52</b>
Table 9.1 – Agricultural Production (lbs) 2019 – 2022.....	52
Table 9.2 – Agricultural Imports (lbs) 2019 – 2022 .....	53
Table 9.3 – Fish Landings (lbs) 2019 – 2022.....	54
Table 9.4 – Livestock (lbs) and Egg Data 2019 – 2022 .....	54
<b>ENVIRONMENT</b> .....	<b>55</b>
Table 10.1 – Fires by Type (monthly) 2019 <sup>R</sup> .....	55
Table 10.2 – Fires by type (monthly) 2020.....	55
Table 10.3 – Fires by type (monthly) 2021.....	56
Table 10.4 – Fires by type (monthly) 2022.....	56

Table 10.5 – Monthly Rainfall (mm) 2019 – 2022 .....	58
Table 10.6 – Rain Days (monthly) 2019 – 2022.....	58
Table 10.7 – Mean Relative Humidity % (monthly) 2019 – 2022 .....	59
Table 10.8 – Maximum and Minimum Temperature (monthly) 2019 – 2022.....	59
Table 10.9 – Dry Bulb Temperature (monthly) 2019 – 2022.....	60
<b>PRODUCTION AND CONSUMPTION .....</b>	<b>61</b>
Table 11.1 – Spring Production Gls 2019 – 2022 .....	61
Table 11.2 – Spring Production Gls (monthly) 2019 – 2022 .....	61
Table 11.3 – Water Consumption '000 Gls by Type of Consumer 2019 – 2022 .....	62
Table 11.4 – Electricity Generation (kWh) - Generator (monthly) 2019 – 2022 .....	62
Table 11.5 – Electricity Generation (kWh) - Solar (monthly) 2019 – 2022 .....	63
Table 11.6 – Total Annual Generation (kWh) 2019 – 2022.....	63
Table 11.7 – Total Annual Consumption (kWh) by Type of Consumer - 2019 – 2022 .....	63
<b>POPULATION.....</b>	<b>64</b>
Table 12.1 – Mid-Year Population Estimates 2019 – 2022.....	67
Table 12.2 – Census and Intercensal Counts - Usual Resident Population 1991, 2001, 2006, 2011, 2018.....	68
Table 12.3 – Enumerated Population by Enumeration District and Sex – 2018 .....	69
<b>VITAL STATISTICS AND HEALTH .....</b>	<b>70</b>
Table 13.1 – Vital Statistics and Fertility Measures.....	71
Table 13.2 – Births by Month 2019 – 2022 .....	72
Table 13.3 – Births by Mother’s Age Group 2019 – 2022 .....	72
Table 13.4 – Births by parity and age of mother – 2019 .....	73
Table 13.5 – Births by parity and age of mother – 2020 .....	73
Table 13.6 – Births by parity and age of mother – 2021 .....	74
Table 13.7 – Births by parity and age of mother – 2022 .....	74
Table 13.8 – Deaths by Age Group and Sex 2019 – 2022.....	75
Table 13.9 – Deaths by Months and Sex 2019 – 2022 .....	76
Table 13.10 – Leading Causes of Death 2019 – 2021.....	76
Table 13.11 – Leading Causes of Death (detailed) by Sex 2019 – 2021 .....	77
Table 13.12 – Summary of Surgical Procedures 2019 & 2020 .....	78
Table 13.13 – Age and Sex Distribution of Surgical Patients 2019 & 2020 .....	78
Table 13.14 – Summary of Surgical Procedures by Month, 2019 & 2020 .....	78
Table 13.15 – Main Surgical Procedures 2019 & 2020.....	79
Table 13.16 – Age and Sex Distribution of Minor Procedures (Performed in Casualty Department) 2019 & 2020.....	79
Table 13.17 – Summary of Minor Procedures (Performed in Casualty Department) by Month, 2019 & 2020 .....	80
Table 13.18 – Number of Public Sector Doctors and Nurses 2020 – 2022.....	80

<b>EDUCATION</b> .....	81
Table 14.1 – Early Childhood Education Enrolment 2019 – 2022.....	82
Table 14.2 – Early Childhood Education Enrolment by Sex and Age 2019 – 2020 (Public) .....	82
Table 14.3 – Early Childhood Education Enrolment by Sex and Age 2020 – 2021 (Public) .....	82
Table 14.4 – Early Childhood Education Enrolment by Sex and Age 2021 – 2022 (Public) .....	83
Table 14.5 – Early Childhood Enrolment by Sex and Age 2022 – 2023 (Public) .....	83
Table 14.6 – Early Childhood Education Enrolment by Sex and Age 2019 – 2020 (Private) .....	83
Table 14.7 – Early Childhood Education Enrolment by Sex and Age 2020 – 2021 (Private) .....	84
Table 14.8 – Early Childhood Education Enrolment by Sex and Age 2021 – 2022 (Private) .....	84
Table 14.9 – Early Childhood Education Enrolment by Sex and Age 2022 – 2023 (Private) .....	84
Table 14.10 – Total Primary School Enrolment by Grade 2019 – 2022.....	85
Table 14.11 – Total Primary School Enrolment by Grade, Age and Sex 2019 – 2020 .....	85
Table 14.12 – Total Primary School Enrolment by Grade, Age and Sex 2020 – 2021 .....	86
Table 14.13 – Total Primary School Enrolment by Grade, Age and Sex 2021 – 2022 .....	87
Table 14.14 – Total Primary School Enrolment by Grade, Age and Sex 2022 – 2023 .....	88
Table 14.15 – Secondary School Enrolment by Form, Age and Sex 2019 – 2020 .....	89
Table 14.16 – Secondary School Enrolment by Form, Age and Sex 2020 – 2021 .....	90
Table 14.17 – Secondary School Enrolment by Form, Age and Sex 2021 – 2022 .....	91
Table 14.18 – Secondary School Enrolment by Form, Age and Sex 2022 – 2023 .....	92
Table 14.19 – Community College Enrolment by Year, Age and Sex 2019 – 2020.....	93
Table 14.20 – Community College Enrolment by Year, Age and Sex 2020 – 2021 .....	93
Table 14.21 – Community College Enrolment by Year, Age and Sex 2021 – 2022.....	94
Table 14.22 – Community College Enrolment by Year, Age and Sex 2022 – 2023.....	94
Table 14.23 – CSEC Subject Entries and Passes – 2019 & 2020 (Secondary School).....	95
Table 14.24 – CSEC Subject Entries and Passes – 2021 & 2022 (Secondary School).....	96
<b>ELECTORAL STATISTICS</b> .....	97
Table 15.1 – Elections Results by Polling Divisions 2019.....	97
Table 15.2 – Ballot Cast by Polling Divisions 2019.....	98
Table 15.3 – Registered Voters Turn out by Division 2019.....	98
Table 15.4 – Voters by Party by Polling Divisions.....	98
Table 15.5 – Voters by Party by Polling Divisions and Box Count.....	99
Table 15.6 – Voter Turnout by District by Box Count.....	99
<b>PUBLIC ORDER</b> .....	100
Table 16.1 – Yearly Comparative Return of Crime 2019 – 2022 .....	100
Table 16.2 – Prison Committals by Age Range 2019 – 2022 .....	100



<b>MISCELLANEOUS</b> .....	101
Table 17.1 – Quarterly Money Services Businesses Statistics for 2019 (in EC\$'000) .....	101
Table 17.2 – Quarterly Money Services Businesses Statistics for 2020 (in EC\$'000) .....	102
Table 17.3 – Quarterly Money Services Businesses Statistics for 2021 (in EC\$'000) .....	103
Table 17.4 – Quarterly Money Services Businesses Statistics for 2022 (in EC\$'000) .....	104
Table 17.5 – Fuel Surcharge (monthly) 2019 – 2022.....	105
Table 17.6 – Average Fuel Price – Gasoline and Diesel 2019 – 2022.....	105
Table 17.7 – Grants and total number beneficiaries 2017 - 2022 .....	106
Table 17.8 – Complaints to Montserrat Complaints Commission 2017 – 2022.....	106

## Table of Figures

Figure 1 - Value of Trade Imports by Selected Country 2022 .....	21
Figure 2 - Labour Force Participation Rate by Age Group and Sex 2020 .....	37
Figure 3 - Visitor Arrivals by Type 2022 .....	46
Figure 4 - Tourist Arrivals by Country of Origin over 4-year period 2019 -2022 .....	48
Figure 5 - Meteorological Data .....	57
Figure 6 - Demographic Data .....	64
Figure 7 - Enumeration Areas Boundary .....	65
Figure 8 - Population by Enumeration District 2018 .....	66
Figure 9 - Education Statistics.....	81

## Acronyms and Symbols

GDP	-	Gross Domestic Product
FISIM	-	Financial Intermediation Services Indirectly Measures
GVA	-	Gross Value Added
HH	-	Household
NPISH	-	Non-Profit Institutions serving Households
BPM6	-	Balance of Payments (International Investment Position) Manual Sixth Edition
ECCU	-	Eastern Caribbean Currency Union
ECCB	-	Eastern Caribbean Central Bank
SITC	-	Standard International Trade Classification
Misc.	-	Miscellaneous
Manuf.	-	Manufactures
nes	-	Not elsewhere specified
CARICOM	-	The Caribbean Community and Common market
CPI	-	Consumer Price Index
M'tce	-	Maintenance
No.	-	Number
lbs	-	Pounds
Gls	-	Gallons
kWh	-	Kilowatt hours
R	-	Revised
P	-	Preliminary
E	-	Estimate
0	-	denotes a true value of zero
-	-	data not available for reference period

**Throughout this document, monetary units are in the Eastern Caribbean Currency (EC\$). The rate of exchange is fixed at EC\$ 2.7169 = US\$ 1.00**

# The Economy

Table 1.1 – GDP by Economic Activity in Current Prices (CP) EC\$M 2019 – 2022

<b>GDP BY SECTOR</b>	<b>2019R</b>	<b>2020R</b>	<b>2021R</b>	<b>2022P</b>
<b>Agriculture, Livestock and Forestry</b>	<b>1.24</b>	<b>1.26</b>	<b>1.15</b>	<b>1.28</b>
Crops	0.30	0.30	0.49	0.55
Livestock	0.88	0.89	0.60	0.67
Forestry	0.06	0.06	0.06	0.06
<b>Fishing</b>	<b>0.25</b>	<b>0.21</b>	<b>0.27</b>	<b>0.28</b>
<b>Mining &amp; Quarrying</b>	<b>4.26</b>	<b>4.76</b>	<b>5.54</b>	<b>6.11</b>
<b>Manufacturing</b>	<b>7.01</b>	<b>5.43</b>	<b>7.97</b>	<b>8.38</b>
<b>Electricity &amp; Water</b>	<b>4.36</b>	<b>4.42</b>	<b>4.32</b>	<b>4.50</b>
Electricity	2.66	2.67	2.61	2.75
Water	1.70	1.75	1.70	1.75
<b>Construction</b>	<b>10.59</b>	<b>8.44</b>	<b>14.32</b>	<b>15.79</b>
<b>Wholesale &amp; Retail Trade</b>	<b>13.98</b>	<b>11.20</b>	<b>11.81</b>	<b>12.65</b>
<b>Hotels &amp; Restaurants</b>	<b>2.67</b>	<b>1.83</b>	<b>1.2</b>	<b>2.07</b>
Hotels	2.06	1.09	0.41	0.92
Restaurants	0.61	0.74	0.79	1.15
<b>Transport, Storage and Communications</b>	<b>15.56</b>	<b>15.27</b>	<b>14.6</b>	<b>16.74</b>
Transport and Storage	11.97	11.79	11.02	12.94
Road Transport	6.00	6.45	5.07	6.00
Sea Transport	0.36	0.09	0.00	0.00
Air Transport	1.24	1.23	1.29	1.65
Supporting and Auxiliary Transport Activities	4.36	4.02	4.66	5.28
Communications	3.59	3.48	3.58	3.8
<b>Financial Intermediation</b>	<b>10.00</b>	<b>18.58</b>	<b>18.2</b>	<b>18.83</b>
Banks	9.51	13.00	12.57	13.04
Insurance	0.37	5.35	5.38	5.53
Activities Auxiliary to Financial Intermediation	0.12	0.23	0.25	0.26
<b>Real Estate, Renting and Business Activities</b>	<b>22.09</b>	<b>21.11</b>	<b>20.97</b>	<b>21.81</b>
Owner Occupied Dwellings	8.74	8.82	8.87	9.23
Real Estate Activities	10.20	10.29	10.35	10.77
Renting of Machinery and Equipment	0.67	0.27	0.05	0.06
Computer and Related Activities	0.33	0.35	0.32	0.33
Business Services	2.15	1.39	1.39	1.43
<b>Public Administration, Defense &amp; Compulsory Social Security</b>	<b>51.08</b>	<b>48.54</b>	<b>49.88</b>	<b>51.64</b>
<b>Education</b>	<b>5.89</b>	<b>5.82</b>	<b>5.86</b>	<b>6.04</b>
Public	5.48	5.45	5.52	5.68
Private	0.41	0.36	0.34	0.35
<b>Health and Social Work</b>	<b>4.59</b>	<b>8.33</b>	<b>8.33</b>	<b>8.56</b>
Public	3.02	6.78	6.78	6.98
Private	1.57	1.54	1.55	1.58
<b>Other Community, Social &amp; Personal Services</b>	<b>4.61</b>	<b>6.10</b>	<b>6.00</b>	<b>6.17</b>
<b>Activities of Private Households as Employers</b>	<b>0.78</b>	<b>0.69</b>	<b>0.77</b>	<b>0.79</b>
Less: FISIM	0.97	0.81	0.71	0.74
<b>GVA in Basic Prices</b>	<b>157.99</b>	<b>161.18</b>	<b>170.49</b>	<b>180.91</b>
<b>Growth Rate</b>	<b>5.59</b>	<b>2.02</b>	<b>5.78</b>	<b>6.11</b>
Plus: Product Taxes	20.23	20.29	20.96	21.88
Less: Subsidies	0.98	0.98	0.98	0.98
<b>GDP in Market Prices</b>	<b>177.24</b>	<b>180.49</b>	<b>190.47</b>	<b>201.81</b>
<b>Growth Rate</b>	<b>4.36</b>	<b>1.83</b>	<b>5.53</b>	<b>5.95</b>

Source: Eastern Caribbean Central Bank (ECCB)/ Statistics Department, Ministry of Finance and Economic Management (MoFEM), MONTserrat

Data as at October 2022

Note:

R--Revised

P-- Preliminary

Table 1.2 – GDP by Economic Activity in Constant Prices (KP) EC\$M 2019 – 2022

<b>GDP BY SECTOR</b>	<b>2019R</b>	<b>2020R</b>	<b>2021R</b>	<b>2022P</b>
<b>Agriculture, Livestock and Forestry</b>	<b>0.95</b>	<b>0.74</b>	<b>0.71</b>	<b>0.77</b>
Crops	0.28	0.29	0.44	0.49
Livestock	0.60	0.39	0.21	0.23
Forestry	0.06	0.06	0.06	0.06
<b>Fishing</b>	<b>0.17</b>	<b>0.15</b>	<b>0.19</b>	<b>0.19</b>
<b>Mining &amp; Quarrying</b>	<b>3.93</b>	<b>4.40</b>	<b>5.12</b>	<b>5.37</b>
<b>Manufacturing</b>	<b>5.79</b>	<b>4.16</b>	<b>6.34</b>	<b>6.47</b>
<b>Electricity &amp; Water</b>	<b>3.73</b>	<b>3.77</b>	<b>3.68</b>	<b>3.74</b>
Electricity	2.54	2.55	2.49	2.54
Water	1.19	1.22	1.19	1.20
<b>Construction</b>	<b>8.24</b>	<b>6.57</b>	<b>10.78</b>	<b>11.32</b>
<b>Wholesale &amp; Retail Trade</b>	<b>11.83</b>	<b>9.51</b>	<b>10.09</b>	<b>10.30</b>
<b>Hotels &amp; Restaurants</b>	<b>2.96</b>	<b>1.42</b>	<b>0.83</b>	<b>1.38</b>
Hotels	2.48	0.84	0.23	0.52
Restaurants	0.48	0.58	0.60	0.86
<b>Transport, Storage and Communications</b>	<b>20.24</b>	<b>19.26</b>	<b>19.67</b>	<b>21.49</b>
Transport and Storage	14.51	13.81	14.04	15.69
Road Transport	4.99	5.35	4.33	4.98
Sea Transport	0.29	0.08	0.00	0.00
Air Transport	0.41	0.17	0.17	0.22
Supporting and Auxiliary Transport Activities	8.83	8.22	9.54	10.49
Communications	5.73	5.46	5.63	5.80
<b>Financial Intermediation</b>	<b>10.30</b>	<b>20.35</b>	<b>21.61</b>	<b>21.98</b>
Banks	9.09	14.52	15.73	16.04
Insurance	0.34	4.96	4.99	5.04
Activities Auxiliary to Financial Intermediation	0.87	0.87	0.89	0.90
<b>Real Estate, Renting and Business Activities</b>	<b>19.67</b>	<b>19.45</b>	<b>19.33</b>	<b>19.53</b>
Owner Occupied Dwellings	8.74	8.82	8.87	8.96
Real Estate Activities	8.08	8.15	8.20	8.28
Renting of Machinery and Equipment	0.63	0.25	0.05	0.05
Computer and Related Activities	0.32	0.33	0.30	0.30
Business Services	1.90	1.91	1.91	1.93
<b>Public Administration, Defense &amp; Compulsory Social Security</b>	<b>58.14</b>	<b>55.34</b>	<b>56.89</b>	<b>57.74</b>
<b>Education</b>	<b>6.03</b>	<b>6.57</b>	<b>6.39</b>	<b>6.45</b>
Public	5.72	6.14	6.13	6.19
Private	0.32	0.43	0.26	0.27
<b>Health and Social Work</b>	<b>11.83</b>	<b>12.14</b>	<b>12.13</b>	<b>12.35</b>
Public	8.95	9.30	9.28	9.47
Private	2.88	2.84	2.85	2.88
<b>Other Community, Social &amp; Personal Services</b>	<b>3.86</b>	<b>3.94</b>	<b>3.93</b>	<b>3.97</b>
<b>Activities of Private Households as Employers</b>	<b>0.48</b>	<b>0.41</b>	<b>0.42</b>	<b>0.42</b>
Less: FISIM	1.57	1.58	1.57	1.60
<b>GVA in Basic Prices</b>	<b>166.57</b>	<b>166.58</b>	<b>176.54</b>	<b>181.87</b>
<b>Growth Rate</b>	<b>7.24</b>	<b>0.01</b>	<b>5.98</b>	<b>3.02</b>
Plus: Product Taxes less Subsidies	21.12	18.99	19.19	21.01
<b>GDP in Market Prices</b>	<b>187.69</b>	<b>185.57</b>	<b>195.74</b>	<b>202.88</b>
<b>Growth Rate</b>	<b>6.41</b>	<b>-1.13</b>	<b>5.48</b>	<b>3.65</b>

Source: Eastern Caribbean Central Bank (ECCB)/ Statistics Department, Ministry of Finance and Economic Management (MoFEM), MONTserrat  
Data as at October 2022

*Note:*

R--Revised  
P-- Preliminary

Table 1.3 – Contribution to GDP by Economic Activity in Current Prices (CP) EC\$M 2019 – 2022

<b>GDP BY SECTOR</b>	<b>2019R</b>	<b>2020R</b>	<b>2021R</b>	<b>2022P</b>
<b>Agriculture, Livestock and Forestry</b>	<b>0.78</b>	<b>0.78</b>	<b>0.67</b>	<b>0.71</b>
Crops	0.19	0.19	0.29	0.30
Livestock	0.56	0.55	0.35	0.37
Forestry	0.04	0.04	0.04	0.03
<b>Fishing</b>	<b>0.16</b>	<b>0.13</b>	0.16	0.16
<b>Mining &amp; Quarrying</b>	<b>2.70</b>	<b>2.95</b>	<b>3.25</b>	<b>3.38</b>
<b>Manufacturing</b>	<b>4.44</b>	<b>3.37</b>	<b>4.68</b>	<b>4.63</b>
<b>Electricity &amp; Water</b>	<b>2.76</b>	<b>2.74</b>	<b>2.53</b>	<b>2.49</b>
Electricity	1.69	1.66	1.53	1.52
Water	1.07	1.08	1.00	0.97
<b>Construction</b>	<b>6.70</b>	<b>5.24</b>	<b>8.40</b>	<b>8.73</b>
<b>Wholesale &amp; Retail Trade</b>	<b>8.85</b>	<b>6.95</b>	<b>6.93</b>	<b>6.99</b>
<b>Hotels &amp; Restaurants</b>	<b>1.69</b>	<b>1.14</b>	<b>0.70</b>	<b>1.15</b>
Hotels	1.30	0.68	0.24	0.51
Restaurants	0.39	0.46	0.46	0.64
<b>Transport, Storage and Communications</b>	<b>9.85</b>	<b>9.47</b>	<b>8.56</b>	<b>9.25</b>
Transport and Storage	7.58	7.31	6.46	7.15
Road Transport	3.80	4.00	2.97	3.32
Sea Transport	0.23	0.06	0.00	0.00
Air Transport	0.79	0.76	0.75	0.91
Supporting and Auxiliary Transport Activities	2.76	2.49	2.73	2.92
Communications	2.27	2.16	2.10	2.10
<b>Financial Intermediation</b>	<b>6.33</b>	<b>11.53</b>	<b>10.68</b>	<b>10.41</b>
Banks	6.02	8.07	7.37	7.21
Insurance	0.23	3.32	3.16	3.06
Activities Auxiliary to Financial Intermediation	0.08	0.14	0.15	0.14
<b>Real Estate, Renting and Business Activities</b>	<b>13.98</b>	<b>13.10</b>	<b>12.3</b>	<b>12.05</b>
Owner Occupied Dwellings	5.53	5.47	5.20	5.10
Real Estate Activities	6.46	6.38	6.07	5.95
Renting of Machinery and Equipment	0.42	0.16	0.03	0.03
Computer and Related Activities	0.21	0.21	0.19	0.18
Business Services	1.36	0.86	0.81	0.79
<b>Public Administration, Defense &amp; Compulsory Social Security</b>	<b>32.33</b>	<b>30.12</b>	<b>29.25</b>	<b>28.54</b>
<b>Education</b>	<b>3.73</b>	<b>3.61</b>	<b>3.44</b>	<b>3.34</b>
Public	3.47	3.38	3.24	3.14
Private	0.26	0.23	0.20	0.20
<b>Health and Social Work</b>	<b>2.91</b>	<b>5.17</b>	<b>4.88</b>	<b>4.73</b>
Public	1.91	4.21	3.97	3.86
Private	0.99	0.96	0.91	0.88
<b>Other Community, Social &amp; Personal Services</b>	<b>2.92</b>	<b>3.79</b>	<b>3.52</b>	<b>3.41</b>
<b>Activities of Private Households as Employers</b>	<b>0.49</b>	<b>0.43</b>	<b>0.45</b>	<b>0.44</b>
Less: FISIM	0.61	0.50	0.42	0.41
<b>Total</b>	<b>100.00</b>	<b>100.00</b>	<b>100.00</b>	<b>100.00</b>

Source: Eastern Caribbean Central Bank (ECCB)/ Statistics Department, Ministry of Finance and Economic Management (MoFEM), MONTserrat  
Data as at October 2022

Note:

R--Revised

P--Preliminary

Table 1.4 – Contribution to GDP by Economic Activity in Constant Prices (KP) EC\$M 2019 – 2022

<b>GDP BY SECTOR</b>	<b>2019R</b>	<b>2020R</b>	<b>2021R</b>	<b>2022P</b>
<b>Agriculture, Livestock and Forestry</b>	<b>0.57</b>	<b>0.44</b>	<b>0.40</b>	<b>0.43</b>
Crops	0.17	0.17	0.25	0.27
Livestock	0.36	0.24	0.12	0.13
Forestry	0.04	0.04	0.03	0.03
<b>Fishing</b>	<b>0.10</b>	<b>0.09</b>	<b>0.11</b>	<b>0.11</b>
<b>Mining &amp; Quarrying</b>	<b>2.36</b>	<b>2.64</b>	<b>2.90</b>	<b>2.95</b>
<b>Manufacturing</b>	<b>3.48</b>	<b>2.50</b>	<b>3.59</b>	<b>3.56</b>
<b>Electricity &amp; Water</b>	<b>2.24</b>	<b>2.26</b>	<b>2.08</b>	<b>2.06</b>
Electricity	1.52	1.53	1.41	1.40
Water	0.71	0.73	0.68	0.66
<b>Construction</b>	<b>4.94</b>	<b>3.94</b>	<b>6.11</b>	<b>6.22</b>
<b>Wholesale &amp; Retail Trade</b>	<b>7.10</b>	<b>5.71</b>	<b>5.72</b>	<b>5.66</b>
<b>Hotels &amp; Restaurants</b>	<b>1.78</b>	<b>0.85</b>	<b>0.47</b>	<b>0.76</b>
Hotels	1.49	0.50	0.13	0.28
Restaurants	0.29	0.35	0.34	0.47
<b>Transport, Storage and Communications</b>	<b>12.15</b>	<b>11.56</b>	<b>11.14</b>	<b>11.82</b>
Transport and Storage	8.71	8.29	7.95	8.62
Road Transport	3.00	3.21	2.45	2.74
Sea Transport	0.17	0.05	0.00	0.00
Air Transport	0.24	0.10	0.10	0.12
Supporting and Auxiliary Transport Activities	5.30	4.93	5.40	5.77
Communications	3.44	3.28	3.19	3.19
<b>Financial Intermediation</b>	<b>6.18</b>	<b>12.22</b>	<b>12.24</b>	<b>12.08</b>
Banks	5.46	8.72	8.91	8.82
Insurance	0.20	2.97	2.83	2.77
Activities Auxiliary to Financial Intermediation	0.52	0.52	0.50	0.49
<b>Real Estate, Renting and Business Activities</b>	<b>11.81</b>	<b>11.68</b>	<b>10.95</b>	<b>10.74</b>
Owner Occupied Dwellings	5.25	5.29	5.03	4.93
Real Estate Activities	4.85	4.89	4.64	4.55
Renting of Machinery and Equipment	0.38	0.15	0.03	0.03
Computer and Related Activities	0.19	0.20	0.17	0.17
Business Services	1.14	1.14	1.08	1.06
<b>Public Administration, Defense &amp; Compulsory Social Security</b>	<b>34.90</b>	<b>33.22</b>	<b>32.22</b>	<b>31.75</b>
<b>Education</b>	<b>3.62</b>	<b>3.94</b>	<b>3.62</b>	<b>3.55</b>
Public	3.43	3.68	3.47	3.40
Private	0.19	0.26	0.15	0.15
<b>Health and Social Work</b>	<b>7.10</b>	<b>7.29</b>	<b>6.87</b>	<b>6.79</b>
Public	5.37	5.58	5.26	5.20
Private	1.73	1.70	1.62	1.58
<b>Other Community, Social &amp; Personal Services</b>	<b>2.31</b>	<b>2.36</b>	<b>2.23</b>	<b>2.18</b>
<b>Activities of Private Households as Employers</b>	<b>0.29</b>	<b>0.25</b>	<b>0.24</b>	<b>0.23</b>
Less: FISIM	0.94	0.95	0.89	0.88
<b>Total</b>	<b>100.00</b>	<b>100.00</b>	<b>100.00</b>	<b>100.00</b>

Source: Eastern Caribbean Central Bank (ECCB)/ Statistics Department, Ministry of Finance and Economic Management (MoFEM), MONTserrat  
Data as at October 2022

*Note*

R--Revised  
P-- Preliminary

Table 1.5 – Expenditure on Gross Domestic Product in Current Prices EC\$ 2016 – 2022

	2016	2017	2018	2019	2020	2021
<b>TOTAL CONSUMPTION</b>	<b>211,577,884</b>	<b>218,131,350</b>	<b>225,985,073</b>	<b>235,497,945</b>	<b>260,983,150</b>	<b>276,664,963</b>
<b>Government Final Consumption Expenditure</b>	<b>86,863,696</b>	<b>90,780,732</b>	<b>97,392,710</b>	<b>100,787,445</b>	<b>122,166,138</b>	<b>120,081,260</b>
Collective Consumption	65,628,918	66,344,095	71,401,450	74,000,960	99,660,931	98,537,873
Individual Consumption	21,234,778	24,436,637	25,991,261	26,786,485	22,505,207	21,543,387
<b>Individual Consumption Expenditure by HH</b>	<b>122,098,408</b>	<b>123,917,749</b>	<b>125,176,395</b>	<b>130,837,399</b>	<b>134,643,678</b>	<b>152,465,425</b>
Individual Consumption Expenditure by NPISH	2,615,780	3,432,868	3,415,968	3,873,102	4,173,335	4,118,278
<b>GROSS CAPITAL FORMATION</b>	<b>51,229,521</b>	<b>32,751,794</b>	<b>35,066,497</b>	<b>45,604,365</b>	<b>42,149,604</b>	<b>54,650,567</b>
<b>GROSS FIXED CAPITAL FORMATION</b>	<b>49,729,521</b>	<b>30,251,794</b>	<b>34,066,497</b>	<b>44,604,365</b>	<b>41,149,604</b>	<b>53,650,567</b>
Construction	35,009,411	19,416,113	22,498,157	30,762,270	30,562,125	39,092,970
Transport Equipment	5,061,969	4,987,133	5,146,050	6,103,318	2,576,992	3,634,912
Other Machinery & Equipment	9,158,141	5,348,548	5,922,290	7,238,777	7,510,487	10,422,685
Other Products	500,000	500,000	500,000	500,000	500,000	500,000
<b>Changes in Inventories</b>	<b>1,500,000</b>	<b>2,500,000</b>	<b>1,000,000</b>	<b>1,000,000</b>	<b>1,000,000</b>	<b>1,000,000</b>
<b>GOODS and SERVICES</b>	<b>-88,847,306</b>	<b>-88,829,113</b>	<b>-78,282,432</b>	<b>-76,854,863</b>	<b>- 75,935,063</b>	<b>- 103,429,488</b>
<b>Total Exports of Goods and Services</b>	<b>49,607,714</b>	<b>54,920,076</b>	<b>62,889,703</b>	<b>56,163,975</b>	<b>40,863,451</b>	<b>37,910,862</b>
Exports of Goods	10,864,199	16,173,095	15,571,025	15,086,164	15,442,964	22,584,013
Exports of Services	38,743,515	38,746,981	47,318,678	41,077,811	25,420,487	15,326,849
<b>Total Imports of Goods and Services</b>	<b>138,455,020</b>	<b>143,749,189</b>	<b>141,172,135</b>	<b>133,018,838</b>	<b>116,798,514</b>	<b>141,340,350</b>
Imports of Goods	88,074,058	73,578,713	85,065,764	78,859,920	73,010,093	81,551,314
Imports of Services	50,380,962	70,170,476	56,106,372	54,158,918	43,788,421	59,789,036
<b>GDP at Market Prices</b>	<b>173,960,099</b>	<b>162,054,030</b>	<b>182,769,138</b>	<b>204,247,447</b>	<b>227,197,692</b>	<b>227,886,042</b>
Less: Taxes on Products	21,691,093	20,399,263	22,920,000	23,360,000	20,290,000	20,960,000
Add: Subsidies on Products	980,000	980,000	980,000	980,000	980,000	980,000
<b>GROSS VALUE ADDED AT BASIC PRICES</b>	<b>153,249,006</b>	<b>142,634,767</b>	<b>160,829,138</b>	<b>181,867,447</b>	<b>207,887,692</b>	<b>207,906,042</b>
<b>GDP at Market Prices Stats Office</b>	<b>169,270,000</b>	<b>161,060,000</b>	<b>169,710,000</b>	<b>176,450,000</b>	<b>176,873,914</b>	<b>187,954,775</b>

Source: Statistics Department, Ministry of Finance and Economic Management (MoFEM), MONTserrat

Table 1.6 – Balance of Payments Transactions BPM6 in EC\$M 2019 – 2022

Category	2019 R	2020 R	2021 P	2022 E
<b>Current account as % of GDP</b>	<b>1.57</b>	<b>8.34</b>	<b>(18.18)</b>	<b>(20.73)</b>
<b>1. Current account</b>	<b>2.79</b>	<b>15.05</b>	<b>(34.63)</b>	<b>(41.82)</b>
1.cr. Credit	153.88	154.94	131.83	140.36
1.dr. Debit	151.09	139.88	166.46	182.18
<b>1.A Goods and services</b>	<b>(70.12)</b>	<b>(74.94)</b>	<b>(103.33)</b>	<b>(114.15)</b>
1.A.cr. Credit	61.09	41.52	39.22	42.53
1.A.dr. Debit	131.21	116.46	142.55	156.68
<b>1.A.a Goods</b>	<b>(62.95)</b>	<b>(57.57)</b>	<b>(63.92)</b>	<b>(77.72)</b>
1.A.a.cr. Credit	15.10	15.44	22.78	17.32
1.A.a.dr. Debit	78.06	73.01	86.70	95.04
Of which: 1.A.a.1.1.cr. Re-exports (credit)	2.19	2.72	7.11	1.21
<b>1.A.b Services</b>	<b>(7.16)</b>	<b>(17.37)</b>	<b>(39.41)</b>	<b>(36.43)</b>
1.A.b.cr. Credit	45.99	26.08	16.44	25.21
1.A.b.dr. Debit	53.15	43.45	55.85	61.64
<b>1.A.b.4 Travel</b>	<b>12.91</b>	<b>4.86</b>	<b>(4.95)</b>	<b>0.43</b>
1.A.b.4.cr. Credit	31.81	13.79	4.32	12.31
1.A.b.4.dr. Debit	18.91	8.93	9.28	11.87
<b>1.A.b.10 Other business services</b>	<b>(6.39)</b>	<b>(12.74)</b>	<b>(17.44)</b>	<b>(18.02)</b>
1.A.b.10.cr. Credit	1.82	1.56	1.35	1.42
1.A.b.10.dr. Debit	8.21	14.30	18.80	19.45
1.A.b.10.2 Professional and management consulting services	(3.03)	(4.74)	(5.84)	(6.14)
1.A.b.10.2.cr. Credit	1.04	1.04	1.06	1.12
1.A.b.10.2.dr. Debit	4.07	5.78	6.90	7.26
1.A.b.10.3 Technical, trade-related, and other business services	(3.37)	(8.00)	(11.61)	(11.89)
1.A.b.10.3.cr. Credit	0.77	0.52	0.29	0.31
1.A.b.10.3.dr. Debit	4.14	8.53	11.90	12.19
<b>1.B Primary income</b>	<b>4.06</b>	<b>5.30</b>	<b>4.19</b>	<b>3.39</b>
1.B.2.cr. Credit	5.20	5.47	4.61	4.21
1.B.2.dr. Debit	1.01	0.08	0.32	0.72
<b>1.B.2.2 Portfolio investment</b>	<b>3.80</b>	<b>3.84</b>	<b>3.57</b>	<b>3.11</b>
1.B.2.2.cr. Credit	3.80	3.84	3.57	3.11
1.B.2.2.dr. Debit	-	-	-	-
<b>1.C Secondary income</b>	<b>68.84</b>	<b>84.69</b>	<b>64.51</b>	<b>68.94</b>
1.C.cr. Credit	87.22	107.58	87.65	93.25
1.C.dr. Debit	18.38	22.90	23.13	24.32
<b>1.C.1 General government</b>	<b>71.65</b>	<b>86.72</b>	<b>65.46</b>	<b>71.01</b>
1.C.1.cr. Credit	78.72	91.16	73.94	80.26
1.C.1.dr. Debit	7.06	4.44	8.47	9.25
<b>1.C.2 Financial corporations, nonfinancial corporations, households, and NPISHs</b>	<b>(2.81)</b>	<b>(2.03)</b>	<b>(0.95)</b>	<b>(2.07)</b>
1.C.2.cr. Credit	8.50	16.43	13.71	13.00
1.C.2.dr. Debit	11.32	18.45	14.66	15.07
<b>1.C.2.1 Personal transfers (Current transfers between resident and nonresident households)</b>	<b>(0.47)</b>	<b>(4.54)</b>	<b>1.87</b>	<b>0.80</b>
1.C.2.1.cr. Credit	5.39	10.46	9.81	11.15
1.C.2.1.dr. Debit	5.86	14.99	7.93	10.35
Of which: 1.C.2.1.1 Workers' remittances	(0.58)	(4.75)	1.67	0.58
1.C.2.1.1.cr. Credit	5.29	10.25	9.61	10.92
1.C.2.1.1.dr. Debit	5.86	14.99	7.93	10.35



<b>2. Capital account</b>	<b>2.41</b>	<b>20.03</b>	<b>34.53</b>	<b>41.07</b>
2.cr. Credit	2.41	20.03	34.53	41.07
2.dr. Debit	-	-	-	-
<b>2.2 Capital transfers</b>	<b>2.41</b>	<b>20.03</b>	<b>34.53</b>	<b>41.07</b>
2.2.cr. Credit	2.41	20.03	34.53	41.07
2.2.dr. Debit	-	-	-	-
<b>2.2.1 General government</b>	<b>0.52</b>	<b>16.39</b>	<b>33.92</b>	<b>40.43</b>
2.2.1.cr. Credit	0.52	16.39	33.92	40.43
2.2.1.dr. Debit	-	-	-	-
<b>Net lending (+) / net borrowing (-) (balance from current and capital account)</b>	<b>5.20</b>	<b>35.09</b>	<b>(0.10)</b>	<b>(0.76)</b>
<b>3. Financial account</b>	<b>-</b>	<b>-</b>	<b>-</b>	<b>-</b>
<b>Net lending (+) / net borrowing (-) (balance from financial account)</b>	<b>1.58</b>	<b>8.86</b>	<b>(18.33)</b>	<b>(10.73)</b>
<b>3.1 Direct investment</b>	<b>(3.02)</b>	<b>(7.93)</b>	<b>(6.58)</b>	<b>(6.86)</b>
<b>3.1.A Net acquisition of financial assets</b>	<b>-</b>	<b>-</b>	<b>-</b>	<b>-</b>
<b>3.1.L Net incurrence of liabilities</b>	<b>3.02</b>	<b>7.93</b>	<b>6.58</b>	<b>6.86</b>
<b>3.1.L.1 Equity and investment fund shares</b>	<b>5.17</b>	<b>7.86</b>	<b>4.57</b>	<b>4.74</b>
<b>3.1.L.1.1 Equity other than reinvestment of earnings</b>	<b>4.70</b>	<b>8.30</b>	<b>4.71</b>	<b>4.50</b>
3.1.L.1.1.1 Direct investor in direct investment enterprises	4.70	8.30	4.71	4.50
<b>3.2 Portfolio investment</b>	<b>(12.96)</b>	<b>23.77</b>	<b>88.47</b>	<b>2.25</b>
<b>3.2.A Net acquisition of financial assets</b>	<b>(12.96)</b>	<b>23.77</b>	<b>88.47</b>	<b>2.25</b>
<b>3.2.A.1 Equity and investment fund shares</b>	<b>-</b>	<b>-</b>	<b>81.36</b>	<b>8.01</b>
<b>3.2.A.1.2 Deposit-taking corporations, except central bank</b>	<b>-</b>	<b>-</b>	<b>81.36</b>	<b>8.01</b>
<b>3.2.A.2 Debt securities</b>	<b>(12.96)</b>	<b>23.77</b>	<b>7.12</b>	<b>(5.77)</b>
<b>3.2.A.2.2 Deposit-taking corporations, except central bank</b>	<b>(12.96)</b>	<b>23.77</b>	<b>7.12</b>	<b>(5.77)</b>
<b>3.4 Other investment</b>	<b>0.22</b>	<b>(49.81)</b>	<b>(13.72)</b>	<b>14.64</b>
<b>3.4.A Net acquisition of financial assets</b>	<b>2.53</b>	<b>(57.37)</b>	<b>(35.94)</b>	<b>21.71</b>
<b>3.4.L Net incurrence of liabilities</b>	<b>2.31</b>	<b>(7.55)</b>	<b>(22.22)</b>	<b>7.07</b>
<b>3.4.2 Currency and deposits</b>	<b>(3.72)</b>	<b>(46.38)</b>	<b>(13.58)</b>	<b>12.54</b>
<b>3.4.2.A Net acquisition of financial assets</b>	<b>0.25</b>	<b>(52.60)</b>	<b>(35.20)</b>	<b>21.89</b>
<b>3.4.2.A.2 Deposit-taking corporations, except central bank</b>	<b>(2.25)</b>	<b>(47.77)</b>	<b>(35.24)</b>	<b>21.84</b>
<b>3.4.2.A.3 General government</b>	<b>2.50</b>	<b>(4.83)</b>	<b>0.04</b>	<b>0.05</b>
<b>3.4.2.L Net incurrence of liabilities</b>	<b>3.97</b>	<b>(6.22)</b>	<b>(21.62)</b>	<b>9.35</b>
<b>3.4.2.L.2 Deposit-taking corporations, except central bank</b>	<b>3.97</b>	<b>(6.22)</b>	<b>(21.62)</b>	<b>9.35</b>
<b>3.5 Reserve assets</b>	<b>17.34</b>	<b>42.84</b>	<b>(86.51)</b>	<b>(20.76)</b>
<b>3.5.4 Other reserve assets</b>	<b>17.34</b>	<b>42.84</b>	<b>(86.51)</b>	<b>(20.76)</b>
<b>3.5.4.1 Currency and deposits</b>	<b>17.34</b>	<b>42.84</b>	<b>(86.51)</b>	<b>(20.76)</b>
3.5.4.1.1 Claims on monetary authorities	17.34	42.84	(86.51)	(20.76)
<b>Net errors and omissions</b>	<b>(3.62)</b>	<b>(26.23)</b>	<b>(18.24)</b>	<b>(9.98)</b>

Source: Eastern Caribbean Central Bank and Statistics Department, Montserrat

Data as at 31 October 2022

Note: All Data are Preliminary.

R--Revised

E-- Estimated

P-- Preliminary

## Banking and Finance

Table 2.1 – Commercial Banks: Assets EC\$'000s, 2019

Period	Claims on					Investments				Total Assets
	Central Bank			Loans & Advances	Foreign Assets	Government Securities	Treasury Bills	Other ECCU Investments	Other Assets	
	Notes and Coins	Deposits	Other ECCU Banks							
January	3,554	102,875	2,143	104,398	194,451	12,651	23,690	5,016	6,777	455,555
February	3,188	104,585	2,213	104,430	187,197	12,597	23,690	5,016	5,689	448,605
March	4,063	102,433	2,283	104,493	182,779	12,597	23,690	5,016	6,305	443,659
April	3,735	98,858	1,844	104,074	179,785	12,597	21,721	5,016	6,178	433,808
May	3,530	93,827	2,044	104,054	209,596	12,484	19,765	4,905	5,667	455,872
June	2,910	97,387	1,794	104,675	201,275	12,484	19,707	5,016	4,951	450,199
July	2,872	100,000	2,263	104,445	188,566	12,430	16,809	5,016	5,443	437,844
August	3,993	96,521	1,682	105,254	182,984	12,412	16,809	5,016	5,093	429,764
September	2,863	99,004	1,505	104,642	200,899	15,412	13,809	4,844	5,782	448,760
October	3,320	102,625	2,421	104,809	193,008	15,412	13,809	4,832	4,725	444,961
November	2,565	103,101	1,879	104,958	180,925	20,699	13,809	4,832	4,547	437,315

Source: Eastern Caribbean Central Bank

Table 2.2 – Commercial Banks: Liabilities EC\$'000s, 2019

Period	EC\$ Deposits				Total Deposits	Balances Due				Total Liabilities and Equity
	Demand	Savings	Time	Foreign Currency Deposits		ECCB	ECCU Banks	Foreign Liabilities	Other Liabilities	
January	131,781	179,714	23,400	17,181	352,076	10	6,895	35,922	26,328	455,555
February	122,524	180,879	23,162	18,037	344,602	10	7,587	36,644	26,073	448,605
March	118,271	181,310	23,317	18,044	340,942	10	6,669	36,272	25,335	443,659
April	111,368	180,707	22,017	17,532	331,624	-	6,514	36,048	25,116	433,808
May	134,824	178,542	22,070	17,442	352,878	-	6,516	35,534	25,663	455,872
June	128,054	180,075	22,084	17,358	347,571	9	6,617	35,601	25,370	450,199
July	116,926	180,265	22,204	16,605	336,000	8	6,196	35,002	26,996	437,844
August	110,503	179,271	22,242	15,892	327,908	8	7,367	34,799	25,834	429,764
September	130,005	179,801	22,168	15,997	347,971	8	6,538	34,611	25,850	448,760
October	121,865	180,649	22,163	17,566	342,243	12	6,236	33,924	25,527	444,961
November	114,485	180,684	22,190	16,522	333,881	11	6,640	33,998	25,583	437,315
December	134,721	180,976	21,975	18,453	356,125	11	6,310	33,982	25,711	459,774

Source: Eastern Caribbean Central Bank

Table 2.3 – Commercial Banks: Total Deposits by Depositors EC\$'000s, 2019

Period	Residents					Non-Residents	Total Deposits
	Central & Local Government	Private Businesses	Statutory Bodies	Households	Non-Bank Financial Institution		
January	61,216	47,538	10,040	168,445	18,874	45,963	352,076
February	50,598	47,498	11,016	168,229	20,185	47,076	344,602
March	42,726	49,389	12,096	166,724	21,693	48,314	340,942
April	35,240	48,194	11,002	167,563	21,191	48,434	331,624
May	61,661	46,829	10,326	166,769	20,124	47,169	352,878
June	56,364	47,062	9,966	165,566	20,801	47,812	347,571
July	44,095	46,805	11,791	165,402	20,099	47,808	336,000
August	39,209	45,171	11,052	164,923	19,747	47,806	327,908
September	59,141	44,613	10,710	165,532	19,475	48,500	347,971
October	51,410	46,733	10,591	166,814	18,702	47,993	342,243
November	42,354	45,848	10,825	167,110	19,009	48,735	333,881
December	61,577	46,741	10,528	167,044	18,471	51,764	356,125

Source: Eastern Caribbean Central Bank

Table 2.4 – Commercial Banks: Total Loans and Advances by Borrowers EC\$'000 2019

Period	Residents		Non-Residents	Total Loans & Advances
	Households	Private Businesses		
January	79,423	9,105	15,870	104,398
February	79,491	9,060	15,879	104,430
March	79,253	8,663	16,577	104,493
April	78,713	8,583	16,778	104,074
May	78,548	8,748	16,758	104,054
June	79,207	8,761	16,707	104,675
July	78,068	8,201	18,176	104,445
August	78,279	8,737	18,238	105,254
September	78,047	8,388	18,207	104,642
October	77,806	8,208	18,795	104,809
November	77,537	8,714	18,707	104,958
December	77,798	8,913	18,609	105,320

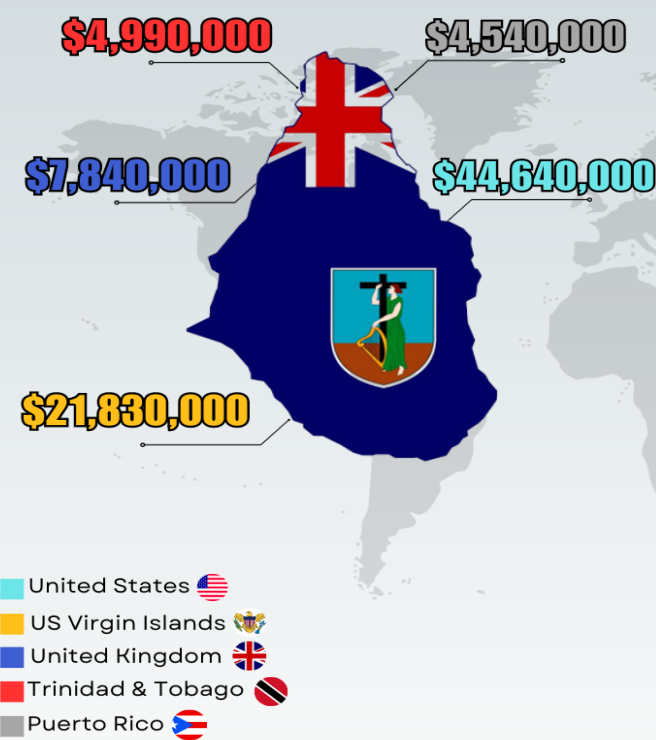
Source: Eastern Caribbean Central Bank

# Merchandise Trade

Figure 1 - Value of Trade Imports by Selected Country 2022

## VALUE OF IMPORTS FOR 2022

### VALUE OF IMPORTS FROM TOP 5 MAIN TRADING PARTNERS EC\$ 2022



### VALUE OF IMPORTS FROM SELECTED CARICOM STATES EC\$ 2022

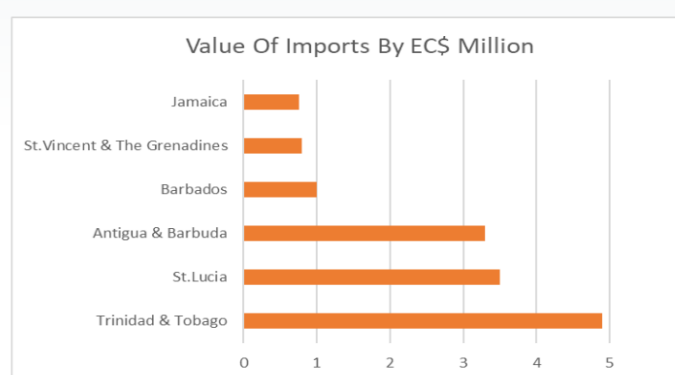
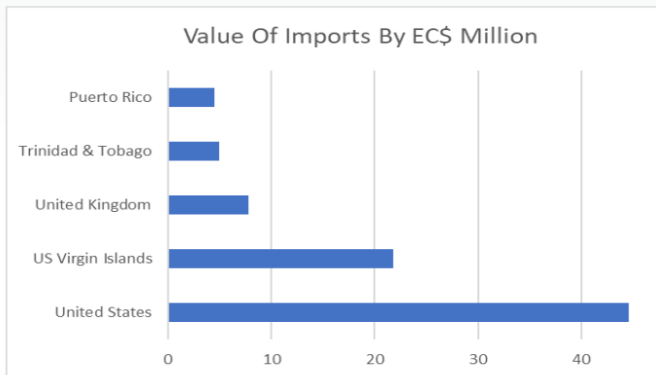
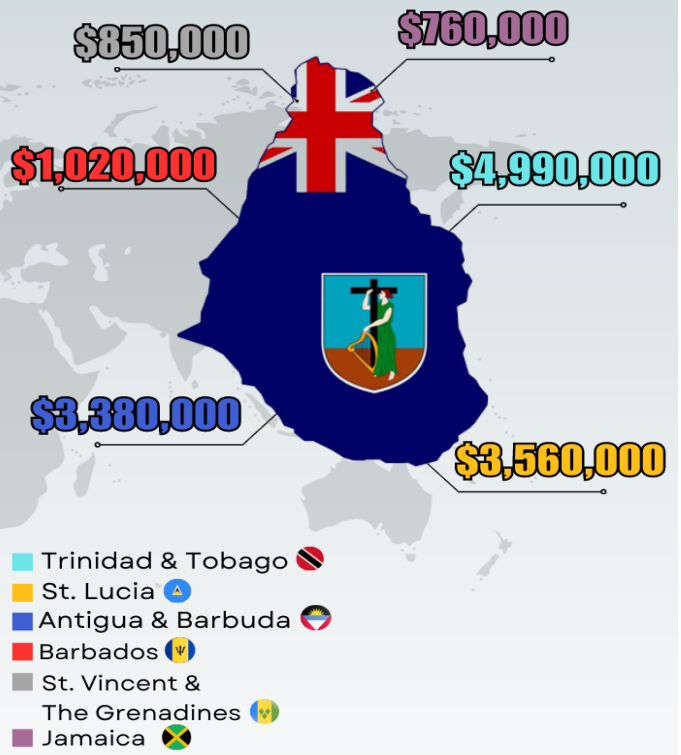


Table 3.1 – Value of Imports, Exports and Balance of Trade EC\$M 2019 – 2022

Period	Imports	Exports			Balance of Trade
		Domestic Exports	Re-exports	Total Exports	
2019	87.98	12.90	2.19	15.09	-72.89
2020	82.82	12.71	2.72	15.43	-67.37
2021	97.92	15.66	7.11	22.77	-75.15
2022	105.94	17.12	0.82	17.94	-88.00

Source: Montserrat Customs and Revenue Services/Statistics Department, Ministry of Finance and Economic Management (MoFEM), MONTSEERRAT  
Updated as at September 26, 2023

\*Balance of Trade – The difference between the value of a country's exports and the value of imports over a given period

Table 3.2 – Value of Imports by section of the SITC EC\$M 2019 – 2022

SITC	Category	2019	2020	2021	2022
		<b>87.98</b>	<b>82.80</b>	<b>97.92</b>	<b>105.94</b>
0	Food & Live Animals	15.29	15.81	16.11	16.84
1	Beverages & Tobacco	4.51	4.08	3.75	4.24
2	Crude Material, Inedible (except fuel)	1.26	1.07	1.53	1.44
3	Minerals, Fuels, Lubricants & Related Materials	14.71	11.81	15.93	23.25
4	Animal & vegetable Oils & Fats	0.26	0.33	0.33	0.50
5	Chemicals	5.71	6.76	7.09	8.52
6	Manuf. Goods Classified by Material	13.83	12.20	13.06	13.82
7	Machinery & Transport Equipment	23.62	21.61	30.04	25.49
8	Misc. Manuf. Articles	8.66	9.12	9.98	11.58
9	Commodities & Transactions nes	0.13	0.04	0.09	0.27
1	Gold, monetary	-	-	-	-

Source: Montserrat Customs and Revenue Services/Statistics Department, Ministry of Finance and Economic Management (MoFEM), MONTSEERRAT  
Updated as at September, 26 2023

Table 3.3 – Value of Domestic Exports by section of the SITC EC\$M 2019 – 2022

SITC	Category	2019	2020	2021	2022
		<b>12.90</b>	<b>12.71</b>	<b>15.66</b>	<b>17.12</b>
0	Food & Live Animals	0.00	0.00	0.00	0.00
1	Beverages & Tobacco	0.22	0.03	0.00	0.00
2	Crude Material, Inedible (except fuel)	12.22	12.19	14.13	16.62
3	Minerals, Fuels, Lubricants & Related Materials	0.09	0.00	0.00	0.01
4	Animal & vegetable Oils & Fats	0.00	0.00	0.00	0.00
5	Chemicals	0.00	0.00	0.00	0.00
6	Manuf. Goods Classified by Material	0.03	0.01	0.09	0.05
7	Machinery & Transport Equipment	0.15	0.46	0.68	0.04
8	Misc. Manuf. Articles	0.15	0.01	0.74	0.22
9	Commodities & Transactions nes	0.04	0.01	0.01	0.17
1	Gold, monetary	-	-	-	-

Source: Montserrat Customs and Revenue Services/Statistics Department, Ministry of Finance and Economic Management (MoFEM), MONTSERRAT.  
Updated as at May 22, 2023

Table 3.4 – Value of Re-Exports by section of the SITC EC\$M 2019 – 2022

SITC	Category	2019	2020	2021	2022
		<b>2.19</b>	<b>2.72</b>	<b>7.11</b>	<b>0.82</b>
0	Food & Live Animals	0.00	0.00	0.02	0.00
1	Beverages & Tobacco	0.00	0.43	0.00	0.00
2	Crude Material, Inedible (except fuel)	0.17	0.00	0.03	0.05
3	Minerals, Fuels, Lubricants & Related Materials	0.98	0.36	0.05	0.01
4	Animal & vegetable Oils & Fats	0.00	0.00	0.00	0.00
5	Chemicals	0.00	0.00	0.00	0.00
6	Manuf. Goods Classified by Material	0.04	0.43	0.14	0.07
7	Machinery & Transport Equipment	0.89	1.31	6.15	0.44
8	Misc. Manuf. Articles	0.09	0.18	0.71	0.13
9	Commodities & Transactions nes	0.01	0.01	0.01	0.12
1	Gold, monetary	-	-	-	-

Source: Montserrat Customs and Revenue Services  
Updated as at September 26, 2023

Table 3.5 – Value of Imports Classified by section of the SITC EC\$ 2019 – 2022

Sections	Divisions	Imports			
		2019	2020	2021	2022
<b>0</b>	<b>Food and Live Animals</b>	<b>15,291,891</b>	<b>15,810,879</b>	<b>16,113,819</b>	<b>16,841,045</b>
00	Live animals other than animals of division 03	61,137	83,165	74,189	64,430
01	Meat and meat preparations	2,573,954	2,692,052	2,882,756	3,147,446
02	Dairy products and birds' eggs	2,088,507	2,029,967	1,999,975	1,970,136
03	Fish (not marine mammals)	1,110,601	1,305,466	1,212,813	1,269,476
04	Cereals and cereal preparations	2,235,977	2,304,342	2,465,401	2,513,540
05	Vegetables and fruit	2,901,743	2,970,101	2,760,307	3,053,996
06	Sugars	370,811	434,268	388,730	475,217
07	Coffee	413,054	413,280	443,884	453,165
08	Feeding stuff for animals (not including unmilled cereals)	767,415	793,229	911,914	1,016,393
09	Margarine and shortening	2,768,691	2,785,009	2,973,850	2,877,247
<b>1</b>	<b>Beverages and Tobacco</b>	<b>4,505,956</b>	<b>4,077,074</b>	<b>3,753,684</b>	<b>4,240,595</b>
11	Beverages	4,287,985	3,893,611	3,594,655	3,945,170
12	Tobacco and tobacco manufactures	217,971	183,463	159,029	295,425
<b>2</b>	<b>Crude Material, Inedible (except fuel)</b>	<b>1,262,858</b>	<b>1,069,117</b>	<b>1,531,503</b>	<b>1,438,876</b>
21	Hides	0	0	323	0
22	Oil-seeds and oleaginous fruits	20,813	23,640	18,852	26,406
23	Crude rubber (including synthetic and reclaimed)	323	10,598	590	395
24	Cork and wood	976,848	878,562	832,868	847,262
25	Pulp and waste paper	879	0	138	173
26	Textile fibres (other than wool tops and other combed wool) and their wastes (not manufactured into yarn or fabric)	11,413	17,412	43,682	18,774
27	Crude fertilizers	183,391	57,493	547,593	483,143
28	Iron ore and concentrates	8,219	0	0	0
29	Crude animal and vegetable materials	60,974	81,412	87,458	62,723.31
<b>3</b>	<b>Minerals, Fuels, Lubricants &amp; Related Materials</b>	<b>14,711,442</b>	<b>11,806,705</b>	<b>15,928,996</b>	<b>23,245,473</b>
32	Coal	6,451	20,935	23,070	25,613
33	Petroleum	13,967,345	11,084,773	14,923,473	20,357,650
34	Gas	737,647	700,997	982,453	2,862,210
35	Electric current	-	-	-	-
<b>4</b>	<b>Animal &amp; vegetable Oils &amp; Fats</b>	<b>258,034</b>	<b>328,573</b>	<b>327,742</b>	<b>501,244</b>
41	Animal oils and fats	90	176	389	2,304
42	Fixed vegetable fats and oils	205,447	257,595	227,245	365,278
43	Animal or vegetable fats and oils	52,497	70,803	100,107	133,662
<b>5</b>	<b>Chemicals</b>	<b>5,706,597</b>	<b>6,758,854</b>	<b>7,090,016</b>	<b>8,520,977</b>
51	Organic chemicals	61,670	74,819	75,589	76,198
52	Inorganic chemicals	68,278	34,278	165,497	135,124
53	Dyeing	1,159,393	1,055,057	1,030,951	1,299,365
54	Medicinal and pharmaceutical products	637,959	708,085	1,343,941	1,164,167
55	Essential oils and resinoids and perfume materials; toilet	1,737,501	1,800,093	1,696,770	1,645,297
56	Fertilizers (other than those of group 272)	22,599	66,675	76,328	68,998
57	Plastics in primary forms	77,455	65,775	90,553	90,448
58	Plastics in non-primary forms	769,703	1,598,440	932,795	1,107,304
59	Chemical materials and products	1,172,039	1,355,632	1,677,592	2,934,077
<b>6</b>	<b>Manuf. Goods Classified by Materia</b>	<b>13,830,078</b>	<b>12,200,603</b>	<b>13,058,532</b>	<b>13,817,918</b>
61	Leather	9,355	15,041	14,579	13,253
62	Rubber manufactures	1,378,441	1,475,868	1,742,311	1,560,309



Sections	Divisions	Imports			
		2019	2020	2021	2022
63	Cork and wood manufactures (excluding furniture)	1,053,081	853,844	1,024,288	850,195
64	Paper	1,438,020	1,374,96	1,232,946	1,335,673
65	Textile yarn	789,784	1,069,353	955,781	776,021
66	Non-metallic mineral manufactures	2,466,696	2,683,902	2,331,651	2,442,082
67	Iron and steel	1,112,393	857,182	1,378,733	1,380,570
68	Non-ferrous metals	347,548	499,380	261,234	293,810
69	Manufactures of metals	5,234,760	3,371,437	4,117,010	5,166,005
<b>7</b>	<b>Machinery &amp; Transport Equipment</b>	<b>23,623,441</b>	<b>21,606,650</b>	<b>30,042,965</b>	<b>25,490,709</b>
71	Power-generating machinery and equipment	1,223,488	831,525	926,869	1,007,789
72	Machinery specialized for particular industries	2,791,083	1,753,130	6,030,218	4,959,997
73	Metalworking machinery	90,419	79,543	88,785	59,535
74	General industrial machinery and equipment	3,322,939	3,033,628	4,631,778	4,872,910
75	Office machines and automatic data-processing machines	1,492,598	2,083,882	1,686,981	1,863,741
76	Telecommunications and sound-recording and reproducing apparatus and equipment	1,999,252	2,126,302	3,768,278	3,294,505
77	Electrical machinery	4,899,788	6,270,159	6,405,601	5,037,664
78	Road vehicles (including air-cushion vehicles)	7,588,843	5,311,904	6,372,670	4,331,540
79	Other transport equipment	215,032	115,577	131,785	63,028
<b>8</b>	<b>Misc. Manuf. Articles</b>	<b>8,785,675</b>	<b>9,160,552</b>	<b>10,068,947</b>	<b>11,847,259</b>
81	Prefabricated buildings; sanitary	1,222,618	1,331,421	860,660	893,534
82	Furniture and parts thereof; bedding	1,995,264	1,413,727	1,893,609	2,337,986
83	Travel goods	177,539	172,447	281,231	217,318
84	Articles of apparel and clothing accessories	1,176,334	1,235,918	1,966,473	2,186,339
85	Footwear	415,511	409,770	525,349	545,472
87	Professional	1,043,104	1,039,295	889,501	985,576
88	Photographic apparatus	142,502	203,695	508,536	494,519
89	Miscellaneous manufactured articles	2,484,712	3,315,649	3,057,864	3,921,288
<b>9</b>	<b>Commodities &amp; Transactions nes</b>	<b>128,091</b>	<b>38,630</b>	<b>85,725</b>	<b>265,228</b>
91	Postal packages not classified according to kind	-	-	-	-
93	Special transactions and commodities not classified according to kind	92,928	32,161	81,595	243,251
96	Coin (other than gold coin)	35,163	6,469	4,130	21,977
97	Gold	-	-	-	-

Source: Montserrat Customs and Revenue Services/Statistics Department, Ministry of Finance and Economic Management (MoFEM), MONTSERAT.  
Updated as at September 26, 2023

Table 3.6 – Percentage of Value of Imports from CARICOM 2019 – 2022

Country	2019	2020	2021	2022
Antigua & Barbuda	14.32	16.52	16.25	21.03
Bahamas	0	0	0.10	0
Barbados	11.17	13.63	12.85	6.37
Dominica	2.45	2.00	1.94	1.99
Grenada	2.45	2.28	2.68	3.01
Guyana	2.30	1.66	1.24	1.16
Jamaica	6.67	7.23	5.08	4.71
Saint Kitts & Nevis	4.93	4.88	25.95	2.69
Saint Lucia	0.98	0.34	0.50	22.19
Saint Vincent & The Grenadines	5.72	7.64	4.88	5.32
British Virgin Islands	0.17	0.02	0.10	0.42
Trinidad & Tobago	48.85	43.79	28.43	31.10
<b>Total</b>	<b>100</b>	<b>100</b>	<b>100</b>	<b>100</b>

Source: Montserrat Customs and Revenue Services/Statistics Department, Ministry of Finance and Economic Management (MoFEM), MONTSERRAT.  
Updated as at September 26, 2023

Table 3.7 – Sand and Aggregate Exports (Tonnage) 2019 – 2022

Month	2019	2020	2021	2022
January	28,900	14,677	25,850	35,150
February	35,950	44,379	23,850	30,300
March	28,300	46,857	42,800	32,750
April	40,600	0	50,050	38,850
May	33,600	27,550	32,850	62,510
June	33,700	52,548	46,000	32,650
July	46,250	36,950	42,150	49,450
August	40,900	41,900	53,350	45,650
September	21,070	36,344	41,550	25,530
October	28,900	41,400	37,100	40,000
November	38,100	33,550	54,600	33,300
December	23,100	46,200	41,350	38,000
<b>Total</b>	<b>399,370</b>	<b>422,355</b>	<b>491,500</b>	<b>464,140</b>

Source: Montserrat Port Authority

## Consumer Price Indices

Table 4.1 – Annual Average National Consumer Price Indices (CPI By Major Categories) 2019 – 2022

Category	Weights	2019	2020	2021	2022
<b>All Items</b>	<b>99.91</b>	<b>99.69</b>	<b>97.80</b>	<b>100.35</b>	<b>103.34</b>
Food and Non-Alcoholic Beverages	16.32	98.87	100.74	101.79	105.23
Alcohol Beverages, Tobacco and Narcotics	0.43	109.39	114.93	105.61	103.42
Clothing and Footwear	4.76	84.85	87.42	95.51	105.11
Housing, Water, Electricity, Gas, and Other Fuels	33.05	102.76	99.17	101.83	103.82
Furnishing, Household Equipment and Routine HH M'tce	3.48	99.08	97.52	102.01	99.46
Health	1.89	107.38	107.21	107.24	104.91
Transport	18.08	100.92	101.06	100.81	104.48
Communication	8.33	105.50	93.80	96.85	100.89
Recreation and Culture	2.44	95.69	95.36	100.04	101.99
Education	2.85	104.22	104.03	104.74	100.16
Restaurants and Hotels	2.11	101.54	100.87	109.27	102.15
Miscellaneous Goods and Services	6.17	84.54	82.40	94.50	102.46

Source: Statistics Department, Ministry of Finance and Economic Management (MoFEM), MONTSERRAT

Table 4.2 – Consumer Price Index (monthly) 2019

Category	Jan	Feb	Mar	Apr	May	Jun	Jul	Aug	Sep	Oct	Nov	Dec
<b>All Items</b>	<b>98.72</b>	<b>98.54</b>	<b>98.44</b>	<b>100.61</b>	<b>99.50</b>	<b>100.48</b>	<b>99.50</b>	<b>99.98</b>	<b>99.91</b>	<b>99.91</b>	<b>100.30</b>	<b>100.37</b>
Food and Non-Alcoholic Beverages	97.26	97.00	97.80	98.56	97.95	98.77	98.86	100.66	99.31	100.01	100.13	100.15
Alcohol Beverages, Tobacco and Narcotics	102.57	102.89	102.88	103.01	103.09	114.21	114.48	114.01	114.18	114.22	113.56	113.54
Clothing and Footwear	84.67	84.65	84.65	83.82	83.82	83.35	83.46	83.46	86.43	86.41	86.75	86.76
Housing, Water, Electricity, Gas, and Other Fuels	102.21	101.82	100.83	104.77	101.64	104.24	103.08	103.45	103.45	101.92	102.68	103.00
Furnishing, Household Equipment and Routine HH M'tce	97.74	97.74	98.69	99.50	99.48	99.47	98.18	97.96	97.89	100.85	100.72	100.71
Health	107.43	107.43	107.43	108.07	107.28	107.28	107.28	107.28	107.28	107.28	107.28	107.28
Transport	99.32	99.21	99.43	102.39	102.60	102.52	99.56	99.93	99.84	101.77	102.24	102.19
Communication	103.70	103.70	103.90	106.91	106.91	106.91	105.66	105.66	105.66	105.66	105.66	105.66
Recreation and Culture	94.35	94.19	94.39	94.49	94.49	94.83	97.00	97.47	97.64	96.42	96.44	96.57
Education	103.97	103.97	103.97	103.97	103.97	103.97	104.43	104.43	104.43	104.84	104.84	103.79
Restaurants and Hotels	101.21	101.21	101.21	101.61	101.61	101.61	101.39	101.39	101.39	101.92	101.92	101.92
Miscellaneous Goods and Services	84.98	85.08	85.00	85.12	84.85	84.74	84.42	84.38	84.39	83.51	83.98	83.97

Source: Statistics Department, Ministry of Finance and Economic Management (MoFEM), MONTSERRAT

Table 4.3 – Consumer Price Index (monthly) 2020

Category	Jan	Feb	Mar	Apr	May	Jun	Jul	Aug	Sep	Oct	Nov	Dec
<b>All Items</b>	<b>96.54</b>	<b>99.16</b>	<b>98.92</b>	<b>98.40</b>	<b>96.69</b>	<b>97.78</b>	<b>97.49</b>	<b>98.42</b>	<b>98.03</b>	<b>97.21</b>	<b>97.60</b>	<b>97.37</b>
Food and Non-Alcoholic Beverages	100.49	100.58	100.64	100.64	100.65	100.29	100.92	101.10	100.64	100.09	100.65	102.21
Alcohol Beverages, Tobacco and Narcotics	113.45	113.42	113.42	113.42	113.42	114.83	116.80	116.58	115.93	115.52	116.07	116.23
Clothing and Footwear	86.53	86.53	87.40	87.40	87.47	87.65	87.61	87.98	87.82	87.63	87.63	87.39
Housing, Water, Electricity, Gas, and Other Fuels	94.22	102.38	101.61	100.41	97.36	99.51	97.26	99.69	99.26	99.17	100.03	99.17
Furnishing, Household Equipment and Routine HH M'tce	97.63	97.65	97.10	97.10	98.04	98.18	98.23	98.09	97.62	97.13	97.13	96.33
Health	107.28	107.28	107.08	107.08	107.08	107.08	107.08	107.08	107.08	107.45	107.45	107.45
Transport	103.20	102.76	102.64	102.10	97.75	100.16	102.98	103.26	102.52	98.28	98.45	98.55
Communication	93.27	93.27	93.27	93.27	93.12	93.12	94.88	94.88	94.34	94.07	94.07	93.99
Recreation and Culture	95.43	95.43	95.18	94.02	95.18	94.70	95.08	95.08	95.15	96.22	96.32	96.52
Education	103.79	103.79	103.79	103.79	103.79	103.79	103.79	103.79	103.79	104.74	104.74	104.74
Restaurants and Hotels	100.94	100.94	100.69	100.69	100.69	100.69	101.18	102.05	102.61	99.98	99.98	99.98
Miscellaneous Goods and Services	84.30	84.30	84.30	84.30	84.30	84.28	80.03	80.26	80.39	81.68	81.44	79.22

Source: Statistics Department, Ministry of Finance and Economic Management (MoFEM), MONTSERAT

Table 4.4 – Consumer Price Index (monthly) 2021

Category	Jan	Feb	Mar	Apr	May	Jun	Jul	Aug	Sep	Oct	Nov	Dec
<b>All Items</b>	<b>98.05</b>	<b>97.46</b>	<b>97.06</b>	<b>100.24</b>	<b>100.71</b>	<b>101.14</b>	<b>100.79</b>	<b>101.06</b>	<b>101.43</b>	<b>101.56</b>	<b>102.32</b>	<b>102.40</b>
Food and Non-Alcoholic Beverages	101.93	101.94	101.78	99.70	100.21	100.62	100.99	100.33	103.29	103.14	103.65	103.87
Alcohol Beverages, Tobacco and Narcotics	116.00	116.00	115.51	99.82	102.54	103.45	103.14	103.04	101.10	101.83	102.32	102.60
Clothing and Footwear	89.15	89.15	90.31	97.74	97.74	97.74	97.74	97.97	97.97	96.88	96.88	96.88
Housing, Water, Electricity, Gas, and Other Fuels	99.81	100.63	98.95	100.68	101.89	102.87	101.56	102.58	102.51	102.20	104.05	104.21
Furnishing, Household Equipment and Routine HH M'tce	99.65	99.66	98.89	102.18	102.33	102.29	103.77	103.75	104.00	102.51	102.52	102.57
Health	106.89	106.89	106.89	106.89	106.89	106.89	106.89	106.89	106.89	108.28	108.28	108.28
Transport	100.26	100.94	101.54	100.19	100.44	100.47	100.14	100.23	100.10	101.67	101.87	101.87
Communication	87.05	87.05	87.05	100.00	100.00	100.00	100.00	100.00	100.00	100.00	100.52	100.52
Recreation and Culture	103.17	103.17	102.15	98.82	98.82	98.94	98.89	98.89	98.89	99.58	99.58	99.58
Education	104.74	104.74	104.74	104.74	104.74	104.74	104.74	104.74	104.74	104.74	104.74	104.74
Restaurants and Hotels	109.17	109.17	109.17	109.17	109.17	109.17	109.36	109.36	109.36	109.36	109.36	109.36
Miscellaneous Goods and Services	83.24	70.74	71.38	101.14	100.06	100.79	100.49	100.89	100.26	101.62	101.69	101.67

Source: Statistics Department, Ministry of Finance and Economic Management (MoFEM), MONTSEERRAT

Table 4.5 – Consumer Price Index (monthly) 2022

Category	Jan	Feb	Mar	Apr	May	Jun	Jul	Aug	Sep	Oct	Nov	Dec
<b>All Items</b>	<b>103.45</b>	<b>103.28</b>	<b>103.14</b>	<b>104.50</b>	<b>104.64</b>	<b>105.55</b>	<b>105.82</b>	<b>106.67</b>	<b>99.32</b>	<b>101.12</b>	<b>101.48</b>	<b>101.14</b>
Food and Non-Alcoholic Beverages	104.94	104.96	105.59	106.52	107.34	108.01	110.44	110.16	99.33	101.13	101.52	102.81
Alcohol Beverages, Tobacco and Narcotics	105.30	105.34	105.73	104.82	100.55	105.39	105.80	105.97	101.00	101.62	97.82	101.70
Clothing and Footwear	105.22	105.22	105.22	106.46	106.39	106.16	108.95	108.85	100.00	102.95	102.95	102.95
Housing, Water, Electricity, Gas, and Other Fuels	104.79	104.25	103.56	107.23	107.47	109.86	107.99	110.75	98.33	97.01	98.11	96.53
Furnishing, Household Equipment and Routine HH M'tce	98.57	98.66	98.57	100.69	100.41	100.55	97.24	97.19	99.88	100.58	100.60	100.60
Health	105.16	105.16	105.16	104.49	104.49	104.49	101.09	101.09	100.00	109.25	109.25	109.25
Transport	101.96	102.07	102.20	102.37	102.27	102.32	106.88	106.97	99.86	108.97	108.90	109.03
Communication	103.38	103.38	103.38	100.17	100.17	100.17	97.74	97.74	100.00	101.53	101.53	101.53
Recreation and Culture	101.51	101.26	101.26	102.68	102.69	102.66	105.06	105.04	100.00	100.91	100.92	99.93
Education	100.00	100.00	100.00	100.00	100.00	100.00	100.00	100.00	100.00	100.65	100.65	100.65
Restaurants and Hotels	100.05	99.95	99.95	103.44	103.44	103.44	105.22	105.22	100.00	101.69	101.69	101.69
Miscellaneous Goods and Services	103.69	103.47	103.12	103.38	103.27	103.91	104.98	105.00	99.83	100.09	99.35	99.46

Source: Statistics Department, Ministry of Finance and Economic Management (MoFEM), MONTSERRAT

Table 4.6 – Annual Inflation Rates by Major Expenditure/Category (Period Average %): 2019 – 2022

Category	2019	2020	2021	2022
<b>All Items</b>	<b>-1.07</b>	<b>-1.89</b>	<b>2.61</b>	<b>2.98</b>
Food and Non-Alcoholic Beverages	0.76	0.59	-0.41	1.52
Alcohol Beverages, Tobacco and Narcotics	6.92	1.22	-9.14	0.95
Clothing and Footwear	-0.39	0.77	9.30	8.70
Housing, Water, Electricity, Gas, and Other Fuels	-1.08	-3.72	2.68	0.27
Furnishing, Household Equipment and Routine HH M'tce	2.69	-3.17	5.90	-3.13
Health	0.09	-0.07	-0.20	-3.48
Transport	-0.40	-1.11	2.29	2.16
Communication	1.74	11.23	3.04	0.31
Recreation and Culture	-0.24	-1.26	3.65	2.61
Education	0.23	0.23	0.00	-4.41
Restaurants and Hotels	0.15	-1.04	9.29	-6.56
Miscellaneous Goods and Services	17.80	-1.87	19.28	1.05

Source: Statistics Department, Ministry of Finance and Economic Management (MoFEM), MONTSEERRAT.

Table 4.7 – Annual Inflation Rates by Major Expenditure/Category (End of Period %): 2019 – 2022

Category	2019	2020	2021	2022
<b>All Items</b>	<b>-0.58</b>	<b>-2.99</b>	<b>5.17</b>	<b>-1.24</b>
Food and Non-Alcoholic Beverages	2.02	2.05	1.63	-1.02
Alcohol Beverages, Tobacco and Narcotics	9.89	2.37	-11.73	-0.87
Clothing and Footwear	1.80	0.73	10.86	6.27
Housing, Water, Electricity, Gas, and Other Fuels	-0.85	-3.71	5.07	-7.37
Furnishing, Household Equipment and Routine HH M'tce	4.19	-4.35	6.48	-1.92
Health	-0.00	0.16	0.77	0.90
Transport	0.85	-3.56	3.37	7.03
Communication	1.86	-11.05	6.95	1.00
Recreation and Culture	0.68	-0.05	3.17	0.35
Education	-0.17	0.91	-	-3.90
Restaurants and Hotels	0.53	-1.91	9.39	-7.01
Miscellaneous Goods and Services	-22.47	-5.66	28.3	-2.17

Source: Statistics Department, Ministry of Finance and Economic Management (MoFEM), MONTSEERRAT.



Table 4.8 – Monthly Inflation to Date 2022 from 2019

Category	Jan	Feb	Mar	Apr	May	Jun	Jul	Aug	Sep	Oct	Nov	Dec
<b>All Items</b>	<b>3.07</b>	<b>2.89</b>	<b>2.76</b>	<b>4.11</b>	<b>4.25</b>	<b>5.16</b>	<b>5.42</b>	<b>6.27</b>	<b>-1.05</b>	<b>0.74</b>	<b>1.10</b>	<b>0.76</b>
Food and Non-Alcoholic Beverages	4.54	4.57	5.20	6.12	6.94	7.61	10.03	9.75	-1.04	0.76	1.14	2.43
Alcohol Beverages, Tobacco and Narcotics	4.91	4.94	5.33	4.43	0.17	4.99	5.40	5.57	0.63	1.24	-2.54	1.32
Clothing and Footwear	4.83	4.83	4.83	6.06	6.00	5.77	8.54	8.44	-0.37	2.57	2.57	2.57
Housing, Water, Electricity, Gas, and Other Fuels	4.40	3.86	3.17	6.83	7.07	9.45	7.59	10.34	-2.04	-3.35	-2.26	-3.83
Furnishing, Household Equipment and Routine HH M'tce	-1.80	-1.71	-1.80	0.31	0.04	0.17	-3.12	-3.18	-0.49	0.20	0.23	0.22
Health	4.77	4.77	4.77	4.10	4.10	4.10	0.71	0.71	-0.37	8.84	8.84	8.84
Transport	1.58	1.69	1.82	1.99	1.89	1.94	6.48	6.57	-0.51	8.57	8.49	8.62
Communication	3.00	3.00	3.00	-0.20	-0.20	-0.20	-2.63	-2.63	-0.37	1.15	1.15	1.15
Recreation and Culture	1.13	0.88	0.88	2.30	2.30	2.27	4.67	4.65	-0.37	0.54	0.54	-0.44
Education	-0.37	-0.37	-0.37	-0.37	-0.37	-0.37	-0.37	-0.37	-0.37	0.28	0.28	0.28
Restaurants and Hotels	-0.33	-0.42	-0.42	3.06	3.06	3.06	4.82	4.82	-0.37	1.32	1.32	1.32
Miscellaneous Goods and Services	3.31	3.09	2.73	2.99	2.89	3.52	4.59	4.61	-0.54	-0.29	-1.02	-0.92

Source: Statistics Department, Ministry of Finance and Economic Management (MoFEM), MONTSERRAT.

Table 4.9 – Average Price of Selected Household Items 2019 – 2022

Items	UoM	2019		2020		2021		2022	
		June	Dec	June	Dec	June	Dec	June	Dec
Corned Beef	340g	6.98	6.98	7.08	7.50	7.65	7.28	8.26	9.94
Chicken Wings	lb	5.84	5.84	6.00	6.16	5.97	6.30	6.76	6.75
Turkey Wings	lb	5.00	5.00	5.00	5.25	6.17	6.71	7.10	7.79
Chicken Drumsticks	lb	8.09	8.59	11.32	11.32	9.94	6.77	9.17	7.71
Rice (Long grain)	5 lb	9.77	10.57	10.70	10.72	10.44	12.29	12.73	12.78
Flour	2 kg	8.93	8.71	8.55	8.69	9.33	9.08	9.85	10.92
Saltfish	lb	15.68	15.62	15.96	16.50	16.58	16.61	19.30	20.87
Margarine/Butter	445g	6.82	6.16	6.09	5.85	7.80	8.21	8.59	10.53
Evaporated Milk	410g	3.56	3.56	3.63	3.59	3.76	3.99	4.32	4.21
Canned Tuna	142g	3.72	3.79	3.99	4.07	4.21	4.18	4.07	4.32
Eggs	dz	15.04	15.21	14.87	15.27	15.13	15.59	19.56	18.53
Vegetable oil	48 floz	13.02	13.65	13.60	12.90	20.77	32.63	28.84	35.37
Salt	26oz	2.75	2.82	2.75	3.00	3.32	3.04	3.14	3.51
Beer (hot)	250ml	4.23	4.17	4.17	4.24	4.61	4.54	4.69	4.78
Aerated Beverage	12 oz	2.74	2.82	2.82	3.04	4.14	4.07	4.21	4.40
White Potatoes	lb	3.34	3.57	3.53	3.58	3.52	3.86	4.67	5.69
Grapes	lb	13.10	12.76	12.92	13.15	13.49	14.64	16.00	15.64
Tomatoes	lb	9.38	9.89	10.21	10.15	9.54	11.32	9.61	11.58
Onion	lb	4.00	3.95	4.00	4.00	4.45	4.30	4.96	5.89
Powdered Soap	1 kg	8.82	8.86	8.86	9.14	9.31	9.81	9.85	9.80
Brown Sugar	lb	1.53	1.51	1.56	1.56	1.77	2.08	2.08	2.08
Water Rates per 100 gal	1000 gal	18.00	18.00	18.00	18.00	18.00	18.00	18.00	18.00
Electricity for 100kwh	100 kwh	119.75	113.75	95.75	92.75	113.75	119.75	160.75	140.75

Source: Statistics Department, Ministry of Finance and Economic Management (MoFEM), MONTserrat.

## Labour Force

Table 5.1 – Labour Force Survey Key Findings – 2020

Indicators	Male	Female	Total
Labour Force	14,06	1,321	2,727
Employed	1,255	1,234	2,489
Unemployed	151	87	238
Unemployment Rate	10.7	6.6	8.7

Source: Labour Force Survey, September 2020

\*Labour Force - Persons who: 1. Had a job but did not work 2. Worked 3. looked for work 4. Wanted work and was available

Table 5.2 – Labour Force by Age and Sex – 2020

Age Group	Male	Female	Total
15-19	58	23	81
20-24	124	98	222
25-29	152	125	277
30-34	135	180	315
35-39	114	166	280
40-44	147	164	311
45-49	150	161	311
50-54	178	170	348
55-59	161	108	269
60-64	79	57	136
65-69	62	49	111
70-74	34	17	51
75-79	12	3	15
<b>Total</b>	<b>1,406</b>	<b>1,321</b>	<b>2,727</b>

Source: Labour Force Survey, September 2020

Table 5.3 – Employment Population by Sex Age Group – 2020

Age Group	Males	Female	Total
15-19	48	14	62
20-24	99	77	177
25-29	130	118	248
30-34	129	176	305
35-39	111	150	261
40-44	129	152	281
45-49	140	154	295
50-54	153	162	315
55-59	155	104	258
60-64	62	57	120
65-69	52	49	100
70-74	34	17	51
75-79	12	3	15
<b>Total</b>	<b>1,255</b>	<b>1,234</b>	<b>2,489</b>

Source: Labour Force Survey, September 2020

Table 5.4 – Employment by Occupational Grouping and Sex – 2020

Occupation Grouping	Male	Female	Total
Managers	117	117	234
Professionals	109	214	323
Technicians and Associate Professionals	207	183	390
Clerical support workers	57	171	228
Service and sales workers	236	340	576
Skilled agricultural, forestry and fishery workers	64	0	64
Craft and related trades workers	215	28	243
Plant and Machine Operators and Assemblers	95	0	95
Elementary Occupations	156	181	337
<b>Total</b>	<b>1,255</b>	<b>1,235*</b>	<b>2,490*</b>

Source: Labour Force Survey, September 2020

\*figure varies due to rounding

Table 5.5 – Labour Force Participation Rate by Sex and Age Group – 2020

Age Group	Male	Female	Total
15-24 (Youth)	70.16	46.47	58.32
25-34	92.12	94.05	93.10
35-44	93.12	96.43	94.94
45-54	96.21	92.03	94.06
55-64	73.11	61.14	67.69
65+ (Elderly)	26.24	17.84	22.15

Source: Labour Force Survey, September 2020

Figure 2 - Labour Force Participation Rate by Age Group and Sex 2020



## Construction

Table 6.1 – Construction Activity EC\$M (monthly) 2019

Month	NEW						ADDITIONS/RENOVATIONS					
	Residential		Commercial		Public		Residential		Commercial		Public	
	No	Cost	No	Cost	No	Cost	No	Cost	No	Cost	No	Cost
Jan	2	0.85	0	0.00	0	0.00	2	0.51	0	0.00	0	0.00
Feb	0	0.00	0	0.00	0	0.00	2	1.30	0	0.00	0	0.00
Mar	6	2.86	0	0.00	0	0.00	2	0.43	1	0.07	0	0.00
Apr	5	2.56	0	0.00	0	0.00	1	0.25	0	0.00	0	0.00
May	0	0.00	0	0.00	0	0.00	1	0.07	0	0.00	0	0.00
Jun	2	2.30	0	0.00	0	0.00	0	0.00	1	0.70	0	0.00
Jul	1	0.42	2	4.12	0	0.00	1	0.15	0	0.00	0	0.00
Aug	1	0.42	0	0.00	0	0.00	1	0.05	0	0.00	0	0.00
Sep	2	0.91	2	0.70	0	0.00	1	0.15	0	0.00	0	0.00
Oct	1	0.34	0	0.00	0	0.00	0	0.00	0	0.00	0	0.00
Nov	4	1.20	0	0.00	0	0.00	0	0.00	0	0.00	0	0.00
Dec	1	0.95	0	0.00	0	0.00	0	0.00	0	0.00	0	0.00
<b>Total</b>	<b>25</b>	<b>12.79</b>	<b>4</b>	<b>4.82</b>	<b>0</b>	<b>0.00</b>	<b>11</b>	<b>2.89</b>	<b>2</b>	<b>0.77</b>	<b>0</b>	<b>0.00</b>

Source: Physical Planning Unit

Table 6.2 – Construction Activity EC\$M (monthly) 2020

Month	NEW						ADDITIONS/RENOVATIONS					
	Residential		Commercial		Public		Residential		Commercial		Public	
	No	Cost	No	Cost	No	Cost	No	Cost	No	Cost	No	Cost
Jan	2	0.93	0	0.00	0	0.00	2	0.74	0	0.00	0	0.00
Feb	1	0.28	0	0.00	0	0.00	4	0.50	0	0.00	0	0.00
Mar	0	0.00	0	0.00	0	0.00	0	0.00	0	0.00	0	0.00
Apr	0	0.00	0	0.00	0	0.00	0	0.00	0	0.00	0	0.00
May	0	0.00	0	0.00	0	0.00	0	0.00	0	0.00	0	0.00
Jun	6	1.92	0	0.00	0	0.00	1	0.17	0	0.00	0	0.00
Jul	1	0.27	1	0.15	0	0.00	0	0.00	0	0.00	0	0.00
Aug	2	0.49	0	0.00	0	0.00	3	0.36	0	0.00	0	0.00
Sep	1	0.25	0	0.00	0	0.00	0	0.00	0	0.00	0	0.00
Oct	0	0.00	1	0.85	0	0.00	2	0.51	0	0.00	0	0.00
Nov	0	0.00	0	0.00	0	0.00	1	0.08	0	0.00	0	0.00
Dec	2	0.57	4	0.17	0	0.00	0	0.00	0	0.00	0	0.00
<b>Total</b>	<b>15</b>	<b>4.71</b>	<b>6</b>	<b>1.17</b>	<b>0</b>	<b>0.00</b>	<b>13</b>	<b>2.35</b>	<b>0</b>	<b>0.00</b>	<b>0</b>	<b>0.00</b>

Source: Physical Planning Unit

Table 6.3 – Construction Activity EC\$M (monthly) 2021

Month	NEW						ADDITIONS/RENOVATIONS					
	Residential		Commercial		Public		Residential		Commercial		Public	
	No	Cost	No	Cost	No	Cost	No	Cost	No	Cost	No	Cost
Jan	1	0.56	1	8.90	0	0.00	1	0.12	0	0.00	0	0.00
Feb	0	0.00	0	0.00	0	0.00	1	0.06	0	0.00	0	0.00
Mar	4	1.22	0	0.00	0	0.00	4	0.60	0	0.00	0	0.00
Apr	1	0.25	1	0.06	0	0.00	0	0.00	0	0.00	0	0.00
May	2	0.53	1	1.20	0	0.00	4	0.41	0	0.00	0	0.00
Jun	2	0.68	0	0.00	0	0.00	2	0.39	0	0.00	0	0.00
Jul	2	1.04	0	0.00	0	0.00	0	0.00	0	0.00	0	0.00
Aug	2	0.64	0	0.00	0	0.00	1	0.12	0	0.00	0	0.00
Sep	3	1.22	1	3.90	0	0.00	2	0.46	0	0.00	0	0.00
Oct	2	1.37	0	0.00	0	0.00	0	0.00	0	0.00	0	0.00
Nov	1	0.20	0	0.00	0	0.00	0	0.00	0	0.00	0	0.00
Dec	0	0.00	0	0.00	0	0.00	0	0.00	0	0.00	0	0.00
<b>Total</b>	<b>20</b>	<b>7.71</b>	<b>4</b>	<b>14.06</b>	<b>0</b>	<b>0.00</b>	<b>15</b>	<b>2.14</b>	<b>0</b>	<b>0.00</b>	<b>0</b>	<b>0.00</b>

Source: Physical Planning Unit

Table 6.4 – Construction Activity EC\$M (monthly) 2022

Month	NEW						ADDITIONS/RENOVATIONS					
	Residential		Commercial		Public		Residential		Commercial		Public	
	No	Cost	No	Cost	No	Cost	No	Cost	No	Cost	No	Cost
Jan	0	0.00	0	0.00	0	0.00	0	0.00	0	0.00	0	0.00
Feb	2	0.91	0	0.00	0	0.00	0	0.00	2	0.83	0	0.00
Mar	3	0.51	2	0.93	0	0.00	0	0.00	0	0.00	0	0.00
Apr	0	0.00	1	0.18	0	0.00	1	0.06	0	0.00	0	0.00
May	1	0.74	0	0.00	0	0.00	0	0.00	0	0.00	0	0.00
Jun	0	0.00	0	0.00	0	0.00	0	0.00	0	0.00	0	0.00
Jul	0	0.00	0	0.00	0	0.00	0	0.00	0	0.00	0	0.00
Aug	0	0.00	0	0.00	0	0.00	0	0.00	0	0.00	0	0.00
Sep	2	0.66	0	0.00	0	0.00	0	0.00	0	0.00	0	0.00
Oct	2	2.15	1	0.03	0	0.00	0	0.00	0	0.00	0	0.00
Nov	1	0.44	0	0.00	0	0.00	0	0.00	0	0.00	0	0.00
Dec	3	0.83	0	0.00	0	0.00	0	0.00	0	0.00	0	0.00
<b>Total</b>	<b>14</b>	<b>6.24</b>	<b>4</b>	<b>1.14</b>	<b>0</b>	<b>0.00</b>	<b>1</b>	<b>0.06</b>	<b>2</b>	<b>0.83</b>	<b>0</b>	<b>0.00</b>

Source: Physical Planning Unit

## Transport and Communication

Table 7.1 – Number of Accidents (monthly) 2019 – 2022

Month	2019	2020	2021	2022
January	8	13	9	10
February	8	9	4	9
March	19	14	8	10
April	8	3	11	8
May	9	7	7	4
June	10	11	10	6
July	4	7	6	5
August	13	12	7	7
September	8	15	9	4
October	15	6	11	11
November	6	10	13	6
December	18	14	8	9
<b>Total</b>	<b>126</b>	<b>121</b>	<b>103</b>	<b>89</b>

Source: Royal Montserrat Police Services (RMPS)

Table 7.2 – Day of Accidents 2019 – 2022

Day of the Week	2019	2020	2021	2022
Monday	15	24	11	12
Tuesday	13	22	12	5
Wednesday	17	10	13	11
Thursday	19	12	14	22
Friday	18	20	21	15
Saturday	27	19	18	10
Sunday	17	14	14	14
<b>Total</b>	<b>126</b>	<b>121</b>	<b>103</b>	<b>89</b>

Source: Royal Montserrat Police Services (RMPS)



Table 7.3 – Accidents by Area 2019 – 2022

Area	2019	2020	2021	2022
Baker Hill	1	2	0	0
Banks	0	1	0	1
Barzey's	1	3	0	4
Brades	33	27	24	12
Carr's Bay	5	7	4	3
Cavalla Hill	0	1	0	1
Cheap End	0	1	0	1
Cudjoe Head	6	4	0	3
Davy Hill	9	8	6	10
Dick Hill	1	0	0	0
Drummonds	0	1	1	0
Flemmings	1	0	0	0
Forgarthy Hill	2	3	2	1
Friths	0	0	1	1
Geralds	4	2	5	7
Happy Hill	0	1	0	0
Hope	1	0	2	1
Isles Bay	0	0	1	0
Jones Hill	0	0	1	0
Judy Piece	1	1	0	0
Lawyer's Mountain	0	0	0	1
Little Bay	7	3	8	5
Look Out	2	5	3	6
Lovers Lane	0	0	1	0
Lower Friths	0	0	1	0
Manjack	0	2	1	1
Mongo Hill	1	1	0	0
Old Road	0	0	0	0
Old Towne	1	0	0	2
Olveston	2	0	1	1
Plymouth	0	0	1	0
Pump Ghaut	2	3	0	0
Runaway Ghaut	1	0	0	1
Salem	9	11	14	6
Salt Spring	0	4	0	0
St John's	14	10	8	10
St Peter's	10	3	4	1
Soldier Ghaut	0	1	1	0
Sweeney's	8	10	7	6
Virgin Islands	0	0	0	2
Woodlands	4	5	6	2
Yellow Hill	0	1	0	0
<b>Total</b>	<b>126</b>	<b>121</b>	<b>103</b>	<b>89</b>

Source: Royal Montserrat Police Services (RMPS)

Table 7.4 – Number of Vehicles Registered 2019 – 2022

Type	Category	2019	2020	2021	2022
Regular	M (Private)	2,428	2,429	2,475	2,481
	H (Hire)	163	177	173	170
	R (Rental)	226	196	169	171
	G (Government)	91	96	85	90
	<b>Total</b>	<b>2,908</b>	<b>2,898</b>	<b>2,902</b>	<b>2,912</b>
New	M (Private)	189	187	227	162
	H (Hire)	18	17	21	7
	R (Rental)	22	22	24	13
	G (Government)	4	3	3	4
	<b>Total</b>	<b>233</b>	<b>229</b>	<b>275</b>	<b>186</b>
Total	M (Private)	2,617	2,616	2,702	2,463
	H (Hire)	181	194	194	177
	R (Rental)	248	218	193	184
	G (Government)	95	99	88	94
	<b>Total</b>	<b>3,141</b>	<b>3,127</b>	<b>3,177</b>	<b>3,098</b>

Source: Ministry of Communications, Works and Labour – Traffic Department

Table 7.5 – New Vehicles Registered by type 2019 – 2022

Type of Vehicle	2019	2020	2021	2022
Cars	88	97	112	76
Pickup	26	19	27	21
Omnibus	17	8	10	7
Jeep	82	79	96	65
Lorries	6	3	4	1
Dump Truck	9	10	8	2
Tankers	0	1	1	0
Tow Tractors	1	0	1	0
Loaders (Mini)	0	0	0	0
Loaders (Large)	0	0	2	2
Graders	0	0	0	0
Rough Riders	1	1	0	0
Backhoes	0	0	1	1
Forklifts	0	0	4	0
Mokes	0	0	0	1
Motorcycle	3	7	7	2
Tractors	0	1	1	0
Road Rollers	0	0	0	0
Vans	0	3	1	8
<b>Total</b>	<b>233</b>	<b>229</b>	<b>275</b>	<b>186</b>

Source: Ministry of Communications, Works and Labour – Traffic Department

Table 7.6 – Cargo Landed and Loaded Tonnage (monthly) 2019 – 2022

Month	Landed				Loaded			
	2019	2020	2021	2022	2019	2020	2021	2022
January	2,539	2,585	2,142	2,081	28,911	14,789	25,892	35,180
February	2,788	2,683	1,773	5,749	35,951	44,407	23,876	30,347
March	2,844	4,522	6,157	3,640	28,335	46,874	42,820	32,769
April	3,632	1,765	3,559	2,042	47,662	25	50,122	38,942
May	2,467	1,772	2,118	2,476	33,641	27,554	33,968	62,523
June	2,600	2,563	2,825	2,283	33,700	52,557	46,093	32,720
July	4,000	2,066	4,548	2,940	46,317	36,960	42,179	49,683
August	2,315	2,655	1,861	3,591	40,952	41,951	53,361	45,710
September	1,882	3,716	3,521	2,148	21,117	36,512	41,566	25,569
October	5,403	3,023	2,445	2,282	29,026	41,740	37,107	40,037
November	3,202	2,464	3,408	3,701	38,157	33,785	54,637	33,372
December	3,145	4,730	3,788	3,330	23,101	46,241	41,402	38,019
<b>Total</b>	<b>36,817</b>	<b>34,543</b>	<b>38,146</b>	<b>36,262</b>	<b>406,872</b>	<b>423,396</b>	<b>493,022</b>	<b>464,871</b>

Source - Montserrat Port Authority

Table 7.7 – Vehicle Imports (monthly) 2019 – 2022

Month	2019	2020	2021	2022
January	12	11	12	10
February	7	2	7	1
March	10	9	10	16
April	8	16	14	4
May	11	8	7	4
June	7	9	10	10
July	13	5	11	4
August	7	8	2	13
September	17	6	22	1
October	6	11	10	3
November	4	4	8	9
December	6	12	6	1
<b>Total</b>	<b>108</b>	<b>101</b>	<b>119</b>	<b>76</b>

Source - Montserrat Port Authority  
 Figures not inclusive of heavy equipment

Table 7.8 – Vehicle Imports by Type 2019 – 2022

Type	2019	2020	2021	2022
Cars	78	92	107	63
Trucks/ Pick-up	3	6	12	13
Lift on/Lift off	27	3	0	0
<b>Total</b>	<b>108</b>	<b>101</b>	<b>119</b>	<b>76</b>

Source - Montserrat Port Authority

Note: figures not inclusive of heavy equipment

Table 7.9 – Passenger Arrivals by Mode (monthly) 2019 – 2022

Month	Period/ Mode of Transport							
	2019		2020		2021		2022	
	Sea	Air	Sea	Air	Sea	Air	Sea	Air
January	767	613	660	644	0	146	0	244
February	919	572	813	546	0	102	0	309
March	2,863	945	2,322	688	0	105	0	422
April	967	486	6	1	0	150	0	400
May	905	435	1	5	0	160	2	442
June	1,021	468	1	23	0	213	2	626
July	910	393	0	61	0	292	3	680
August	1,551	482	0	137	0	304	5	898
September	693	372	0	104	0	240	0	584
October	937	409	0	124	0	252	1	703
November	814	595	0	124	0	310	1	743
December	1,754	654	0	230	0	489	2	1286
<b>Total</b>	<b>14,101</b>	<b>6,424</b>	<b>3,803</b>	<b>2,687</b>	<b>0</b>	<b>2,763</b>	<b>16</b>	<b>7,337</b>

Source – Integrated Border Security Unit and Statistics Department, Ministry of Finance and Economic Management (MoFEM), MONTSERAT.

Table 7.10 – Passenger Departures by Mode (monthly) 2019 – 2022

Month	Period / Mode of Transport							
	2019		2020		2021		2022	
	Sea	Air	Sea	Air	Sea	Air	Sea	Air
January	865	856	730	915	0	165	0	340
February	786	647	600	595	0	99	6	239
March	2,439	1,212	1,866	1,153	0	121	0	520
April	1,083	714	0	6	0	172	0	567
May	789	540	1	61	0	182	2	487
June	997	508	0	60	0	248	1	644
July	1,038	519	0	71	0	345	3	751
August	1,364	559	1	226	0	389	0	857
September	574	481	1	158	0	309	1	683
October	823	391	0	116	0	206	0	660
November	655	685	0	99	0	226	1	652
December	1,304	630	0	147	0	315	0	766
<b>Total</b>	<b>12,717</b>	<b>7,742</b>	<b>3,199</b>	<b>3,607</b>	<b>0</b>	<b>2,777</b>	<b>14</b>	<b>7,166</b>

Source – Integrated Border Security Unit

# Tourism

Figure 3 - Visitor Arrivals by Type 2022



Table 8.1 – Tourism Statistics 2019 – 2022

	2019R	2020R	2021	2022R
<b><u>Total Visitors Arrivals (all types)</u></b>	<b><u>18,583</u></b>	<b><u>7,001</u></b>	<b><u>1,597</u></b>	<b><u>5,906</u></b>
Air	4,326	1,981	1,597	4,695
Sea	14,257	5,020	0	1,211
<b><u>Visitor Arrivals (Tourists and Excursionists)</u></b>	<b><u>12,502</u></b>	<b><u>4,869</u></b>	<b><u>1,597</u></b>	<b><u>4,713</u></b>
Air	4,326	1,981	1,597	4,695
Sea	8,176	2,888	0	18
<b><u>Tourists</u></b>	<b><u>10,402</u></b>	<b><u>4,544</u></b>	<b><u>1,591</u></b>	<b><u>4,613</u></b>
Air	3,996	1,909	1,591	4,595
Sea	6,406	2,635	0	18
<b><u>Excursionists</u></b>	<b><u>2,100</u></b>	<b><u>325</u></b>	<b><u>6</u></b>	<b><u>100</u></b>
Air	330	72	6	100
Sea	1,770	253	0	0
<b><u>Ferry Day Trippers</u></b>	<b><u>611</u></b>	<b><u>0</u></b>	<b><u>0</u></b>	<b><u>0</u></b>
Sea	611	0	0	0
<b><u>Cruise Passengers</u></b>	<b><u>3,817</u></b>	<b><u>1,506</u></b>	<b><u>0</u></b>	<b><u>887</u></b>
Sea	3,817	1,506	0	887
<b><u>Yacht Passengers &amp; Crew</u></b>	<b><u>1,653</u></b>	<b><u>626</u></b>	<b><u>0</u></b>	<b><u>306</u></b>
Sea	1,653	626	0	306

Source: Statistics Department, Ministry of Finance and Economic Management (MoFEM), MONTSERRAT.

Note to our readers:

A tourist (also called a stay over arrival) is defined as a temporary visitor staying in a place outside their usual place of residence, for a continuous period of at least 24 hours but less than one year, for leisure, business or other purposes (World Tourism Organization).

An excursionist is defined as someone who does not overnight in the country visited (stays less than 24 hours).

Ferry day trippers are also regarded as excursionists but they are separated in this instance as there is no available disaggregated data about these persons for reporting purposes.

Cruise passenger arrivals have been revised for 2019 & 2020. As such, the total visitor arrivals for both 2019 and 2020 have been revised.

Yacht arrivals include both passengers & crew. In many instances, yachts anchor at our shores with only crew members who do disembark and therefore have been included in these counts.

Table 8.2 – Tourist (Stay-over) Arrivals by Country of Origin 2019 – 2022

Country of Origin	2019	2020	2021	2022
OECS	2,854	795	131	627
Rest CARICOM	677	225	134	306
Rest Caribbean	474	151	69	174
USA	2,641	1,309	543	1,484
Canada	542	284	84	240
Latin America	69	15	10	7
United Kingdom	2,825	1,630	563	1,640
Rest Europe	250	90	33	96
Other	70	45	24	39
<b>Total</b>	<b>10,402</b>	<b>4,544</b>	<b>1,591</b>	<b>4,613</b>

Source: Statistics Department, Ministry of Finance and Economic Management (MoFEM), MONTSERRAT

Figure 4 - Tourist Arrivals by Country of Origin over 4-year period 2019 -2022.

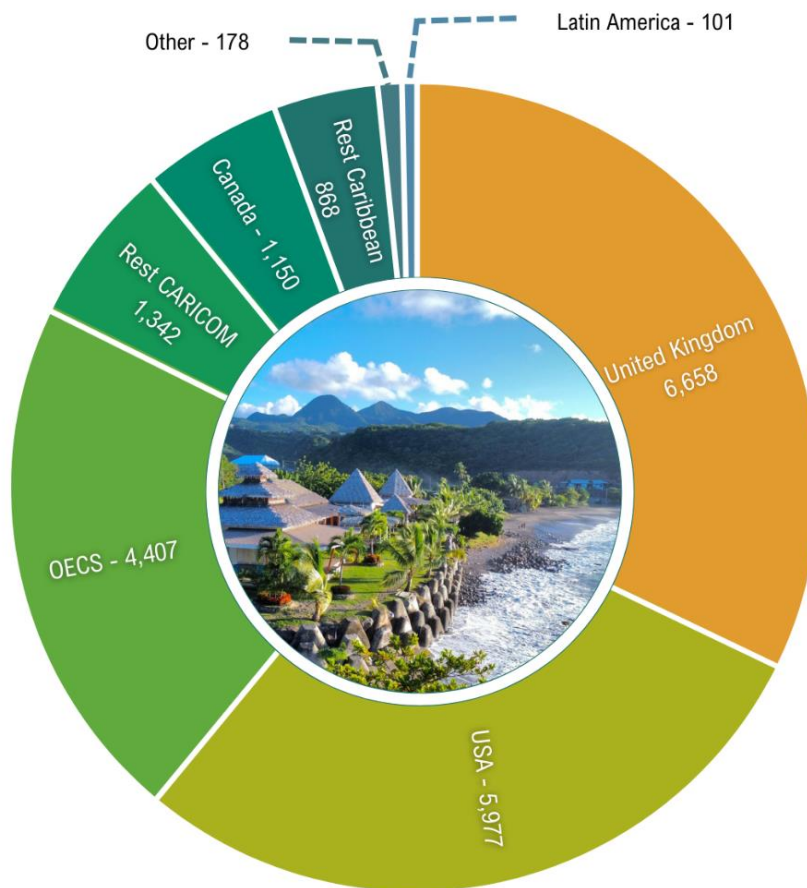


Photo Credit: D'Jhari Daly



Table 8.3 – Excursionist (Same day) Arrivals by Country of Origin 2019 – 2022

Country of Origin	2019	2020	2021	2022
OECS	882	77	3	42
Rest CARICOM	77	7	0	0
Rest Caribbean	22	9	2	3
USA	369	101	1	26
Canada	149	59	0	3
Latin America	16	1	0	0
United Kingdom	405	31	0	22
Rest Europe	107	35	0	3
Other	73	5	0	1
<b>Total</b>	<b>2,100</b>	<b>325</b>	<b>6</b>	<b>100</b>

Source: Statistics Department, Ministry of Finance and Economic Management (MoFEM), MONTSERRAT

Table 8.4 – Visitor Arrivals (monthly) 2019 – 2022

Month	2019		2020		2021		2022	
	Tourists	Excursionist	Tourist	Excursionist	Tourist	Excursionist	Tourist	Excursionist
January	620	188	763	106	79	1	136	1
February	726	274	766	111	49	0	213	0
March	2,955	260	2,568	100	68	1	265	1
April	541	287	0	0	96	0	233	5
May	508	156	2	0	97	0	251	15
June	668	144	8	3	133	1	352	14
July	637	90	38	1	175	0	444	11
August	681	150	72	2	129	1	541	13
September	485	53	54	0	95	2	310	4
October	612	59	58	0	139	0	425	5
November	670	115	66	0	176	0	402	27
December	1299	324	149	2	355	0	1,041	4
<b>Total</b>	<b>10,402</b>	<b>2,100</b>	<b>4,544</b>	<b>325</b>	<b>1,591</b>	<b>6</b>	<b>4,613</b>	<b>100</b>

Source: Statistics Department, Ministry of Finance and Economic Management (MoFEM), MONTSERRAT

Table 8.5 – Visitor Arrivals by Mode of Entry (monthly) 2019 – 2022

Month	2019		2020		2021		2022	
	Air	Sea	Air	Sea	Air	Sea	Air	Sea
January	416	392	501	368	80	0	137	0
February	394	606	426	451	49	0	213	0
March	740	2475	601	2067	69	0	266	0
April	312	516	0	0	96	0	238	0
May	259	405	1	1	97	0	264	2
June	252	560	10	1	134	0	364	2
July	256	471	39	0	175	0	449	6
August	303	528	74	0	130	0	549	5
September	240	298	54	0	97	0	314	0
October	272	399	58	0	139	0	429	1
November	404	381	66	0	176	0	429	0
December	478	1145	151	0	355	0	1,043	2
<b>Total</b>	<b>4,326</b>	<b>8,176</b>	<b>1,981</b>	<b>2,888</b>	<b>1,597</b>	<b>0</b>	<b>4,695</b>	<b>18</b>

Source: Statistics Department, Ministry of Finance and Economic Management (MoFEM), MONTSERRAT

Table 8.6 – Cruise Passenger Arrivals (monthly) and Cruise Calls 2019 - 2022

Month	2019R	2020R	2021	2022
<b># of Cruise Calls</b>	<b>22</b>	<b>9</b>	<b>0</b>	<b>2</b>
January	802	780	0	0
February	640	530	0	0
March	778	196	0	0
April	162	0	0	0
May	0	0	0	0
June	0	0	0	0
July	0	0	0	0
August	0	0	0	0
September	0	0	0	0
October	0	0	0	355
November	414	0	0	0
December	1,021	0	0	532
<b>Total</b>	<b>3,817</b>	<b>1,506</b>	<b>0</b>	<b>887</b>

Source: Montserrat Port Authority

Table 8.7 – Yacht Arrivals and Calls (monthly) 2019 – 2022

Month	2019		2020		2021		2022	
	Arrivals	Calls	Arrivals	Calls	Arrivals	Calls	Arrivals	Calls
January	192	51	139	36	0	0	0	0
February	154	55	280	79	0	0	0	0
March	239	103	205	96	0	0	0	0
April	225	77	0	0	0	0	0	0
May	117	33	2	1	0	0	0	0
June	70	17	0	0	0	0	6	2
July	96	30	0	0	0	0	1	9
August	20	6	0	0	0	0	31	8
September	4	2	0	0	0	0	4	1
October	21	8	0	0	0	0	29	5
November	144	28	0	0	0	0	71	13
December	371	35	0	0	0	0	164	24
<b>Total</b>	<b>1,653</b>	<b>445</b>	<b>626</b>	<b>212</b>	<b>0</b>	<b>0</b>	<b>306</b>	<b>62</b>

Source: Montserrat Port Authority

## Agriculture and Fishing

Table 9.1 – Agricultural Production (lbs) 2019 – 2022

Description	2019	2020	2021	2022
Banana	15,378	17,228	19,444	14,021
Bora	-	37	-	549
Breadfruit	952	1,566	6,799	3,759
Broccoli	65	302	535	387
Cabbage	10,811	10,338	16,265	1,717
Carrots	7,321	568	6,985	2,117
Cassava	2,116	1,173	3,331	4,342
Cauliflower	-	218	298	34
Chive	184	305	496	-
Christophene	-	378	903	458
Corn	200	90	480	1,018
Cucumber	1,650	2,442	4,277	6,045
Dasheen	3,268	2,074	1,658	1,848
Egg Plant	1,330	913	2,081	2,845
Ginger	-	-	1,145	139
Hot Pepper	40	167	359	630
Lettuce	3,195	5,108	2,466	3,430
Limes	499	646	950	737
Okra	1,320	2,594	1,500	2,352
Onions	3,067	8,467	12,750	3,256
Pachoi	370	953	1,128	1,108
Papaya	506	171	175	1,220
Pineapple	2,016	1,167	1,820	1,917
Plantain	10,583	13,526	13,633	10,845
Pumpkin	3,608	4,008	6,347	3,549
Seasoning Pepper	3,327	2,610	3,623	4,381
Sorrel	350	1,014	2,140	1,036
Spinach	243	233	729	935
Squash	-	-	618	873
String Beans	1,094	2,642	2,279	1,613
Sweet Pepper	1,195	2,004	3,421	2,653
Sweet Potato	16,194	5,442	17,875	12,348
Tomato	1,147	1,058	4,484	3,250
Trible	-	-	-	708
White Potato	-	-	-	18,817
Water Melon	107	1,656	2,681	1,647
Yams	590	1,103	998	145
Coralle	50	30	50	251
Avocado	1,170	1,736	3,227	2,227
Haitie	1,441	2,765	4,777	5,052
Thyme	-	60	341	308
<b>Total</b>	<b>95,387</b>	<b>96,792</b>	<b>153,068</b>	<b>124,567</b>

Source: Ministry of Agriculture, Lands, Housing and the Environment

Table 9.2 – Agricultural Imports (lbs) 2019 – 2022

Description	2019	2020	2021	2022
Bora	40	66	-	-
Broccoli	12,945	15,686	11,950	10,101
Cabbages	26,901	33,757	29,113	36,471
Cantaloupes	5,886	4,622	4,096	4,258
Carrots	37,974	46,906	41,828	41,603
Cassava	5,197	7,170	7,867	7,167
Cauliflowers	4,927	4,752	3,938	3,940
Christophine	5,711	3,344	5,348	7,726
Corn	2,060	2,451	3,148	1,742
Cucumbers	14,280	14,629	18,775	21,109
Dasheens	31,020	20,759	23,298	26,206
Eggplant (Aubergines)	5,300	4,616	6,070	4,768
Ginger	7,286	8,147	8,195	11,187
Lemons	15	-	-	57
Lettuce	7,813	4,893	1,929	1,652
Limes	220	211	1,509	1,606
Okra (Ochroes)	194	483	433	-
Onions	83,342	73,752	71,636	78,682
Oranges	1,414	2,979	2,367	4,884
Passion Fruit	2,224	3,718	5,306	3,989
Pawpaws	106	-	-	854
Peanuts	3,789	3,865	858	-
Pineapples	6,929	5,322	9,495	9,535
Pumpkin	20,475	17,257	11,497	18,313
Seasoning Peppers and hot peppers	5,504	4,640	5,047	5,898
Spinach	2,149	2,455	2,673	2,235
Spring onions, Chibble and chive	673	1,078	1,877	1,456
Squash, Sorrel and pachoi	14,945	16,985	3,322	-
Sweet Peppers	-	22	-	-
Sweet Potatoes	28,860	30,920	29,292	27,254
Tannias	41,329	30,349	31,825	33,559
Thyme	5,801	3,601	11,451	12,005
Tomatoes	1,247	543	887	1,342
Watermelons	17,678	18,142	14,397	13,862
White Potatoes	18,930	19,065	27,850	25,326
Yams	134,031	134,833	137,923	121,371
<b>Total</b>	<b>577,433</b>	<b>557,973</b>	<b>540,601</b>	<b>540,159</b>

Source: Customs And Revenue Services, Prepared by Statistics Department, Ministry of Finance and Economic Management (MoFEM)

Table 9.3 – Fish Landings (lbs) 2019 – 2022

Type of Fish	2019	2020	2021	2022
<b>Total Reef Fish - Demersals</b>	<b>21,972</b>	<b>16,650</b>	<b>23,244</b>	<b>17,492</b>
Other Demersals/Reef Fish	20,397	15,481	21,504	16,401
Demersal/Reef Fish - Shell Fish	1,180	1,067	1,540	1,020
Demersal Lion	395	102	199	71
Ocean Pelagics	3,220	1,916	1,999	2,429
Coastal Pelagics	12,134	13,155	15,898	13,193
Shark	609	717	963	455
Turtle	-	-	-	350
Lobster	369	181	216	104
<b>Total</b>	<b>38,303</b>	<b>32,619</b>	<b>42,320</b>	<b>34,022</b>
Count - Lobster	90	57	64	31
Fishing trips	308	253	332	272

Source: Ministry of Agriculture, Lands Housing and the Environment

Table 9.4 – Livestock (lbs) and Egg Data 2019 – 2022

Description	2019	2020	2021	2022
Chicken	42,259	37,522	14,868	9,143
Cattle	12,900	14,400	4,300	9,700
Sheep & Goats	27,080	10,800	6,700	7,000
Pigs	27,600	9,400	12,000	10,800
<b>Sub-Total</b>	<b>109,839</b>	<b>72,122</b>	<b>37,868</b>	<b>36,643</b>
<b>Quantity Produced (doz)</b>				
Eggs	38,247	61,642	47,207	37,868

Source: Ministry of Agriculture, Lands Housing and the Environment

## Environment

Table 10.1 – Fires by Type (monthly) 2019<sup>R</sup>

MONTH	Bush Fire	Structural Fire	Vehicle Fire	Lamp Pole Fire	Total
January	1	0	0	0	1
February	0	0	0	0	0
March	2	0	0	0	2
April	1	0	0	0	1
May	2	0	0	0	2
June	0	0	1	0	1
July	1	0	0	2	3
August	1	0	0	0	1
September	1	0	0	1	2
October	0	0	1	1	2
November	0	0	1	0	1
December	1	0	0	0	1
<b>Total</b>	<b>10</b>	<b>0</b>	<b>3</b>	<b>4</b>	<b>17</b>

Source: Montserrat Fire and Rescue Services  
Revised from previous dissemination

Table 10.2 – Fires by type (monthly) 2020

MONTH	Bush Fire	Structural Fire	Vehicle Fire	Lamp Pole Fire	Total
January	0	0	0	0	0
February	1	0	0	0	1
March	4	0	0	0	4
April	0	0	0	0	0
May	0	0	0	0	0
June	1	0	0	0	1
July	1	0	0	0	1
August	1	1	1	0	3
September	0	0	0	0	0
October	2	0	0	0	2
November	1	0	1	0	2
December	1	0	0	0	1
<b>Total</b>	<b>12</b>	<b>1</b>	<b>2</b>	<b>0</b>	<b>15</b>

Source: Montserrat Fire and Rescue Services

Table 10.3 – Fires by type (monthly) 2021

MONTH	Bush Fire	Structural Fire	Vehicle Fire	Lamp Pole Fire	Total
January	4	0	1	0	5
March	4	0	0	0	4
April	3	0	0	0	3
May	2	0	0	0	2
June	3	0	0	0	3
July	3	0	0	0	3
August	0	1	0	0	1
September	0	0	0	1	1
October	0	0	0	1	1
November	0	0	0	0	0
December	1	0	0	1	2
<b>Total</b>	<b>20</b>	<b>1</b>	<b>1</b>	<b>3</b>	<b>25</b>

Source: Montserrat Fire and Rescue Services

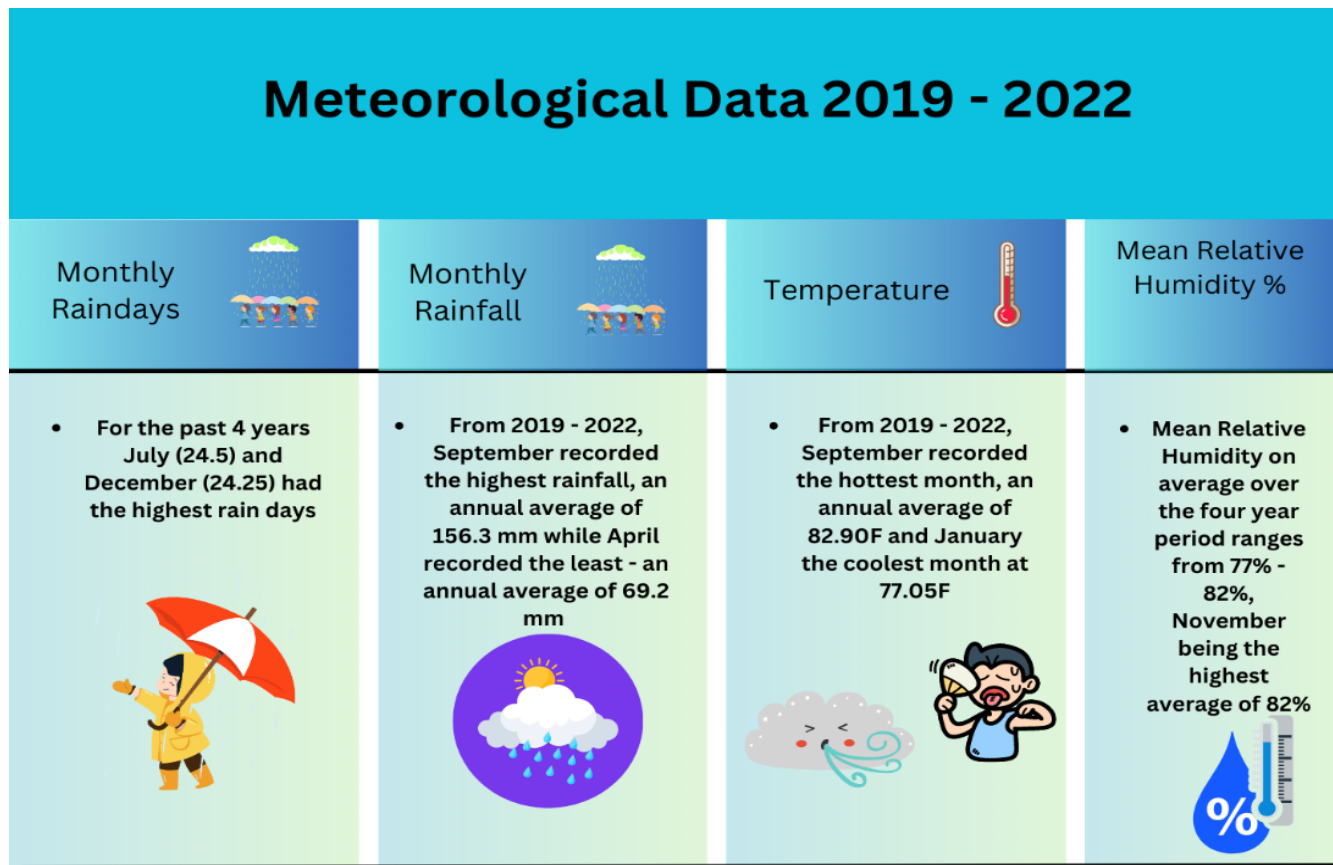
Table 10.4 – Fires by type (monthly) 2022

MONTH	Bush Fire	Structural Fire	Vehicle Fire	Lamp Pole Fire	Total
January	0	0	0	0	0
February	3	0	1	0	4
March	2	0	0	0	2
April	2	0	0	2	4
May	0	0	0	0	0
June	1	0	0	0	1
July	1	1	0	1	3
August	2	1	0	0	3
September	0	0	0	0	0
October	3	0	2	0	5
November	1	1	0	0	2
December	1	2	0	2	5
<b>Total</b>	<b>16</b>	<b>5</b>	<b>3</b>	<b>5</b>	<b>29</b>

Source: Montserrat Fire and Rescue Services



Figure 5 - Meteorological Data



The graph below shows the trends in rainfall (mm) from 2019 - 2022

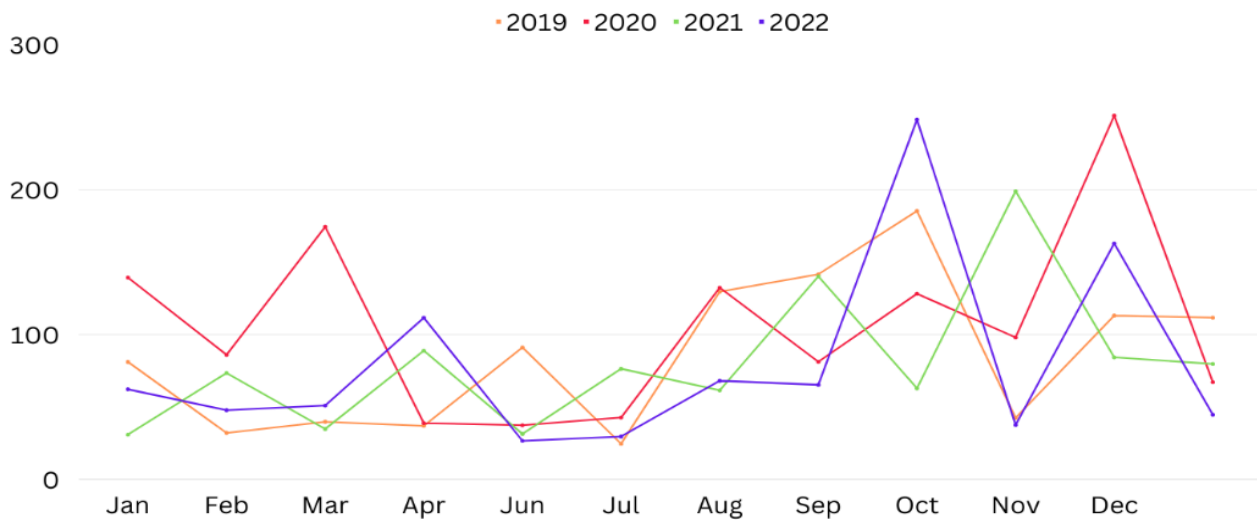


Table 10.5 – Monthly Rainfall (mm) 2019 – 2022

Month	2019	2020	2021	2022
January	81.2	139.5	31	62.3
February	32.2	86.1	73.6	47.9
March	39.9	174.5	34.9	51.1
April	37.1	39	89	111.7
May	91.2	37.5	31.5	26.7
June	24.7	42.8	76.5	29.7
July	129.7	132.5	61.6	68.2
August	141.7	81.3	140.3	65.4
September	185.4	128.3	63	248.5
October	42.6	98.1	199.1	37.7
November	113.2	251.2	84.4	163
December	111.8	67.2	79.8	44.7
<b>Total</b>	<b>1,031</b>	<b>1,278</b>	<b>965</b>	<b>957</b>

Source: John A. Osborne Airport, Meteorological Services

Table 10.6 – Rain Days (monthly) 2019 – 2022

Month	2019	2020	2021	2022
January	24	19	12	22
February	24	19	22	24
March	19	21	19	28
April	22	12	17	17
May	23	12	20	16
June	15	14	25	16
July	27	21	25	25
August	25	15	21	25
September	22	23	21	26
October	19	27	24	24
November	22	23	23	27
December	22	25	28	22
<b>Total</b>	<b>264</b>	<b>231</b>	<b>257</b>	<b>272</b>

Source: John A. Osborne Airport, Meteorological Services

Table 10.7 – Mean Relative Humidity % (monthly) 2019 – 2022

Month	2019	2020	2021	2022
January	81	81	76	76
February	80	79	74	78
March	78	78	74	76
April	77	78	77	76
May	83	78	76	80
June	83	78	78	78
July	80	78	78	79
August	82	78	80	78
September	80	81	79	81
October	77	82	79	81
November	80	82	80	84
December	81	79	78	76

Source: John A. Osborne Airport, Meteorological Services

Table 10.8 – Maximum and Minimum Temperature (monthly) 2019 – 2022

Month	2019		2020		2021		2022	
	Min	Max	Min	Max	Min	Max	Min	Max
January	71.2	78.1	72.0	79.7	72.9	80.4	72.1	79.5
February	71.6	79.5	72.5	80.1	72.1	80.6	72.1	80.2
March	72.9	81.1	72.3	80.2	72.7	81.1	72.1	81.0
April	73.6	81.9	75.0	83.3	73.9	81.7	68.7	-
May	74.8	82.6	76.8	84.9	75.4	83.1	72.7	-
June	76.6	84.4	78.1	85.6	75.9	84.2	76.8	-
July	77.4	85.8	77.4	85.5	76.6	84.4	76.6	-
August	77.4	85.1	78.4	85.8	77.4	84.7	77.4	-
September	76.8	85.6	77.4	85.6	77.2	86.0	77.7	-
October	77.5	85.5	76.1	83.8	77.2	84.7	76.8	-
November	75.4	83.3	75.2	81.7	75.7	83.1	75.6	-
December	74.3	81.9	73.2	80.8	73.8	81.0	73.8	-

Source: John A. Osborne Airport, Meteorological Services

Table 10.9 – Dry Bulb Temperature (monthly) 2019 – 2022

Month	2019	2020	2021	2022
January	24.3	25.2	25.4	25.2
February	24.8	25.2	25.4	25.8
March	25.3	25.2	25.4	25.5
April	25.8	-	26.1	25.7
May	26.2	-	27.1	26.9
June	27.4	-	27.5	27.8
July	28.2	-	28.3	27.8
August	28.1	-	28.0	28.2
September	28.3	28.3	28.4	28.1
October	28.2	27.4	28.0	27.7
November	27.1	26.5	27.1	26.7
December	26.4	25.7	26.0	25.5

Source: John A. Osborne Airport, Meteorological Services  
 - indicates data not available

## Production and Consumption

Table 11.1 – Spring Production Gls 2019 – 2022

Spring	2019	2020	2021	2022
Killie Crankie	52,859,060	55,479,700	43,008,500	13,217,780
Belham Wells	14,316,440	20,113,440	34,010,370	78,292,290
Forgarthy	4,440,600	7,280,000	7,202,600	2,576,550
Hope	27,827,100	25,132,330	23,870,320	23,349,780
Lawyer's Mountain	40,906,500	39,243,200	35,171,150	32,057,830
Olveston	23,505,080	22,008,500	21,866,050	18,170,380
Quashie	14,879,900	13,269,100	13,977,400	13,815,800
<b>Total</b>	<b>178,734,680</b>	<b>182,526,270</b>	<b>179,106,390</b>	<b>181,480,410</b>

Source: Montserrat Utilities Limited, Water Division

Table 11.2 – Spring Production Gls (monthly) 2019 – 2022

Month	2019	2020	2021	2022
January	15,588,370	14,828,900	14,918,180	14,519,520
February	14,047,790	14,224,930	12,760,530	13,367,900
March	16,796,720	16,483,280	14,569,620	15,219,540
April	14,956,700	15,045,320	15,813,780	16,042,220
May	14,892,440	15,976,720	16,451,280	14,658,110
June	15,061,800	15,581,020	15,359,390	15,709,450
July	14,750,570	15,764,560	15,776,400	15,745,530
August	14,747,680	16,048,740	15,208,310	15,836,060
September	13,742,490	13,772,920	14,780,800	15,828,450
October	15,837,070	14,919,940	14,987,610	15,416,120
November	13,481,330	15,249,570	13,737,450	14,775,010
December	14,831,720	14,630,370	14,743,040	14,362,500
<b>Total</b>	<b>178,734,680</b>	<b>182,526,270</b>	<b>179,106,390</b>	<b>181,480,410</b>

Source: Montserrat Utilities Limited, Water Division

Table 11.3 – Water Consumption '000 Gls by Type of Consumer 2019 – 2022

<b>Consumer by Type</b>	<b>2019</b>	<b>2020</b>	<b>2021</b>	<b>2022</b>
Domestic	76,633	81,174	76,850	71,897
Commercial	17,204	15,177	16,721	16,980
Building	1,127	1,288	1,822	1,971
Street Pipes	451	515	262	229
Own Use	235	160	135	367
<b>Total</b>	<b>95,650</b>	<b>98,314</b>	<b>95,790</b>	<b>91,444</b>

Source: Montserrat Utilities Limited, Water Division

Table 11.4 – Electricity Generation (kWh) - Generator (monthly) 2019 – 2022

<b>Month</b>	<b>2019</b>	<b>2020</b>	<b>2021</b>	<b>2022</b>
January	1,159,313	1,131,259	1,083,612	1,023,291
February	1,047,882	1,057,204	925,778	1,010,295
March	1,248,278	1,181,535	1,084,921	1,135,705
April	1,150,538	1,025,211	1,080,702	1,089,144
May	1,186,630	1,117,780	1,149,611	1,161,597
June	1,172,369	1,143,328	1,138,189	1,115,609
July	1,225,833	1,202,329	1,168,324	1,140,943
August	1,201,893	1,212,681	1,148,801	1,153,989
September	1,191,290	1,169,372	1,022,197	1,111,022
October	1,230,266	1,1579,52	1,126,951	1,143,048
November	1,149,232	1,099,670	1,121,806	1,102,305
December	1,210,415	1,116,725	1,143,141	1,136,036
<b>Total</b>	<b>14,173,939</b>	<b>13,615,046</b>	<b>13,194,033</b>	<b>13,322,984</b>

Source: Montserrat Utilities Limited, Electrical Division

Table 11.5 – Electricity Generation (kWh) - Solar (monthly) 2019 – 2022

Month	2019	2020	2021	2022
January	-	31,300	32,470	-
February	-	35,050	35,230	-
March	-	43,320	43,120	-
April	-	46,470	41,630	-
May	-	48,780	46,990	-
June	-	45,740	40,350	-
July	-	39,600	43,290	10,130
August	-	40,390	16,390	37,940
September	-	37,120	21,410	30,340
October	-	31,060	-	30,630
November	-	29,790	-	24,400
December	-	31,310	-	58,449
<b>Total</b>	<b>-</b>	<b>459,930</b>	<b>320,880</b>	<b>191,889</b>

Source: Montserrat Utilities Limited, Electrical Division

Table 11.6 – Total Annual Generation (kWh) 2019 – 2022

	2019	2020	2021	2022
Generation (kWh)	14,173,939	14,074,976	13,514,913	13,514,873

Source: Montserrat Utilities Limited, Electrical Division

Table 11.7 – Total Annual Consumption (kWh) by Type of Consumer - 2019 – 2022

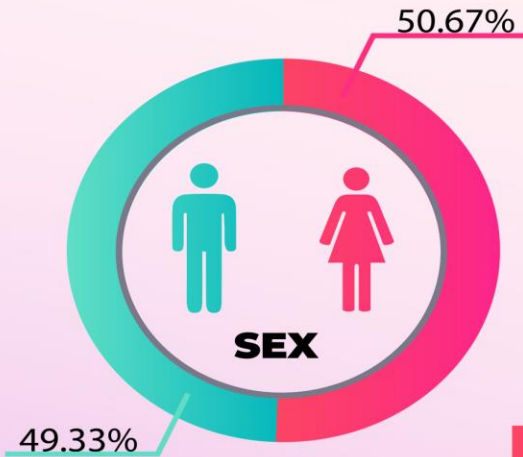
Consumer by Type	2019	2020	2021	2022
Domestic	5,671,010	5,875,058	5,671,261	5,439,684
Commercial	5,746,281	5,584,180	5,529,140	5,407,348
Industrial	4,700	5,734	5,991	6,790
Own Use	779,312	588,288	619,373	893,114
Streetlights	196,263	194,431	189,239	186,983
<b>Total</b>	<b>12,397,566</b>	<b>12,247,691</b>	<b>12,015,004</b>	<b>11,933,919</b>

Source: Montserrat Utility Limited, Electrical Division

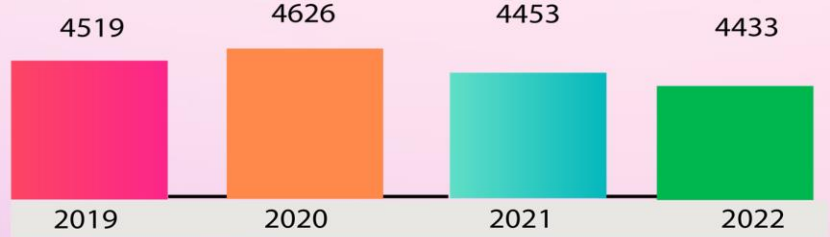
# Population

Figure 6 - Demographic Data

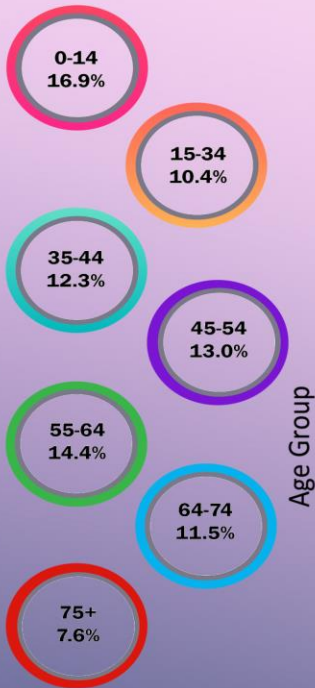
## MONTserrat DEMOGRAPHIC DATA



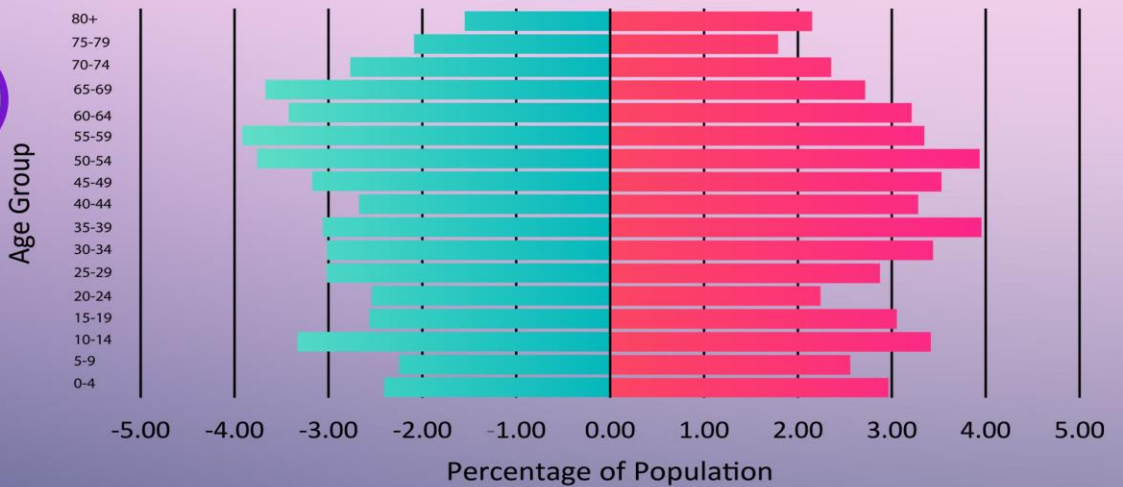
### MID-YEAR POPULATION ESTIMATES



### AGE DISTRIBUTION 2022



### POPULATION PYRAMID 2022



### HOUSEHOLD SIZE 2018





Figure 7 - Enumeration Areas (EA) Boundary



Figure 8 - Population by Enumeration District (ED) 2018

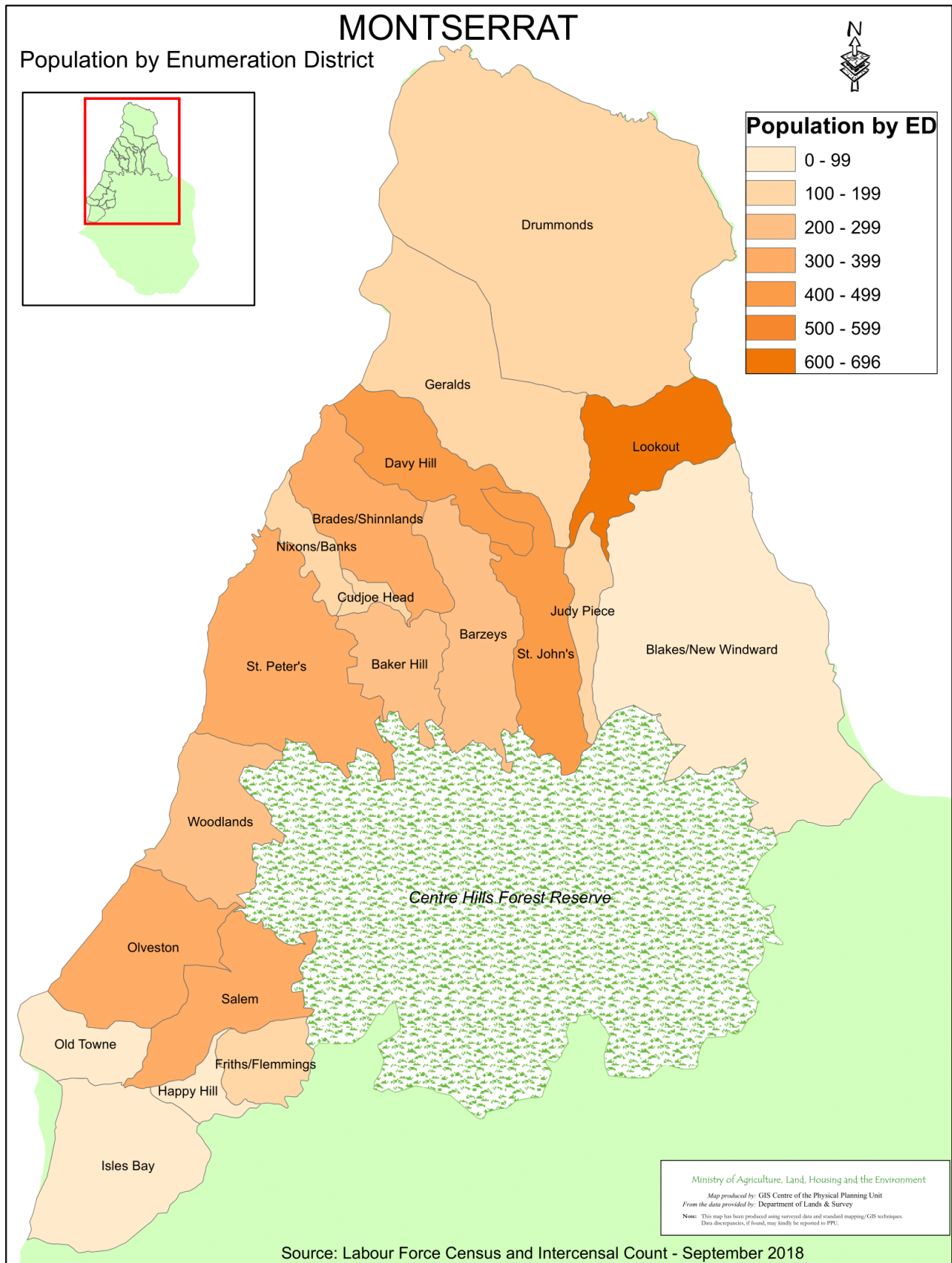


Table 12.1 – Mid-Year Population Estimates 2019 – 2022

Age	2019			2020			2021			2022		
	Male	Female	Total	Male	Female	Total	Male	Female	Total	Male	Female	Total
<1	30	25	55	19	24	43	26	28	54	19	22	41
1	18	25	43	28	28	56	22	27	49	26	32	58
2	25	25	50	16	26	42	29	28	57	22	24	46
3	25	27	52	24	27	51	14	27	41	27	27	54
4	15	20	35	25	27	52	23	26	49	13	26	39
5-9	134	143	277	109	123	232	111	114	225	100	113	213
10-14	159	160	319	162	159	321	150	152	302	148	151	299
15-19	116	130	246	125	135	260	130	140	270	114	135	249
20-24	136	105	241	124	114	238	108	112	220	113	99	212
25-29	142	138	280	167	134	301	144	125	269	134	127	261
30-34	140	171	311	138	183	321	136	165	301	134	152	286
35-39	126	157	283	123	166	289	124	174	298	136	175	311
40-44	155	169	324	150	167	317	139	148	287	119	145	264
45-49	149	174	323	156	172	328	152	165	317	141	156	297
50-54	180	175	355	182	185	367	166	169	335	167	174	341
55-59	160	144	304	171	143	314	171	149	320	174	148	322
60-64	155	128	283	154	134	288	137	131	268	152	142	294
65-69	140	95	235	148	130	278	157	116	273	163	120	283
70-74	108	92	200	121	92	213	122	92	214	123	104	227
75-79	67	58	125	77	70	147	81	72	153	93	79	172
80-84	35	48	83	34	48	82	37	38	75	35	42	77
85+	32	63	95	31	55	86	26	55	81	34	53	87
<b>TOTAL</b>	<b>2,247</b>	<b>2,272</b>	<b>4,519</b>	<b>2,284</b>	<b>2,342</b>	<b>4,626</b>	<b>2,205</b>	<b>2,253</b>	<b>4,458</b>	<b>2,187</b>	<b>2,246</b>	<b>4,433</b>

Source: Statistics Department, Ministry of Finance and Economic Management (MoFEM), MONTSERRAT.

Note: Mid-Year Population estimates are calculated as at June 30 of each year, using births, deaths and migration components. Migration here, monitors the movement of resident citizens.

Table 12.2 – Census and Intercensal Counts - Usual Resident Population 1991, 2001, 2006, 2011, 2018

Age Group	1991			2001			2006			2011			2018		
	Male	Female	Total	Male	Female	Total	Male	Female	Total	Male	Female	Total	Male	Female	Total
0-4	470	430	900	153	158	311	150	165	315	157	144	301	113	122	235
5-9	567	527	1094	153	124	277	175	159	334	146	165	311	144	158	302
10-14	401	395	796	148	133	281	192	146	338	187	172	359	156	160	316
15-19	432	441	873	149	124	273	156	140	296	179	140	319	130	137	267
20-24	459	457	916	113	93	206	165	126	291	152	117	269	142	107	249
25-29	496	463	959	169	150	319	132	137	269	154	145	299	140	143	283
30-34	417	418	835	176	170	346	185	190	375	138	160	298	152	181	333
35-39	380	344	724	211	171	382	225	223	448	172	196	368	127	163	290
40-44	318	270	588	171	154	325	191	191	382	189	217	406	148	173	321
45-49	255	207	462	196	139	335	200	166	366	196	185	381	156	183	339
50-54	185	182	367	170	112	282	187	153	340	183	148	331	183	179	362
55-59	137	168	305	136	103	239	173	134	307	181	133	314	163	158	321
60-64	167	212	379	108	95	203	152	114	266	165	110	275	166	125	291
65+	605	835	1440	344	345	689	331	360	691	347	344	691	386	354	740
Not Stated	1	0	1	21	2	23	5	5	10	0	0	0	0	0	0
N/A	0	0	0	0	0	0	0	0	5	0	0	0	0	0	0
<b>Total</b>	<b>5,290</b>	<b>5,349</b>	<b>10,639</b>	<b>2,418</b>	<b>2,073</b>	<b>4,491</b>	<b>2,619</b>	<b>2,409</b>	<b>5,033</b>	<b>2,546</b>	<b>2,376</b>	<b>4,922</b>	<b>2,306</b>	<b>2,343</b>	<b>4,649</b>

Source - Population and Housing Census 1991, 2001, 2011

Intercensal Count 2006

Labour Force Census and Intercensal Count, 2018

Table 12.3 – Enumerated Population by Enumeration District and Sex – 2018

Enumeration District	Male	Female	Total
Isles Bay	10	6	16
Happy Hill	9	6	15
Frith/Flemming	90	85	175
Salem	168	152	320
Old Towne	40	38	78
Olveston	166	158	324
Woodlands	108	134	242
St. Peters	195	185	380
Cudjoe Head	59	72	131
Nixons/Banks	58	60	118
Brades/Shinnlands	178	215	393
Baker Hill	105	106	211
Barzeys	101	107	208
Davy Hill	199	211	410
Geralds Bottom	70	63	133
St. Johns	198	207	405
Judy Piece	102	88	190
Look Out	339	357	696
Drummonds	61	60	121
<b>Total</b>	<b>2,256</b>	<b>2,310</b>	<b>4,566</b>

Source: Labour Force Census and Intercensal Count - September 2018

### Vital Statistics – Terms and Definitions

**Life Expectancy at Birth** - The average number of years that a newborn could expect to live, if he or she were to pass through life exposed to the sex- and age-specific death rates prevailing at the time of his or her birth, for a specific year, in a given country, territory, or geographic area.

**Sex Ratio at Population Level** – The ratio of males to female in a population. If this figure is under 100 it denotes that there are more females than their males' counterparts in a given population.

**Age Dependency Ratio** – the ratio of dependents younger than 15 or older than 64 to the working population. Data are shown as the proportion of dependents per 100 working (age) population.

**Age-specific Fertility Rates** - the ratio of annual births to women at a given age or age-group to the population of women at the same age or age-group, in the same year, for a given country, territory, or geographic area.

**Total Fertility Rate** - The total fertility rate in a specific year is defined as the total number of children that would be born to each woman if she were to live to the end of her child-bearing years and give birth to children in alignment with the prevailing age-specific fertility rates. It is calculated by totaling the age-specific fertility rates.

**General Fertility Rate** – the number of live births during a specific period (usually a calendar year) divided by the female population age 15-49 years (usually estimated for a mid-year).

**Gross reproduction Rate** - The gross reproduction rate is the average number of daughters that would be born alive to a hypothetical cohort of women if they lived to the end of their reproductive years and if they experienced the same age-specific fertility throughout their lives that women in each age group experience in a given year or period.

**Parity** - Parity is defined as the number of times that a female has given birth to a fetus with a gestational age of 24 weeks or more, regardless of whether the child was born alive or was stillborn. A parity of zero means that this is the female's first pregnancy and has had no previous live births. A female of parity 1 has had one live birth, of parity 2, two live births and so on.

Sources: OECD Glossary and World Health Organization

Table 13.1 – Vital Statistics and Fertility Measures

	2019	2020	2021	2022
<b>Population Estimates</b>	4,519	4,626	4,458	4,433
Male	2,247	2,284	2,205	2,187
Female	2,272	2,342	2,253	2,246
Population Growth Rate	-3.2	2.4	-3.6	-0.6
<b>Total Life Expectancy at Birth</b>	78	80	79	76
Male	75	79	79	74
Female	81	82	78	78
<b>Sex Ratio (Population Level)</b>	99	98	98	97
<b>Live Births</b>				
Male	22	21	22	19
Female	25	29	21	16
Total	47	50	43	35
Birth Rate (per 1,000 pop)	10.4	10.8	9.6	7.9
<b>Deaths</b>				
Male	32	20	23	36
Female	27	19	23	22
Total	59	39	46	58
<b>Infants under 1 year, of which</b>				
Male	0	0	0	0
Female	0	0	0	0
Death Rate (per 1,000 pop)	13.1	8.4	10.3	13.1
<b>Age Dependency Ratio</b>	53	53	55	56
Old Age Dependency Ratio	25	27	28	30
Youth Dependency Ratio	28	26	27	26
<b>Age Specific Fertility Rates (ASFR):</b>				
10-14	0	0	0	0
5-19	14	23	7	0
20-24	30	95	88	80
25-29	122	72	104	112
30-34	91	64	93	48
35-39	46	57	36	57
40-44	12	24	12	14
45-49	0	0	0	0
<b>Total Fertility Rate (TFR)</b>	1.7	1.7	1.6	1.3
<b>General Fertility Rate (GFR)</b>	45.0	46.7	41.8	35.4
<b>Gross Reproduction Rate (GRR)</b>	0.9	1.0	0.8	0.6
<b>Marriages</b>	6	11	14	19

Source: Statistics Department, Ministry of Finance and Economic Management (MoFEM), MONTSERRAT.

Table 13.2 – Births by Month 2019 – 2022

Month	2019	2020	2021	2022
January	6	2	3	3
February	6	4	2	4
March	4	5	4	1
April	5	3	2	4
May	3	3	7	4
June	4	2	4	2
July	5	4	2	0
August	0	3	7	3
September	3	4	4	2
October	5	10	6	3
November	3	5	0	4
December	3	5	2	5
<b>Total</b>	<b>47</b>	<b>50</b>	<b>43</b>	<b>35</b>

Source: Medical Records, Glendon Hospital

Table 13.3 – Births by Mother’s Age Group 2019 – 2022

Mother's Age	2019	2020	2021	2022
15-19	3	1	0	4
20-24	10	10	9	6
25-29	10	14	14	6
30-34	11	17	8	12
35-39	9	6	10	4
40-44	4	2	2	3
<b>Total</b>	<b>47</b>	<b>50</b>	<b>43</b>	<b>35</b>

Source: Medical Records, Glendon Hospital



Table 13.4 – Births by parity and age of mother – 2019

Age Group	Parity						Total
	0	1st	2nd	3rd	4th	5+	
Under 15	0	0	0	0	0	0	0
15 - 19	3	0	0	0	0	0	3
20 - 24	6	3	0	1	0	0	10
25 - 29	3	6	1	0	0	0	10
30 - 34	0	6	4	0	1	0	11
35 - 39	3	1	2	1	1	1	9
40 - 44	0	1	1	1	0	1	4
45+	0	0	0	0	0	0	0
<b>Total</b>	<b>15</b>	<b>17</b>	<b>8</b>	<b>3</b>	<b>2</b>	<b>2</b>	<b>47</b>

Source: Medical Records, Glendon Hospital

Table 13.5 – Births by parity and age of mother – 2020

Age Group	Parity						Total
	0	1st	2nd	3rd	4th	5+	
Under 15	0	0	0	0	0	0	0
15 - 19	1	0	0	0	0	0	1
20 - 24	6	2	1	1	0	0	10
25 - 29	4	10	0	0	0	0	14
30 - 34	1	8	6	2	0	0	17
35 - 39	0	3	2	0	0	1	6
40 - 44	0	1	1	0	0	0	2
45+	0	0	0	0	0	0	0
<b>Total</b>	<b>12</b>	<b>24</b>	<b>10</b>	<b>3</b>	<b>0</b>	<b>1</b>	<b>50</b>

Source: Medical Records, Glendon Hospital

Table 13.6 – Births by parity and age of mother – 2021

Age Group	Parity						Total
	0	1st	2nd	3rd	4th	5+	
Under 15	0	0	0	0	0	0	0
15 - 19	0	0	0	0	0	0	0
20 - 24	7	2	0	0	0	0	9
25 - 29	5	8	1	0	0	0	14
30 - 34	3	2	3	0	0	0	8
35 - 39	2	3	4	0	0	0	9
40 - 44	0	1	0	0	1	1	3
45+	0	0	0	0	0	0	0
<b>Total</b>	<b>17</b>	<b>16</b>	<b>8</b>	<b>0</b>	<b>1</b>	<b>1</b>	<b>43</b>

Source: Medical Records, Glendon Hospital

Table 13.7 – Births by parity and age of mother – 2022

Age Group	Parity						Total
	0	1st	2nd	3rd	4th	5+	
Under 15	0	0	0	0	0	0	0
15 - 19	4	0	0	0	0	0	4
20 - 24	4	2	0	0	0	0	6
25 - 29	1	1	4	0	0	0	6
30 - 34	6	5	1	0	0	0	12
35 - 39	1	0	2	0	0	1	4
40 - 44	0	1	0	2	0	0	3
45+	0	0	0	0	0	0	0
<b>Total</b>	<b>16</b>	<b>9</b>	<b>7</b>	<b>2</b>	<b>0</b>	<b>1</b>	<b>35</b>

Source: Medical Records, Glendon Hospital

Table 13.8 – Deaths by Age Group and Sex 2019 – 2022

Age Group	2019			2020			2021			2022		
	Male	Female	Total	Male	Female	Total	Male	Female	Total	Male	Female	Total
Under 1												
Year	0	0	0	0	0	0	0	0	0	0	0	0
1-4	0	0	0	0	0	0	0	0	0	0	0	0
5-9	0	0	0	0	0	0	0	0	0	0	0	0
10-14	0	0	0	1	0	1	0	0	0	0	0	0
15-19	0	0	0	0	0	0	0	0	0	0	0	0
20-24	0	0	0	0	0	0	0	0	0	0	1	1
25-29	0	0	0	0	0	0	0	0	0	0	0	0
30-34	0	0	0	1	0	1	0	0	0	0	0	0
35-39	0	0	0	0	1	1	0	0	0	0	1	1
40-44	1	0	1	0	0	0	0	2	2	1	0	1
45-49	0	0	0	0	1	1	0	1	1	1	0	1
50-54	1	0	1	0	1	1	0	0	0	2	2	4
55-59	1	0	1	0	0	0	0	0	0	2	1	3
60-64	4	1	5	1	2	3	2	3	5	2	0	2
65-69	3	1	4	1	0	1	4	3	7	6	2	8
70-74	4	1	5	3	1	4	4	0	4	4	1	5
75-79	5	4	9	3	2	5	2	3	5	4	1	5
80-84	5	4	9	4	4	8	5	3	8	4	3	7
85+	8	16	24	6	7	13	6	8	14	10	10	20
<b>Total</b>	<b>32</b>	<b>27</b>	<b>59</b>	<b>20</b>	<b>19</b>	<b>39</b>	<b>23</b>	<b>23</b>	<b>46</b>	<b>36</b>	<b>22</b>	<b>58</b>

Source: Medical Records, Glendon Hospital

Table 13.9 – Deaths by Months and Sex 2019 – 2022

Month	2019			2020			2021			2022		
	Male	Female	Total	Male	Female	Total	Male	Female	Total	Male	Female	Total
January	6	3	9	0	0	0	3	2	5	2	2	4
February	4	4	8	4	5	9	1	3	4	3	5	8
March	2	1	3	2	3	5	2	1	3	2	3	5
April	0	5	5	2	2	4	2	1	3	4	2	6
May	3	1	4	1	0	1	6	6	12	7	4	11
June	3	1	4	1	0	1	1	3	4	2	0	2
July	0	2	2	1	2	3	1	2	3	0	0	0
August	4	2	6	4	1	5	1	2	3	2	1	3
September	3	3	6	0	1	1	0	0	0	3	2	5
October	2	4	6	2	2	4	2	1	3	4	0	4
November	1	0	1	2	1	3	1	1	2	3	0	3
December	4	1	5	1	2	3	3	1	4	4	3	7
<b>Total</b>	<b>32</b>	<b>27</b>	<b>59</b>	<b>20</b>	<b>19</b>	<b>39</b>	<b>23</b>	<b>23</b>	<b>46</b>	<b>36</b>	<b>22</b>	<b>58</b>

Source: Medical Records, Glendon Hospital

Table 13.10 – Leading Causes of Death 2019 – 2021

Cause of Death by Category	2019	2020	2021
Infective & Parasitic Diseases	9	1	2
Malignant Neoplasms (Cancers)	9	7	9
Allergic Endocrine System Metabolic Disorders	6	10	4
Disease of the Blood and Blood Forming Organs	0	0	0
Diseases of the Nervous System and Sense Organs	1	1	2
Disease of the Heart and Circulatory System	20	9	19
Diseases of the Respiratory System	3	7	3
Diseases of the Digestive System	3	0	3
Diseases of the Genitourinary System	3	1	1
Congenital Abnormalities	0	0	0
Certain Conditions Originating in the Perinatal Period	0	0	0
Signs, Symptoms & Ill-defined Conditions	1	0	0
All Other Causes	1	2	1
Mental and Behavioural Disorders	1	0	1
Diseases of the Musculoskeletal System and Connective Tissue	0	0	1
Disease of the Skin and Subcutaneous Tissue	2	1	0

Source: Medical Records, Glendon Hospital

Table 13.11 – Leading Causes of Death (detailed) by Sex 2019 – 2021

CAUSE OF DEATH	2019			2020			2021		
	Male	Female	Total	Male	Female	Total	Male	Female	Total
<b>INFECTIVE &amp; PARASITIC DISEASES</b>	<b>6</b>	<b>3</b>	<b>9</b>	<b>1</b>	<b>0</b>	<b>1</b>	<b>1</b>	<b>1</b>	<b>2</b>
Septicaemia	3	1	4	1	0	1	1	1	2
Remainder	3	2	5	0	0	0	0	0	0
<b>MALIGNANT NEOPLASMS (cancers)</b>	<b>6</b>	<b>3</b>	<b>9</b>	<b>2</b>	<b>5</b>	<b>7</b>	<b>3</b>	<b>6</b>	<b>9</b>
Prostate	3	0	3	1	0	1	1	0	1
Remainder	3	3	6	1	5	6	2	6	8
<b>ALLERGIC ENDOCRINE SYSTEM METABOLIC DISORDERS</b>	<b>3</b>	<b>3</b>	<b>6</b>	<b>6</b>	<b>4</b>	<b>10</b>	<b>3</b>	<b>1</b>	<b>4</b>
Diabetes Mellitus	3	2	5	6	4	10	3	1	4
Other	0	1	1	0	0	0	0	0	0
<b>DISEASE OF THE BLOOD &amp; BLOOD FORMING ORGANS</b>	<b>0</b>	<b>0</b>	<b>0</b>	<b>0</b>	<b>0</b>	<b>0</b>	<b>0</b>	<b>0</b>	<b>0</b>
Anaemias	0	0	0	0	0	0	0	0	0
<b>DISEASE OF THE NERVOUS SYSTEM AND SENSE ORGANS</b>	<b>0</b>	<b>1</b>	<b>1</b>	<b>1</b>	<b>0</b>	<b>1</b>	<b>1</b>	<b>1</b>	<b>2</b>
Parkinson's Disease	0	0	0	0	0	0	0	1	1
Epilepsy	0	0	0	0	0	0	1	0	1
Other Diseases of the Nervous system and Sense Organs	0	1	1	1	0	1	0	0	0
<b>DISEASE OF THE HEART AND CIRCULATORY SYSTEM</b>	<b>9</b>	<b>11</b>	<b>20</b>	<b>5</b>	<b>4</b>	<b>9</b>	<b>12</b>	<b>7</b>	<b>19</b>
Acute Myocardial Infarction	0	0	0	0	0	0	1	0	1
Other Ischaemic Heart Disease	1	0	1	1	0	1	0	1	1
Cerebrovascular (CVA) Diseases	1	6	7	0	1	1	0	0	0
Other Disease of the Heart and Circulatory System	7	5	12	4	3	7	11	6	17
<b>DISEASES OF THE RESPIRATORY SYSTEM</b>	<b>3</b>	<b>0</b>	<b>3</b>	<b>3</b>	<b>4</b>	<b>7</b>	<b>0</b>	<b>3</b>	<b>3</b>
Pneumonia	1	0	1	0	3	3	0	0	0
Bronchitis, Emphysema, Asthma	0	0	0	0	0	0	0	0	0
Other Respiratory Diseases	2	0	2	3	1	4	0	3	3
<b>DISEASES OF THE DIGESTIVE SYSTEM</b>	<b>1</b>	<b>2</b>	<b>3</b>	<b>0</b>	<b>0</b>	<b>0</b>	<b>3</b>	<b>0</b>	<b>3</b>
Chronic Liver Disease and Cirrhosis	0	0	0	0	0	0	1	0	1
Other	1	2	3	0	0	0	2	0	2
<b>DISEASES OF THE GENITOURINARY SYSTEM</b>	<b>2</b>	<b>1</b>	<b>3</b>	<b>0</b>	<b>1</b>	<b>1</b>	<b>0</b>	<b>1</b>	<b>1</b>
Nephritis & Nephrotic Syndrome Renal Failure	2	1	3	0	1	1	0	1	1
<b>CONGENITAL ABNORMALITIES</b>	<b>0</b>	<b>0</b>	<b>0</b>	<b>0</b>	<b>0</b>	<b>0</b>	<b>0</b>	<b>0</b>	<b>0</b>
<b>CERTAIN CONDITIONS ORIGINATING IN THE PERINATAL PERIOD</b>	<b>0</b>	<b>0</b>	<b>0</b>	<b>0</b>	<b>0</b>	<b>0</b>	<b>0</b>	<b>0</b>	<b>0</b>
<b>SIGNS, SYMPTOMS &amp; ILL-DEFINED CONDITIONS</b>	<b>1</b>	<b>0</b>	<b>1</b>	<b>0</b>	<b>0</b>	<b>0</b>	<b>0</b>	<b>0</b>	<b>0</b>
<b>ALL OTHER CAUSES</b>	<b>1</b>	<b>0</b>	<b>1</b>	<b>1</b>	<b>1</b>	<b>2</b>	<b>0</b>	<b>1</b>	<b>1</b>
Drowning	0	0	0	1	0	1	0	0	0
Homicide & Injury Purposely Inflicted by Other Persons	1	0	1	0	0	0	0	0	0
Other Causes	0	0	0	0	1	1	0	1	1
<b>MENTAL AND BEHAVIOURAL DISORDERS</b>	<b>0</b>	<b>1</b>	<b>1</b>	<b>0</b>	<b>0</b>	<b>0</b>	<b>0</b>	<b>1</b>	<b>1</b>
Senile Dementia	0	1	1	0	0	0	0	1	1
<b>DISEASE OF THE MUSCULOSKELETAL SYSTEM AND CONNECTIVE TISSUE</b>	<b>0</b>	<b>0</b>	<b>0</b>	<b>0</b>	<b>0</b>	<b>0</b>	<b>0</b>	<b>1</b>	<b>1</b>
Other	0	0	0	0	0	0	0	1	1
<b>DISEASE OF THE SKIN AN SUBCUTANEOUS TISSUE</b>	<b>0</b>	<b>2</b>	<b>2</b>	<b>1</b>	<b>0</b>	<b>1</b>	<b>0</b>	<b>0</b>	<b>0</b>
<b>TOTAL</b>	<b>32</b>	<b>27</b>	<b>59</b>	<b>20</b>	<b>19</b>	<b>39</b>	<b>23</b>	<b>23</b>	<b>46</b>

Source: Medical Records, Glendon Hospital

Table 13.12 – Summary of Surgical Procedures 2019 & 2020

Year	Major	Minor	Total
2019	49	61	110
2020	49	70	119

Source: Operating Theatre Register, Glendon Hospital

Table 13.13 – Age and Sex Distribution of Surgical Patients 2019 & 2020

Age	2019			2020		
	Male	Female	Total	Male	Female	Total
0-4	0	2	2	4	2	6
5-9	5	3	8	3	0	3
15-24	1	5	6	3	8	11
25-44	13	35	48	5	46	51
45-64	10	13	23	6	22	28
65+	13	10	23	9	11	20
<b>Total</b>	<b>42</b>	<b>68</b>	<b>110</b>	<b>30</b>	<b>89</b>	<b>119</b>

Source: Operating Theatre Register, Glendon Hospital

Table 13.14 – Summary of Surgical Procedures by Month, 2019 & 2020

Month	2019	2020
January	10	10
February	9	7
March	10	5
April	6	4
May	10	11
June	8	11
July	11	8
August	8	10
September	13	13
October	13	15
November	3	12
December	9	13
<b>Total</b>	<b>110</b>	<b>119</b>

Source: Operating Theatre Register, Glendon Hospital

Table 13.15 – Main Surgical Procedures 2019 & 2020

Procedure	2019	2020
Caesarean Section	22	24
Dilation and Cerettage (D & C)	8	14
Circumcision	2	4
Hysterectomy	2	5
Tubal Litigation	3	5
Breast Lump Excision	0	1
Herniohaphy/Herniotomy/Hernioplasty	4	4
Amputation: Digit	1	7
Manipulation under Anesthesia (MUA)	2	3
Cystoscopy	5	4
Exploratory Laparotomy	1	0
Removal of Foreign Body (ear and nose)	0	1

Source: Operating Theatre Register, Glendon Hospital

Table 13.16 – Age and Sex Distribution of Minor Procedures (Performed in Casualty Department) 2019 & 2020

Age	2019			2020		
	Male	Female	Total	Male	Female	Total
0-4	4	4	8	4	3	7
5-9	10	5	15	12	3	15
15-24	15	5	20	18	7	25
25-44	21	17	38	29	16	45
45-64	14	7	21	28	16	44
65+	20	8	28	43	14	57
Not Stated	6	5	11	8	7	15
<b>Total</b>	<b>90</b>	<b>51</b>	<b>141</b>	<b>142</b>	<b>66</b>	<b>208</b>

Source: Operating Theatre Register, Glendon Hospital

Table 13.17 – Summary of Minor Procedures (Performed in Casualty Department) by Month, 2019 & 2020

Month	2019	2020
January	20	13
February	9	13
March	8	20
April	18	18
May	9	20
June	9	7
July	12	17
August	13	22
September	8	17
October	20	9
November	2	27
December	13	25
<b>Total</b>	<b>141</b>	<b>208</b>

Source: Operating Theatre Register, Glendon Hospital

Table 13.18 – Number of Public Sector Doctors and Nurses 2020 – 2022

Category	Dec-20	Dec-21	Dec-22
Doctors	5	5	7
Ward Sisters & Nurse Anaesthetist	4	4	4
Staff & Registered Nurses	20	17	20
Enrolled Nursing Assistants	12	10	11
<b>Total</b>	<b>41</b>	<b>36</b>	<b>42</b>

Source: Human Resource Management Unit (HRMU)

Note: The above information does not reflect the Cuban delegation who worked on island during the pandemic.



# EDUCATION IN MONTSERRAT

## SCHOOL ENROLMENT 2022

### EARLY CHILDHOOD

# of Day Cares/ Preschools - 8  
 Pupil Enrolment- 169  
 # of Caregivers -41

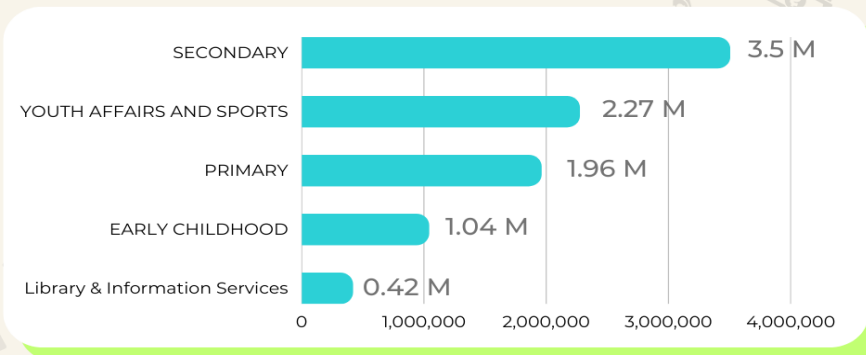
### PRIMARY

# of Schools - 3  
 Pupil Enrolment- 341  
 # of Teachers - 21  
 # of Assistants - 10

### SECONDARY

# of Schools - 1  
 Pupil Enrolment- 294  
 # of Teachers- 41

## GOVERNMENT EXPENDITURE ON EDUCATION (BUDGET ESTIMATES 2022- 2023)



## OVERALL CXC PASS RATE



2019



2020



2021



2022

Table 14.1 – Early Childhood Education Enrolment 2019 – 2022

Year	M	F	Total
2019 - 2020	94	91	185
2020 - 2021	84	88	172
2021 - 2022	61	54	144*
2022 - 2023	73	96	169

Source: Ministry of Education & Statistics Department, Ministry of Finance & Economic Management (MoFEM) MONTSERRAT

\*Data n/a for one private center

Table 14.2 – Early Childhood Education Enrolment by Sex and Age 2019 – 2020 (Public)

Age at Oct 15, 2019	Male	Female	Total
Under 1	2	1	3
1	18	12	30
2	14	11	25
3	11	14	25
4	10	9	19
5+	4	3	7
<b>Total</b>	<b>57</b>	<b>50</b>	<b>109</b>

Source: Ministry of Education

Table 14.3 – Early Childhood Education Enrolment by Sex and Age 2020 – 2021 (Public)

Age at Oct 15, 2020	Male	Female	Total
Under 1	0	0	0
1	17	14	31
2	20	18	38
3	19	14	33
4	5	9	14
5+	0	0	0
<b>Total</b>	<b>61</b>	<b>55</b>	<b>116</b>

Source: Ministry of Education

Table 14.4 – Early Childhood Education Enrolment by Sex and Age 2021 – 2022 (Public)

Age at Oct 15, 2021	Male	Female	Total
Under 1	0	0	0
1	11	13	24
2	15	12	27
3	18	17	35
4	17	10	27
5+	0	2	2
<b>Total</b>	<b>61</b>	<b>54</b>	<b>115</b>

Source: Ministry of Education

Table 14.5 – Early Childhood Education Enrolment by Sex and Age 2022 – 2023 (Public)

Age at Oct 15, 2023	Male	Female	Total
Under 1	0	0	0
1	10	10	20
2	9	19	28
3	20	23	43
4	17	9	26
5+	0	0	0
<b>Total</b>	<b>56</b>	<b>61</b>	<b>117</b>

Source: Ministry of Education

Table 14.6 – Early Childhood Education Enrolment by Sex and Age 2019 – 2020 (Private)

Age at Oct 15, 2019	Male	Female	Total
Under 1	8	8	16
1	6	9	15
2	7	7	14
3	10	10	20
4	4	7	11
5+	0	0	0
<b>Total</b>	<b>35</b>	<b>41</b>	<b>76</b>

Source: Ministry of Education

Table 14.7 – Early Childhood Education Enrolment by Sex and Age 2020 – 2021 (Private)

Age at Oct 15, 2020	Male	Female	Total
Under 1	7	5	12
1	5	8	13
2	7	14	21
3	4	6	10
4	0	0	0
5+	0	0	0
<b>Total</b>	<b>23</b>	<b>33</b>	<b>56</b>

Source: Statistics Department, Ministry of Finance & Economic Management (MoFEM) MONTSEERRAT

Table 14.8 – Early Childhood Education Enrolment by Sex and Age 2021 – 2022 (Private)

Age at Oct 15, 2020	Male	Female	Total
Under 1	1	2	3
1	2	1	3
2	3	4	7
3	3	8	11
4	3	2	5
5+	0	0	0
<b>Total</b>	<b>12</b>	<b>17</b>	<b>29</b>

Source: Ministry of Education & Statistics Department, Ministry of Finance & Economic Management (MoFEM) MONTSEERRAT

Table 14.9 – Early Childhood Education Enrolment by Sex and Age 2022 – 2023 (Private)

Age at Oct 15, 2020	Male	Female	Total
Under 1	1	5	6
1	7	9	16
2	4	9	13
3	3	5	8
4	2	7	9
5+	0	0	0
<b>Total</b>	<b>17</b>	<b>35</b>	<b>52</b>

Source: Ministry of Education & Statistics Department, Ministry of Finance & Economic Management (MoFEM) MONTSEERRAT

Table 14.10 – Total Primary School Enrolment by Grade 2019 – 2022

Year	K	1	2	3	4	5	6	Total
2019-2020	44	58	49	61	64	60	76	412
2020-2021	58	45	57	54	57	59	59	389
2021-2022	41	63	41	53	55	52	60	365
2022-2023	58	40	54	41	52	47	49	341

Source: Ministry of Education/ Statistics Department, Ministry of Finance & Economic Management (MoFEM), MONTSEERRAT

Table 14.11 – Total Primary School Enrolment by Grade, Age and Sex 2019 – 2020

Age at Oct 15, 2019	Sex	Grades							Total	
		K	G1	G2	G3	G4	G5	G6		
<5	M	7	0	0	0	0	0	0	7	18
	F	11	0	0	0	0	0	0	11	
5	M	12	11	0	0	0	0	0	23	50
	F	13	14	0	0	0	0	0	27	
6	M	0	17	12	0	0	0	0	29	54
	F	1	14	9	1	0	0	0	25	
7	M	0	1	13	10	0	0	0	24	50
	F	0	1	11	14	0	0	0	26	
8	M	0	0	1	14	13	0	0	28	58
	F	0	0	3	19	8	0	0	30	
9	M	0	0	0	2	15	8	0	25	59
	F	0	0	0	1	22	11	0	34	
10	M	0	0	0	0	3	18	11	32	74
	F	0	0	0	0	3	14	25	42	
11	M	0	0	0	0	0	6	18	24	47
	F	0	0	0	0	0	3	20	23	
12	M	0	0	0	0	0	0	2	2	2
	F	0	0	0	0	0	0	0	0	
13	M	0	0	0	0	0	0	0	0	0
	F	0	0	0	0	0	0	0	0	
Total	M	19	29	26	26	31	32	31	194	412
	F	25	29	23	35	33	28	45	218	
<b>Total</b>		<b>44</b>	<b>58</b>	<b>49</b>	<b>61</b>	<b>64</b>	<b>60</b>	<b>76</b>	<b>412</b>	

Source: Ministry of Education/ Statistics Department, Ministry of Finance & Economic Management (MoFEM), MONTSEERRAT

Table 14.12 – Total Primary School Enrolment by Grade, Age and Sex 2020 – 2021

Age at Oct 15, 2020	Sex	Grades							Total	
		K	G1	G2	G3	G4	G5	G6		
<5	M	12	0	0	0	0	0	0	12	27
	F	15	0	0	0	0	0	0	15	
5	M	16	5	0	0	0	0	0	21	45
	F	15	9	0	0	0	0	0	24	
6	M	0	17	8	0	0	0	0	25	52
	F	0	13	14	0	0	0	0	27	
7	M	0	0	17	11	0	0	0	28	52
	F	0	1	15	8	0	0	0	24	
8	M	0	0	1	13	11	0	0	25	56
	F	0	0	2	15	14	0	0	31	
9	M	0	0	0	3	13	11	0	27	52
	F	0	0	0	4	15	6	0	25	
10	M	0	0	0	0	2	12	8	22	56
	F	0	0	0	0	2	22	10	34	
11	M	0	0	0	0	0	4	17	21	40
	F	0	0	0	0	0	4	15	19	
12	M	0	0	0	0	0	0	6	6	9
	F	0	0	0	0	0	0	3	3	
13	M	0	0	0	0	0	0	0	0	0
	F	0	0	0	0	0	0	0	0	
Total	M	28	22	26	27	26	27	31	187	389
	F	30	23	31	27	31	32	28	202	
<b>Total</b>		<b>58</b>	<b>45</b>	<b>57</b>	<b>54</b>	<b>57</b>	<b>59</b>	<b>59</b>	<b>389</b>	

Source: Ministry of Education/ Statistics Department, Ministry of Finance & Economic Management (MoFEM), MONTSERRAT

Table 14.13 – Total Primary School Enrolment by Grade, Age and Sex 2021 – 2022

Age at Oct 15, 2020	Sex	Grades							Total	
		K	G1	G2	G3	G4	G5	G6		
<5	M	5	0	0	0	0	0	0	5	<b>14</b>
	F	9	0	0	0	0	0	0	9	
5	M	13	12	0	0	0	0	0	25	<b>53</b>
	F	14	14	0	0	0	0	0	28	
6	M	0	19	5	0	0	0	0	24	<b>49</b>
	F	0	17	8	0	0	0	0	25	
7	M	0	1	15	6	0	0	0	22	<b>43</b>
	F	0	0	11	10	0	0	0	21	
8	M	0	0	0	17	9	0	0	26	<b>54</b>
	F	0	0	2	17	9	0	0	28	
9	M	0	0	0	1	14	8	0	23	<b>51</b>
	F	0	0	0	2	13	13	0	28	
10	M	0	0	0	0	4	13	12	29	<b>55</b>
	F	0	0	0	0	6	14	6	26	
11	M	0	0	0	0	0	2	12	14	<b>37</b>
	F	0	0	0	0	0	2	21	23	
12	M	0	0	0	0	0	0	5	5	<b>9</b>
	F	0	0	0	0	0	0	4	4	
13	M	0	0	0	0	0	0	0	0	<b>0</b>
	F	0	0	0	0	0	0	0	0	
Total	M	18	32	20	24	27	23	29	173	
	F	23	31	21	29	28	29	31	192	<b>365</b>
<b>Total</b>		<b>41</b>	<b>63</b>	<b>41</b>	<b>53</b>	<b>55</b>	<b>52</b>	<b>60</b>	<b>365</b>	

Source: Ministry of Education/ Statistics Department, Ministry of Finance & Economic Management (MoFEM), MONTSERRAT

Table 14.14 – Total Primary School Enrolment by Grade, Age and Sex 2022 – 2023

Age at Oct 15, 2020	Sex	Grades							Total	
		K	G1	G2	G3	G4	G5	G6		
<5	M	9	0	0	0	0	0	0	9	27
	F	18	0	0	0	0	0	0	18	
5	M	18	3	0	0	0	0	0	21	41
	F	12	8	0	0	0	0	0	20	
6	M	1	11	10	0	0	0	0	22	43
	F	0	14	7	0	0	0	0	21	
7	M	0	2	19	5	0	0	0	26	49
	F	0	2	16	5	0	0	0	23	
8	M	0	0	0	14	6	0	0	20	49
	F	0	0	2	16	11	0	0	29	
9	M	0	0	0	0	17	10	0	27	51
	F	0	0	0	1	16	7	0	24	
10	M	0	0	0	0	1	11	8	20	44
	F	0	0	0	0	1	11	12	24	
11	M	0	0	0	0	0	3	12	15	33
	F	0	0	0	0	0	5	13	18	
12	M	0	0	0	0	0	0	2	2	4
	F	0	0	0	0	0	0	2	2	
13	M	0	0	0	0	0	0	0	0	0
	F	0	0	0	0	0	0	0	0	
Total	M	28	16	29	19	24	24	22	162	341
	F	30	24	25	22	28	23	27	179	
<b>Total</b>		<b>58</b>	<b>40</b>	<b>54</b>	<b>41</b>	<b>52</b>	<b>47</b>	<b>49</b>	<b>341</b>	

Source: Ministry of Education/ Statistics Department, Ministry of Finance & Economic Management (MoFEM), MONTSERRAT



Table 14.15 – Secondary School Enrolment by Form, Age and Sex 2019 – 2020

Age at Oct 15, 2019	Sex	Form					Total	Total
		1	2	3	4	5		
<11	M	0	0	0	0	0	0	0
	F	0	0	0	0	0	0	
11	M	14	0	0	0	0	14	23
	F	9	0	0	0	0	9	
12	M	16	11	0	0	0	27	54
	F	11	16	0	0	0	27	
13	M	4	16	6	0	0	26	52
	F	1	14	10	1	0	26	
14	M	0	3	26	18	0	47	88
	F	0	1	26	14	0	41	
15	M	0	0	2	12	6	20	54
	F	0	0	0	19	15	34	
16	M	0	0	0	6	18	24	36
	F	0	0	0	3	9	12	
17	M	0	0	0	0	3	3	3
	F	0	0	0	0	0	0	
18	M	0	0	0	0	0	0	0
	F	0	0	0	0	0	0	
Total	M	34	30	34	36	27	161	310
	F	21	31	36	37	24	149	
<b>Total</b>		<b>55</b>	<b>61</b>	<b>70</b>	<b>73</b>	<b>51</b>	<b>310</b>	

Source: Ministry of Education

Table 14.16 – Secondary School Enrolment by Form, Age and Sex 2020 – 2021

Age at Oct 15, 2020	Sex	Form					Total	
		1	2	3	4	5		
<11	M	0	0	0	0	0	0	<b>0</b>
	F	0	0	0	0	0	0	
11	M	10	0	0	0	0	10	<b>29</b>
	F	19	0	0	0	0	19	
12	M	17	14	0	0	0	31	<b>64</b>
	F	24	9	0	0	0	33	
13	M	2	16	11	0	0	29	<b>56</b>
	F	0	11	16	0	0	27	
14	M	0	4	16	6		26	<b>52</b>
	F	0	1	14	10	1	26	
15	M	0	0	3	26	10	39	<b>77</b>
	F	0	0	1	26	11	38	
16	M	0	0	1	2	8	11	<b>30</b>
	F	0	0	0	0	19	19	
17	M	0	0	0	0	2	2	<b>5</b>
	F	0	0	0	0	3	3	
18	M	0	0	0	0	1	1	<b>1</b>
	F	0	0	0	0	0	0	
Total	M	29	34	31	34	19	149	<b>314</b>
	F	43	21	31	36	31	165	
<b>Total</b>		<b>72</b>	<b>55</b>	<b>62</b>	<b>70</b>	<b>50</b>	<b>314</b>	

Source: Ministry of Education

Table 14.17 – Secondary School Enrolment by Form, Age and Sex 2021 – 2022

Age at Oct 15, 2021	Sex	Forms					Total	
		1	2	3	4	5		
<11	M	0	0	0	0	0	0	0
	F	0	0	0	0	0	0	
11	M	7	0	0	0	0	7	17
	F	10	0	0	0	0	10	
12	M	15	9	0	0	0	24	63
	F	14	25	0	0	0	39	
13	M	7	16	14	0	0	37	63
	F	3	16	7	0	0	26	
14	M	0	2	13	11	0	26	52
	F	0	0	11	15	0	26	
15	M	0	0	5	13	5	23	49
	F	0	0	1	14	11	26	
16	M	0	0	0	4	20	24	52
	F	0	0	0	2	26	28	
17	M	0	0	0	0	1	1	2
	F	0	0	0	1	0	1	
18	M	0	0	0	0	0	0	0
	F	0	0	0	0	0	0	
Total	M	29	27	32	28	25	142	298
	F	27	41	19	31	37	156	
<b>Total</b>		<b>56</b>	<b>68</b>	<b>51</b>	<b>59</b>	<b>62</b>	<b>298</b>	

Source: Ministry of Education

Table 14.18 – Secondary School Enrolment by Form, Age and Sex 2022 – 2023

Age at Oct 15, 2022	Sex	Forms					Total	
		1	2	3	4	5		
<11	M	1	0	0	0	0	1	<b>1</b>
	F	0	0	0	0	0	0	
11	M	10	0	0	0	0	10	<b>15</b>
	F	5	0	0	0	0	5	
12	M	13	5	0	0	0	18	<b>42</b>
	F	15	9	0	0	0	24	
13	M	5	16	1	0	0	22	<b>59</b>
	F	13	14	10	0	0	37	
14	M	0	7	20	13	0	40	<b>70</b>
	F	0	4	21	5	0	30	
15	M	0	0	6	15	11	32	<b>68</b>
	F	0	0	12	9	15	36	
16	M	0	0	1	5	12	18	<b>32</b>
	F	0	0	0	2	12	14	
17	M	0	0	0	0	4	4	<b>6</b>
	F	0	0	0	0	2	2	
18	M	0	0	0	0	0	0	<b>1</b>
	F	0	0	0	0	1	1	
Total	M	29	28	28	33	23	145	<b>294</b>
	F	33	27	43	16	28	149	
<b>Total</b>		<b>62</b>	<b>55</b>	<b>71</b>	<b>49</b>	<b>51</b>	<b>294</b>	

Source: Ministry of Education

Table 14.19 – Community College Enrolment by Year, Age and Sex 2019 – 2020

Age at Oct 15, 2019	Sex	Year 1	Year 2	Total	
16	M	1	0	1	4
	F	3	0	3	
17	M	4	5	9	18
	F	7	2	9	
18	M	0	1	1	8
	F	1	6	7	
19	M	0	0	0	0
	F	0	0	0	
20+	M	0	0	0	0
	F	0	0	0	
Total	M	5	6	11	30
	F	11	8	19	
<b>Total</b>		<b>16</b>	<b>14</b>	<b>30</b>	

Source: Montserrat Community College

Table 14.20 – Community College Enrolment by Year, Age and Sex 2020 – 2021

Age at Oct 15, 2020	Sex	Year 1	Year 2	Year 3	Total	
16	M	0	0	0	0	1
	F	1	0	0	1	
17	M	0	0	0	0	0
	F	0	0	0	0	
18	M	0	0	0	0	0
	F	0	0	0	0	
19	M	6	0	0	6	13
	F	7	0	0	7	
20+	M	7	11	11	29	62
	F	13	10	10	33	
Total	M	13	11	11	35	76
	F	21	10	10	41	
<b>Total</b>		<b>34</b>	<b>21</b>	<b>21</b>	<b>76</b>	

Source: Montserrat Community College

Table 14.21 – Community College Enrolment by Year, Age and Sex 2021 – 2022

Age at Oct 15, 2020	Sex	Year 1	Year 2	Year 3	Total	
16	M	6	0	0	6	11
	F	5	0	0	5	
17	M	5	2	0	7	20
	F	4	9	0	13	
18	M	1	3	0	4	7
	F	0	3	0	3	
19	M	0	1	0	1	3
	F	0	0	2	2	
20+	M	0	0	0	0	0
	F	0	0	0	0	
Total	M	12	6	0	18	41
	F	9	12	2	23	
<b>Total</b>		<b>21</b>	<b>18</b>	<b>2</b>	<b>41</b>	

Source: Montserrat Community College

Table 14.22 – Community College Enrolment by Year, Age and Sex 2022 – 2023

Age at Oct 15, 2020	Sex	Year 1	Year 2	Year 3	Total	
16	M	0	0	0	0	4
	F	4	0	0	4	
17	M	0	2	0	2	11
	F	4	5	0	9	
18	M	0	4	0	4	10
	F	1	5	0	6	
19	M	0	0	1	1	2
	F	0	0	1	1	
20+	M	0	0	0	0	0
	F	0	0	0	0	
Total	M	0	6	1	7	27
	F	9	10	1	20	
<b>Total</b>		<b>9</b>	<b>16</b>	<b>2</b>	<b>27</b>	

Source: Montserrat Community College

Table 14.23 – CSEC Subject Entries and Passes – 2019 &amp; 2020 (Secondary School)

Subject Category	2019			2020		
	Entries	Passes	Pass Rate (%)	Entries	Passes	Pass Rate (%)
<b>Languages</b>	<b>71</b>	<b>28</b>	<b>39.44</b>	<b>71</b>	<b>67</b>	<b>94.37</b>
English A	53	17	32.08	47	44	93.62
English B (Literature)	0	0	0.00	1	0	0.00
French	4	3	75.00	10	10	100.00
Spanish	14	8	57.14	13	13	100.00
<b>Mathematics</b>	<b>50</b>	<b>22</b>	<b>44.00</b>	<b>47</b>	<b>31</b>	<b>65.96</b>
<b>Science</b>	<b>78</b>	<b>57</b>	<b>73.08</b>	<b>81</b>	<b>73</b>	<b>90.12</b>
Agricultural Science	10	9	90.00	13	12	92.31
Biology	8	5	62.50	13	13	100.00
Chemistry	17	15	88.24	15	15	100.00
Human and Social Biology	2	2	100.00	0	0	0.00
Integrated Science	30	16	53.33	26	19	73.08
Physics	11	10	90.91	14	14	100.00
<b>Social Sciences</b>	<b>30</b>	<b>19</b>	<b>63.33</b>	<b>37</b>	<b>32</b>	<b>86.49</b>
Caribbean History	0	0	0.00	1	1	100.00
Geography	2	2	100.00	6	6	100.00
Social Studies	28	17	60.71	30	25	83.33
<b>Business Studies</b>	<b>63</b>	<b>55</b>	<b>87.30</b>	<b>47</b>	<b>47</b>	<b>100.00</b>
Electronic Document Preparation and Management	24	21	87.50	25	25	100.00
Office Administration	8	8	100.00	6	6	100.00
Principles of Accounts	2	2	100.00	3	3	100.00
Principles of Business	8	8	100.00	-	-	-
Information Technology	20	15	75.00	13	13	100.00
Economics	1	1	100.00	0	0	0.00
<b>Technical Studies</b>	<b>0</b>	<b>0</b>	<b>0.00</b>	<b>0</b>	<b>0</b>	<b>0.00</b>
Electricity	0	0	0.00	0	0	0.00
Technical Drawing	0	0	0.00	0	0	0.00
Building Technology (Woodwork)	0	0	0.00	0	0	0.00
<b>Home Economics</b>	<b>0</b>	<b>0</b>	<b>0.00</b>	<b>0</b>	<b>0</b>	<b>0.00</b>
Food and Nutrition	0	0	0.00	0	0	0.00
Clothing and Textiles			0.00	0	0	0.00
<b>Other</b>	<b>32</b>	<b>32</b>	<b>100.00</b>	<b>0</b>	<b>0</b>	<b>0.00</b>
Theatre Arts	0	0	0.00	0	0	0.00
Visual Arts	0	0	0.00	0	0	0.00
Music	0	0	0.00	0	0	0.00
Physical Education	32	32	100.00	30	30	100.00
<b>Total</b>	<b>324</b>	<b>213</b>	<b>65.74</b>	<b>283</b>	<b>250</b>	<b>88.34</b>

Source: Ministry of Education

Table 14.24 – CSEC Subject Entries and Passes – 2021 &amp; 2022 (Secondary School)

Subject Category	2021			2022		
	Entries	Passes	Pass Rate (%)	Entries	Passes	Pass Rate (%)
<b>Languages</b>	<b>74</b>	<b>63</b>	<b>85.14</b>	<b>80</b>	<b>69</b>	<b>86.25</b>
English A	55	44	80.00	54	49	90.74
English B (Literature)	0	0	0.00	2	1	50.00
French	8	8	100.00	4	4	100.00
Spanish	11	11	100.00	20	15	75.00
<b>Mathematics</b>	<b>55</b>	<b>31</b>	<b>56.36</b>	<b>57</b>	<b>20</b>	<b>35.09</b>
<b>Science</b>	<b>94</b>	<b>79</b>	<b>84.04</b>	<b>61</b>	<b>50</b>	<b>81.97</b>
Agricultural Science	16	16	100.00	2	2	100.00
Biology	8	8	100.00	2	2	100.00
Chemistry	25	17	68.00	8	7	87.50
Human and Social Biology	1	0	0.00	1	1	100.00
Integrated Science	25	22	88.00	40	31	77.50
Physics	19	16	84.21	8	7	87.50
<b>Social Sciences</b>	<b>56</b>	<b>50</b>	<b>89.29</b>	<b>49</b>	<b>35</b>	<b>71.43</b>
Caribbean History	3	3	100.00	5	5	100.00
Geography	10	9	90.00	6	6	100.00
Social Studies	43	38	88.37	38	24	63.16
<b>Business Studies</b>	<b>42</b>	<b>38</b>	<b>90.48</b>	<b>105</b>	<b>98</b>	<b>93.33</b>
Electronic Document Preparation and Management	7	3	42.86	29	26	89.66
Office Administration	18	18	100.00	11	11	100.00
Principles of Accounts	0	0	0.00	15	15	100.00
Principles of Business	0	0	0.00	26	24	92.31
Information Technology	17	17	100.00	24	22	91.67
<b>Technical Studies</b>	<b>14</b>	<b>14</b>	<b>100.00</b>	<b>14</b>	<b>14</b>	<b>100.00</b>
Electricity	0	0	0.00	5	5	0.00
Technical Drawing	10	10	100.00	2	2	100.00
Building Technology (Woodwork)	4	4	100.00	7	7	100.00
<b>Home Economics</b>	<b>5</b>	<b>5</b>	<b>100.00</b>	<b>16</b>	<b>16</b>	<b>100.00</b>
Food and Nutrition	5	5	100.00	16	16	100.00
Clothing and Textiles	0	0	0.00	0	0	0.00
<b>Other</b>	<b>32</b>	<b>32</b>	<b>100.00</b>	<b>39</b>	<b>39</b>	<b>100.00</b>
Theatre Arts	2	2	0.00	0	0	0.00
Visual Arts	0	0	0.00	1	1	100.00
Music	0	0	0.00	2	2	100.00
Physical Education	30	30	100.00	36	36	100.00
<b>Total</b>	<b>372</b>	<b>312</b>	<b>83.87</b>	<b>421</b>	<b>341</b>	<b>81.00</b>

Source: Ministry of Education



## Electoral Statistics

Table 15.1 – Elections Results by Polling Divisions 2019

RANK	CANDIDATES	PARTY	Total	Div1	Div2	Div3	Div4	Div5	Div6	% of GOOD BLTS	% of VOTES
1	BUFFONGE Crenston	MCP	1378	219	194	257	211	232	265	58.3%	6.9%
2	LEWIS Paul	PDM	1251	219	183	268	208	212	161	52.9%	6.3%
3	FARRELL Joseph	MCP	1210	187	159	245	165	201	253	51.2%	6.1%
4	ROMEO Donaldson	IND	1060	208	156	210	185	167	134	44.8%	5.3%
5	DORSETTE-HECTOR Veronica	MCP	1007	183	133	186	141	175	189	42.6%	5.0%
6	JOSEPH Samuel	MCP	998	175	148	196	128	163	188	42.2%	5.0%
7	KIRNON Charles	MCP	970	179	133	214	115	159	170	41.0%	4.9%
8	OSBORNE David	PDM	947	197	146	186	159	146	113	40.1%	4.7%
9	HOGAN Claude	PDM	873	157	134	179	154	133	116	36.9%	4.4%
10	HIXON Dwayne	PDM	862	184	121	186	135	131	105	36.5%	4.3%
11	BUFFONGE Ingrid	IND	861	155	132	169	133	138	134	36.4%	4.3%
12	SKERRITT Jenzil	MCP	854	152	119	163	111	148	161	36.1%	4.3%
13	PHILLIP Charlesworth	MCP	822	130	109	152	124	136	171	34.8%	4.1%
14	CASSELL-SEALY Roselyn	MCP	722	141	99	129	97	122	134	30.5%	3.6%
15	DUBERRY Emile	PDM	698	140	91	146	129	111	81	29.5%	3.5%
16	RYAN Delmaude	PDM	687	125	100	152	112	116	82	29.1%	3.4%
17	DUBERRY David	PDM	651	134	89	132	111	104	81	27.5%	3.3%
18	CASSELL Norman	MCP	550	113	64	111	61	104	97	23.3%	2.8%
19	QUEELEY Peter	MLP	482	92	71	76	85	81	77	20.4%	2.4%
20	WILLOCK Gregory	MNC	405	69	50	76	97	61	52	17.1%	2.0%
21	LEWIS Lowell	MNC	327	55	46	79	49	40	58	13.8%	1.6%
22	JAMES Victor	IND	308	44	37	44	64	54	65	13.0%	1.5%
23	OSBORNE Shirley	IND	253	50	67	53	30	29	24	10.7%	1.3%
24	WADE Jermaine	MLP	244	39	51	39	37	29	49	10.3%	1.2%
25	WADE Veta	IND	233	65	40	38	32	23	35	9.9%	1.2%
26	GREAVES Franklyn	MLP	204	77	29	28	30	15	25	8.6%	1.0%
26	LEE Bertram	MLP	204	36	22	32	29	20	65	8.6%	1.0%
28	GERALD Alvin	IND	196	35	21	36	48	41	15	8.3%	1.0%
29	SILCOTT-GREAVES Eulya	IND	142	50	19	26	17	11	19	6.0%	0.7%
30	ALLEN Karen	IND	120	17	19	17	30	18	19	5.1%	0.6%
31	LINDESAY Dunstan	IND	98	14	26	23	11	6	18	4.1%	0.5%
32	BROWNE Chedmond	MNC	96	22	20	19	15	11	9	4.1%	0.5%
33	MORSON Keithroy	MLP	93	9	12	14	24	8	26	3.9%	0.5%
34	FRANCIS Glenn	IND	92	19	14	11	16	16	16	3.9%	0.5%
35	MEADE Wilford	IND	51	10	11	6	6	4	14	2.2%	0.3%
<b>Total</b>			<b>19,949</b>	<b>3,701</b>	<b>2,865</b>	<b>3,898</b>	<b>3,099</b>	<b>3,165</b>	<b>3,221</b>		<b>100%</b>

Source: Legislature Department

Table 15.2 – Ballot Cast by Polling Divisions 2019

Ballots	Div1	Div2	Div3	Div4	Div5	Div6	Total	%
Good Ballots Cast	442	345	460	365	370	382	2364	98.1%
Rejected Ballots	8	5	7	11	7	8	46	1.9%
<b>Total Ballots Cast</b>	<b>450</b>	<b>350</b>	<b>467</b>	<b>376</b>	<b>377</b>	<b>390</b>	<b>2410</b>	<b>100.0%</b>

Source: Legislature Department

Table 15.3 – Registered Voters Turn out by Division 2019

DIVISIONS	Div1	Div2	Div3	Div4	Div5	Div6	Total
Registered Voters	674	516	765	667	625	611	3858
Voter Turn-out	450	350	467	376	377	390	2410
Ballots Counted	450	350	467	376	377	390	2410
Ballot-Count %	100%	100%	100%	100%	100%	100%	100%

Source: Legislature Department

Table 15.4 – Voters by Party by Polling Divisions

PARTY	Total Votes	VOTES per DIVISION						% of VOTE S
		Salem	St Peters	Cudjoe Head	Davy Hill	St. John	Look Out	
MCP	8,511	1,479	1,158	1,653	1,153	1,440	1,628	42.7%
PDM	5,969	1,156	864	1,249	1,008	953	739	29.9%
MLP	1,227	253	185	189	205	153	242	6.2%
MNC	828	146	116	174	161	112	119	4.2%
IND	3,414	667	542	633	572	507	493	17.1%
<b>TOTAL</b>	<b>19,949</b>	<b>3,701</b>	<b>2,865</b>	<b>3,898</b>	<b>3,099</b>	<b>3,165</b>	<b>3,221</b>	<b>100.0%</b>

Source: Legislature Department

Table 15.5 – Voters by Party by Polling Divisions and Box Count

PARTY	Total Votes	DIV1-Salem		DIV2-St Peter		DIV3-Cudjoe Head		DIV4-Dav Hill		DIV5-St. John		DIV6-Look Out		% of VOTES
		Box1	Box2	Box3	Box4	Box5	Box6	Box7	Box8	Box9	Box10	Box11	Box12	
MCP	8,511	790	689	553	605	888	765	626	527	653	787	817	811	42.7%
PDM	5,969	640	516	424	440	640	609	525	483	485	468	356	383	29.9%
MLP	1,227	128	125	84	101	81	108	100	105	79	74	118	124	6.2%
MNC	828	78	68	40	76	104	70	76	85	59	53	80	39	4.2%
IND	3,414	329	338	241	301	330	303	294	278	249	258	263	230	17.1%
<b>Total</b>	<b>19,949</b>	<b>1,965</b>	<b>1,736</b>	<b>1,342</b>	<b>1,523</b>	<b>2,043</b>	<b>1,855</b>	<b>1,621</b>	<b>1,478</b>	<b>1,525</b>	<b>1,640</b>	<b>1,634</b>	<b>1,587</b>	<b>100.0%</b>

Source: Legislature Department

Table 15.6 – Voter Turnout by District by Box Count

DIVISIONS	DIV1-Salem		DIV2-St Peter		DIV3-Cudjoe Head		DIV4-Dav Hill		DIV5-St. John		DIV6-Look Out		Total
	Box1	Box2	Box3	Box4	Box5	Box6	Box7	Box8	Box9	Box10	Box11	Box12	
Registered Voters	346	328	255	261	399	366	346	321	310	315	308	303	3858
Voter Turn-out	238	212	160	190	243	224	194	182	186	191	191	199	2410
Voter Turn-out%	0.69	0.65	0.63	0.73	0.61	0.61	0.56	0.57	0.6	0.61	0.62	0.66	0.62
Ballots Counted	238	212	160	190	243	224	194	182	186	191	191	199	2410
Ballot-Count %	100%	100%	100%	100%	100%	100%	100%	100%	100%	100%	100%	100%	100%

Source: Legislature Department

## Public Order

Table 16.1 – Yearly Comparative Return of Crime 2019 – 2022

Offences	2019	2020	2021	2022
Murder	0	0	0	0
Manslaughter	0	0	0	0
Attempted Murder	0	0	0	0
Wounding	9	5	8	3
Assault	71	58	40	45
Sexual Offences/Rape	6	5	3	2
Domestic Violence	7	7	10	7
Robbery	0	0	0	3
Burglary	31	14	10	29
Attempted Burglary	7	7	2	10
Theft	38	24	22	19
Offences Under Criminal Damage - Excluding Arson - Indictable	14	2	0	5
Arson	0	0	2	1
Dangerous Drugs	48	33	10	12
Breach of Quarantine	0	106	35	14
Minor Offences and Contraventions not already Enumerated	677	663	635	748

Source: Royal Montserrat Police Service (RMPS)

Table 16.2 – Prison Committals by Age Range 2019 – 2022

Age Range	2019		2020		2021		2022	
	Convicted	Remanded	Convicted	Remanded	Convicted	Remanded	Convicted	Remanded
Under 30	<5	20	6	<5	<5	5	5	6
30 - 49	<5	8	<5	7	<5	<5	<5	5
50+	<5	<5	0	<5	<5	<5	<5	<5
<b>Total</b>	<b>9</b>	<b>30</b>	<b>9</b>	<b>13</b>	<b>7</b>	<b>8</b>	<b>8</b>	<b>14</b>

Source: His Majesty's Prison, Montserrat

## Miscellaneous

Table 17.1 – Quarterly Money Services Businesses Statistics for 2019 (in EC\$'000)

Received Activity Information	March 2019		June 2019		September 2019		December 2019		Aggregate No. of Transactions	Aggregate Amount EC\$
	No. of Transactions	Amount EC\$	No. of Transactions	Amount EC\$	No. of Transactions	Amount EC\$	No. of Transactions	Amount EC\$		
ECCU Region	431	267	351	200	353	232	403	255	1,538	954
Non-ECCU/Non-CARICOM	86	42	88	58	82	67	70	42	326	209
Non-ECCU/CARICOM	1,828	1,656	1,919	1,638	1,864	1,519	2,050	1,665	7,661	6,479
<b>Total Receiving Information</b>	<b>2,345</b>	<b>1,966</b>	<b>2,358</b>	<b>1,896</b>	<b>2,299</b>	<b>1,818</b>	<b>2,523</b>	<b>1,962</b>	<b>9,525</b>	<b>7,641</b>
<b>Sending Activity Information</b>										
ECCU Region	657	393	678	413	733	418	750	489	2,818	1,713
Non-ECCU/Non-CARICOM	1,609	720	1,703	730	1,704	761	1,781	774	6,797	2,985
Non-ECCU/CARICOM	1,760	1,234	1,930	1,344	1,974	1,354	2,062	1,469	7,726	5,401
<b>Total Sending Information</b>	<b>4,026</b>	<b>2,347</b>	<b>4,311</b>	<b>2,486</b>	<b>4,411</b>	<b>2,532</b>	<b>4,593</b>	<b>2,733</b>	<b>17,341</b>	<b>10,099</b>

Source: Financial Service Commission

Table 17.2 – Quarterly Money Services Businesses Statistics for 2020 (in EC\$'000)

Received Activity Information	March 2020		June 2020		September 2020		December 2020		Aggregate No. of Transactions	Aggregate Amount EC\$
	No. of Transactions	Amount EC\$	No. of Transactions	Amount EC\$	No. of Transactions	Amount EC\$	No. of Transactions	Amount EC\$		
ECCU Region	328	186	165	109	183	122	262	157	938	573
Non-ECCU/Non-CARICOM	1,938	4,732	1,948	1,691	2,560	2,269	2,792	2,386	9,238	11,078
Non-ECCU/CARICOM	517	77	47	42	220	74	88	71	872	263
<b>Total Receiving Information</b>	<b>2,783</b>	<b>4,995</b>	<b>2,160</b>	<b>1,841</b>	<b>2,963</b>	<b>2,464</b>	<b>3,142</b>	<b>2,614</b>	<b>11,048</b>	<b>11,914</b>
<b>Sending Activity Information</b>										
ECCU Region	703	393	597	406	903	572	982	629	3,185	2,000
Non-ECCU/Non-CARICOM	1,506	831	1,248	9,930	1,527	885	1,605	1,135	5,886	12,780
Non-ECCU/CARICOM	1,984	1,115	1,205	2,419	1,965	1,133	1,944	1,153	7,098	5,820
<b>Total Sending Information</b>	<b>4,193</b>	<b>2,340</b>	<b>3,050</b>	<b>12,755</b>	<b>4,395</b>	<b>2,590</b>	<b>4,531</b>	<b>2,916</b>	<b>16,169</b>	<b>20,600</b>

Source: Financial Service Commission

Table 17.3 – Quarterly Money Services Businesses Statistics for 2021 (in EC\$'000)

Received Activity Information	March 2021		June 2021		September 2021		December 2021		Aggregate No. of Transactions	Aggregate Amount EC\$
	No. of Transactions	Amount EC\$	No. of Transactions	Amount EC\$	No. of Transactions	Amount EC\$	No. of Transactions	Amount EC\$		
ECCU Region	193	123	172	127	187	117	204	125	756	492
Non-ECCU/Non-CARICOM	2,332	2,082	2,892	2,919	2,856	2,863	3,008	2,694	11,088	10,557
Non-ECCU/CARICOM	50	38	57	36	54	34	82	59	243	166
<b>Total Receiving Information</b>	<b>2,575</b>	<b>2,243</b>	<b>3,121</b>	<b>3,081</b>	<b>3,097</b>	<b>3,014</b>	<b>3,294</b>	<b>2,877</b>	<b>12,087</b>	<b>11,216</b>
<b>Sending Activity Information</b>										
ECCU Region	748	512	899	617	902	642	865	1,219	3,414	2,990
Non-ECCU/Non-CARICOM	1,580	1,228	2,151	1,766	2,190	1,741	2,265	1,848	8,186	6,583
Non-ECCU/CARICOM	1,243	666	1,642	841	1,447	816	1,426	762	5,758	3,085
<b>Total Sending Information</b>	<b>3,571</b>	<b>2,406</b>	<b>4,692</b>	<b>3,224</b>	<b>4,539</b>	<b>3,199</b>	<b>4,556</b>	<b>3,829</b>	<b>17,358</b>	<b>12,658</b>

Source: Financial Service Commission

Table 17.4 – Quarterly Money Services Businesses Statistics for 2022 (in EC\$'000)

Received Activity Information	March 2022		June 2022		September 2022		December 2022		Aggregate No. of Transactions	Aggregate Amount EC\$
	No. of Transactions	Amount EC\$	No. of Transactions	Amount EC\$	No. of Transactions	Amount EC\$	No. of Transactions	Amount EC\$		
ECCU Region	167	126	191	122	185	111	207	139	750	497
Non-ECCU/CARICOM	63	53	94	77	70	61	90	70	317	260
Non-ECCU/Non-CARICOM	2,637	2,717	2,630	2,558	2,557	2,475	2,800	2,942	10,624	10,691
<b>Total Receiving Information</b>	<b>2,867</b>	<b>2,895</b>	<b>2,915</b>	<b>2,757</b>	<b>2,812</b>	<b>2,646</b>	<b>3,097</b>	<b>3,150</b>	<b>11,691</b>	<b>11,449</b>
<b>Sending Activity Information</b>										
ECCU Region	741	489	689	458	652	442	828	559	2,910	1,948
Non-ECCU/CARICOM	1,436	725	1,428	750	1,335	705	1,583	942	5,782	3,122
Non-ECCU/Non-CARICOM	1,570	1,391	1,506	1,250	1,462	1,223	1,804	1,253	6,342	5,117
<b>Total Sending Information</b>	<b>3,747</b>	<b>2,605</b>	<b>3,623</b>	<b>2,459</b>	<b>3,449</b>	<b>2,369</b>	<b>4,215</b>	<b>2,754</b>	<b>15,034</b>	<b>10,187</b>

Source: Financial Service Commission



Table 17.5 – Fuel Surcharge (monthly) 2019 – 2022

Month	2019	2020	2021	2022
January	0.59	0.65	0.47	0.74
February	0.57	0.60	0.51	0.70
March	0.52	0.56	0.43	0.65
April	0.73	0.50	0.51	0.9
May	0.56	0.36	0.59	0.92
June	0.70	0.46	0.64	1.11
July	0.64	0.36	0.56	0.96
August	0.66	0.47	0.64	1.19
September	0.66	0.45	0.61	1.04
October	0.58	0.43	0.59	0.94
November	0.62	0.47	0.69	1.04
December	0.64	0.43	0.70	0.91

Source: Montserrat Utilities Limited, Electricity Division

Table 17.6 – Average Fuel Price – Gasoline and Diesel 2019 – 2022

Month	Premium Gasoline				Diesel			
	2019	2020	2021	2022	2019	2020	2021	2022
January	12.82	14.90	13.87	17.46	11.61	12.44	10.83	13.69
February	12.84	14.51	15.20	18.64	11.53	12.22	10.94	14.62
March	12.84	14.39	15.73	20.20	11.91	11.66	11.76	16.74
April	13.52	14.39	16.05	21.81	12.26	11.28	12.22	19.33
May	15.40	14.39	16.16	21.26	12.16	8.75	12.25	18.59
June	15.40	12.85	16.26	22.06	12.36	8.43	12.31	18.89
July	15.16	12.27	16.51	22.53	12.26	9.66	12.53	19.90
August	14.86	12.36	17.13	20.55	12.23	9.87	12.53	19.34
September	14.86	12.66	16.86	19.84	12.22	9.92	12.83	18.64
October	14.86	12.69	16.46	19.43	12.44	9.85	13.53	18.12
November	14.76	13.31	18.54	19.41	12.46	10.11	14.61	17.24
December	14.73	13.22	18.74	19.15	12.21	10.18	14.06	18.53

Source: Trade Division, average workings Prepared by Statistics Department, Ministry of Finance and Economic Management (MoFEM)

Table 17.7 – Grants and total number beneficiaries 2017 - 2022

Programme	2017	2018	2019	2020	2021	2022
Duty Free Concessions	3	2	3	4	6	4
Financial Assistance / Materials Grant	14	8	9	8	0	2
Home Improvement / Home Finishing	22	48	8	10	10	38
Residential Serviced Lot	2	4	0	13	0	0
<b>Total</b>	<b>41</b>	<b>62</b>	<b>20</b>	<b>35</b>	<b>16</b>	<b>44</b>

Source - Housing Division, Ministry of Agriculture, Lands, Housing & the Environment

Table 17.8 – Complaints to Montserrat Complaints Commission 2017 – 2022

Type of Complaints	2017	2018	2019	2020	2021	2022	Total
Maladministration only	2	2	0	2	3	1	10
Human Rights & Victimization	0	1	0	0	0	0	1
Bullying & Harassment	0	1	0	0	0	0	1
Human Rights & Maladministration	0	0	1	0	0	0	1
Human Rights & Maladministration & Victimization	0	0	0	0	1	0	1
Maladministration & Discrimination	0	0	0	0	1	0	1
Human Rights & Maladministration & Constitutional Rights Violation & Malfeasance	0	0	0	0	1	0	1
Maladministration & Making False Allegation	0	0	0	0	0	1	1
<b>Total</b>	<b>2</b>	<b>4</b>	<b>1</b>	<b>2</b>	<b>6</b>	<b>2</b>	<b>17</b>

Source - Constitution & Commissions Secretariat



Visit our Facebook page:

[www.facebook.com/statisticsdepartmentmontserrat/](http://www.facebook.com/statisticsdepartmentmontserrat/)

Visit our website:

[www.statistics.gov.ms](http://www.statistics.gov.ms)

Instagram:

[www.instagram.com/statistics\\_mni](http://www.instagram.com/statistics_mni)

Youtube:

<https://www.youtube.com/@statisticsdepartmentmni>

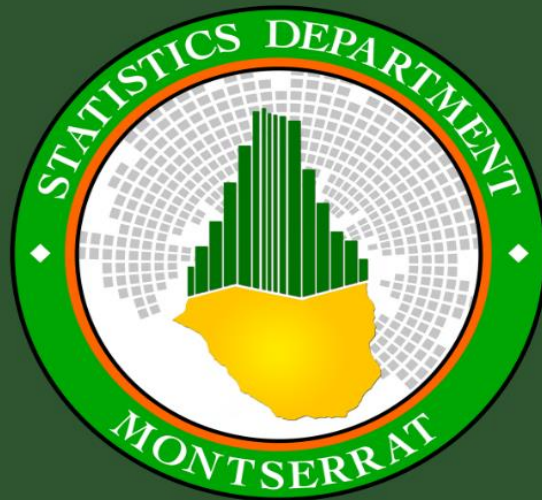
Email:

[statistics@gov.ms](mailto:statistics@gov.ms)

Call us:

+1(664) 491-3797(4)

+1(664) 495-3797



# Better Data, Better Lives

Telling Montserrat's Story Through Data